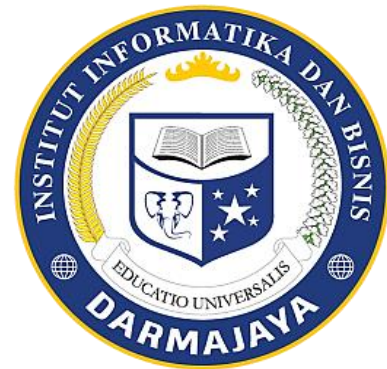


Bahan Ajar

Modul Praktikum

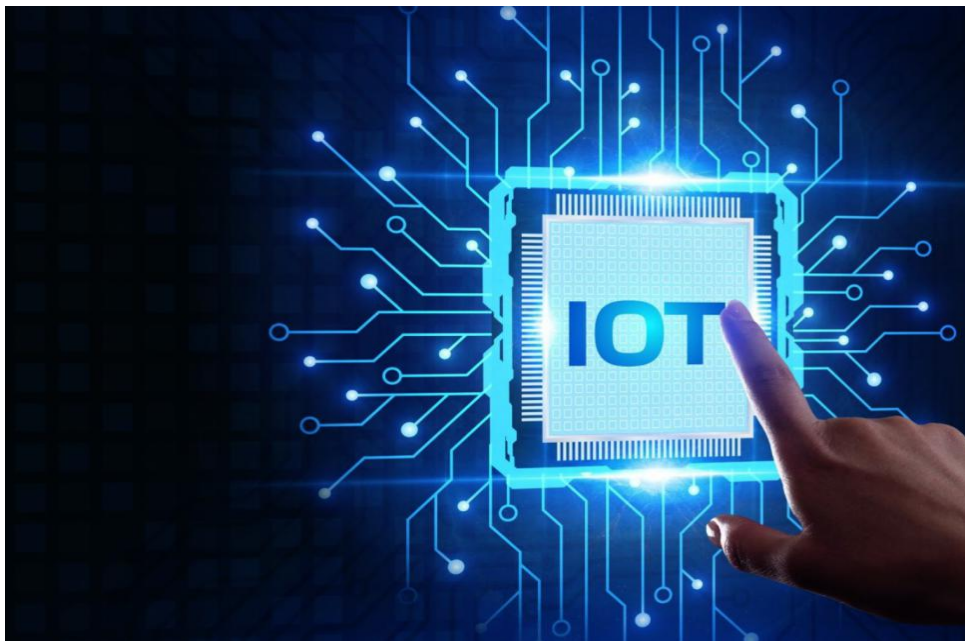
INTERNET of THINGS (IoT Security)

Kode Matakuliah: SKO21431



Penyusun:

Bayu Nugroho. S.Kom., M.Eng



**PROGRAM STUDI SISTEM KOMPUTER
FAKULTAS ILMU KOMPUTER
INSTITUT INFORMATIKA DAN BISNIS DARMAJAYA
2023**

DAFTAR ISI

Halaman Judul.....	1
DAFTAR ISI.....	2
Modul 1.....	4
Installation IoT Server (WMware).....	4
JOBSHEET 1.....	11
Modul 2.....	12
Installation IoT Server (Windows Server).....	12
JOBSHEET 2.....	21
Modul 3.....	22
Installation IoT Server (XAMPP).....	22
JOBSHEET 3.....	25
Modul 4.....	26
Wireshark Installation (Windows).....	26
JOBSHEET 4.....	36
Modul 5.....	37
Wireshark Installation (Linux).....	37
JOBSHEET 5.....	46
Modul 6.....	47
Wireshark Menu.....	47
JOBSHEET 6.....	52
Modul 7.....	54
Capturing Live Network Data (http Protocol).....	54
JOBSHEET 7.....	56

Modul 8.....	57
Ujian Tengah Semester (UTS).....	57
Modul 9.....	58
Capturing Live Network Data (tcp Protocol).....	58
JOBSHEET 9.....	58
Modul 10.....	59
Capturing Live Network Data (udp Protocol).....	59
JOBSHEET 10.....	59
Modul 11.....	60
Capturing Live Network Data (telnet Protocol).....	60
JOBSHEET 11.....	60
Modul 12.....	61
Capturing Live Network Data (ssh Protocol).....	61
JOBSHEET 12.....	61
Modul 13.....	62
Capturing Live Network Data (arp Protocol).....	62
JOBSHEET 13.....	62
Modul 14.....	63
IoT Controlling For Smart Home System.....	63
JOBSHEET 14.....	63
Modul 15.....	64
IoT Security For Smart Home System.....	64
JOBSHEET 15.....	64
Modul 16.....	65
Ujian Akhir Semester (UAS).....	65

Modul 1

Installation IoT Server (VMware)

INSTALLATION VMWARE

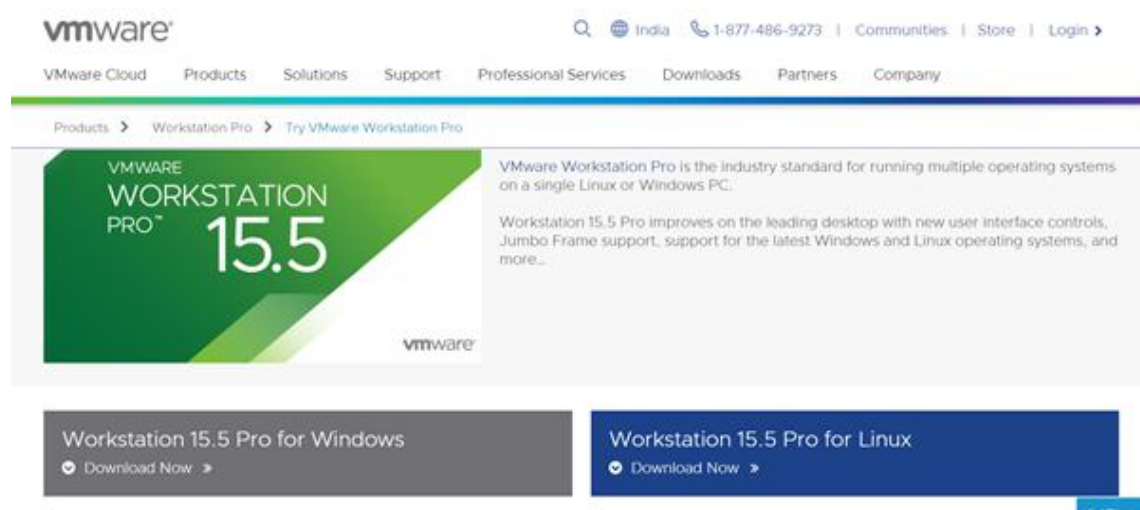
Introduction:

VMware develops virtualization Software. Virtualization software creates an abstraction layer over computer hardware that allows the hardware elements of a single computer — processors, memory, storage, and more — to be divided into multiple virtual computers, commonly called virtual machines (VMs). Each virtual machine runs its own operating system (OS) and behaves like an independent computer, even though it is running on a portion of the actual underlying computer hardware. A VM is a software-based representation of a physical computer. An operating system (OS) running in a VM is called a guest OS.

Let us start Setup and Installation :

1. Installing VMware Workstation from given below link. There are two options for downloading one is Windows and other for Linux. My Base Operating System is Windows8, So I choose for VMware for Windows. If Your Base OS is Linux go and choose VMware for Linux Link.

<https://www.vmware.com/in/products/workstation-pro/workstation-pro-evaluation.html>



vmware®

India | 1-877-486-9273 | Communities | Store | Login

VMware Cloud | Products | Solutions | Support | Professional Services | Downloads | Partners | Company

Products > Workstation Pro > Try VMware Workstation Pro

VMWARE
WORKSTATION
PRO™
15.5
vmware

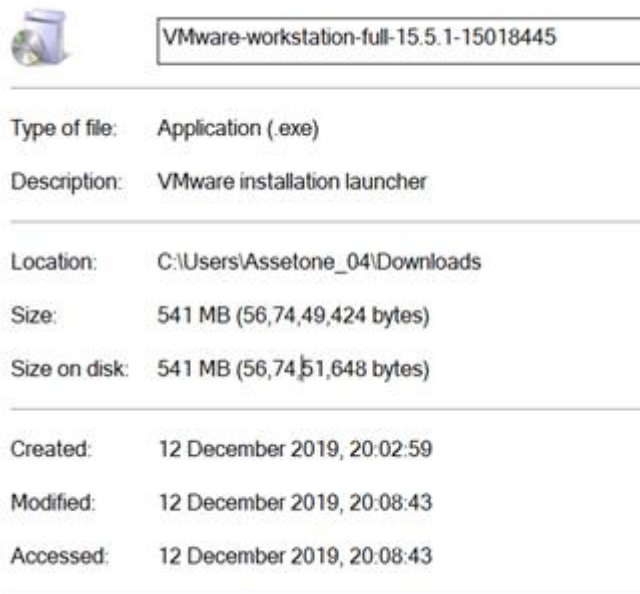
VMware Workstation Pro is the industry standard for running multiple operating systems on a single Linux or Windows PC.

Workstation 15.5 Pro improves on the leading desktop with new user interface controls, Jumbo Frame support, support for the latest Windows and Linux operating systems, and more...

Workstation 15.5 Pro for Windows
Download Now >

Workstation 15.5 Pro for Linux
Download Now >

2. Check your VMware Properties.



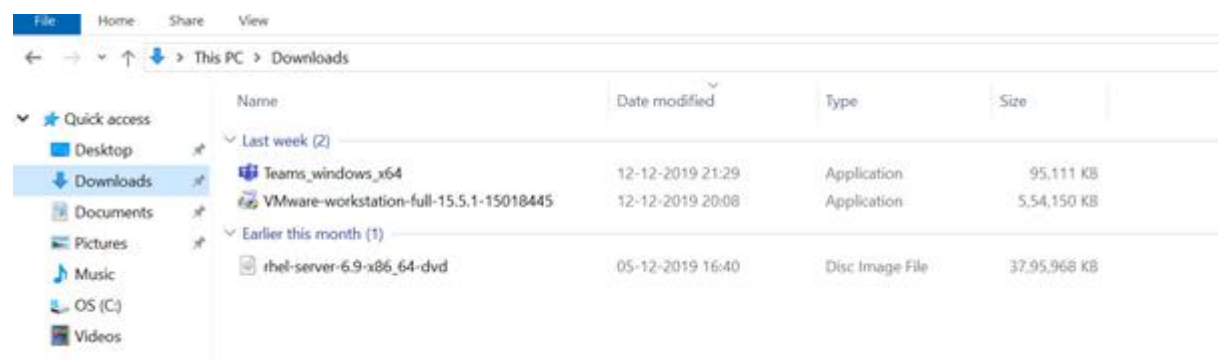
VMware-workstation-full-15.5.1-15018445

Type of file: Application (.exe)
Description: VMware installation launcher

Location: C:\Users\Assetone_04\Downloads
Size: 541 MB (56,74,49,424 bytes)
Size on disk: 541 MB (56,74,51,648 bytes)

Created: 12 December 2019, 20:02:59
Modified: 12 December 2019, 20:08:43
Accessed: 12 December 2019, 20:08:43

3. Go to Download Folder.

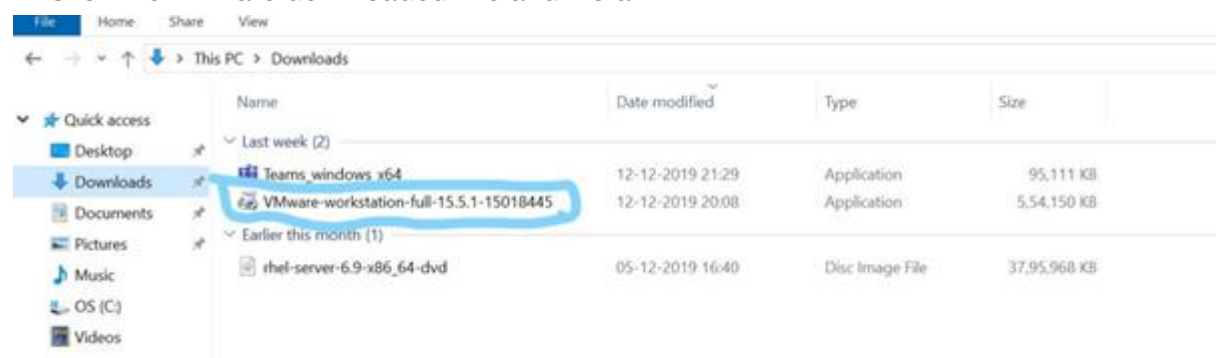


File Home Share View

← → ↶ ↷ ⬇ This PC > Downloads

Name	Date modified	Type	Size
Last week (2)			
Teams_windows_x64	12-12-2019 21:29	Application	95,111 KB
VMware-workstation-full-15.5.1-15018445	12-12-2019 20:08	Application	5,54,150 KB
Earlier this month (1)			
rhel-server-6.9-x86_64-dvd	05-12-2019 16:40	Disc Image File	37,95,968 KB

4. Click the VMware downloaded File and Install it.



File Home Share View

← → ↶ ↷ ⬇ This PC > Downloads

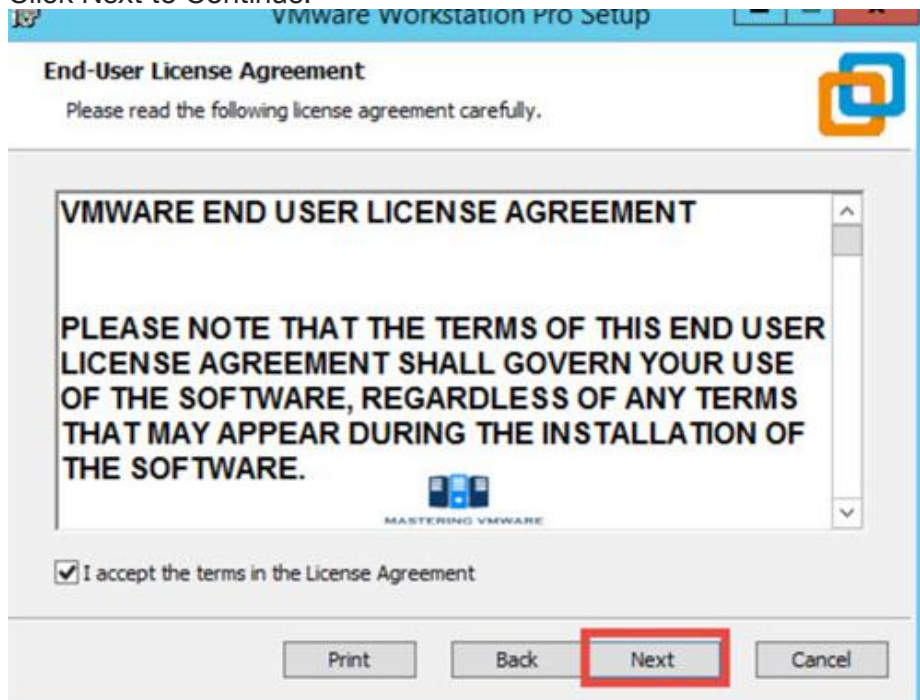
Name	Date modified	Type	Size
Last week (2)			
Teams_windows_x64	12-12-2019 21:29	Application	95,111 KB
VMware-workstation-full-15.5.1-15018445	12-12-2019 20:08	Application	5,54,150 KB
Earlier this month (1)			
rhel-server-6.9-x86_64-dvd	05-12-2019 16:40	Disc Image File	37,95,968 KB

5. Click on VMware Software and click and choose “Pin to Taskbar”.

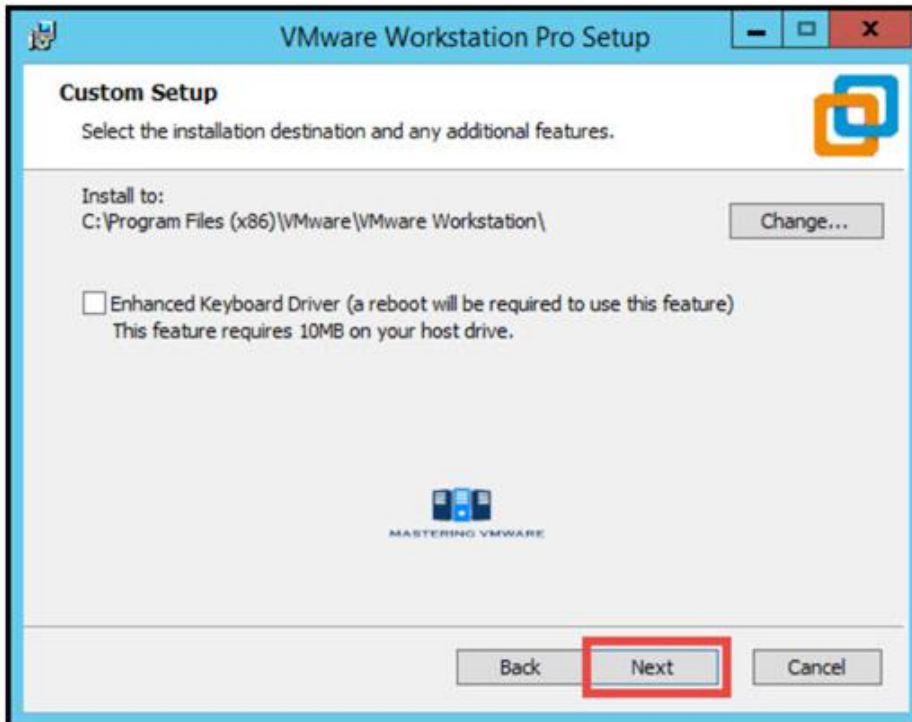
6. Click on VMware Software and Click on Next to the Installation wizard.



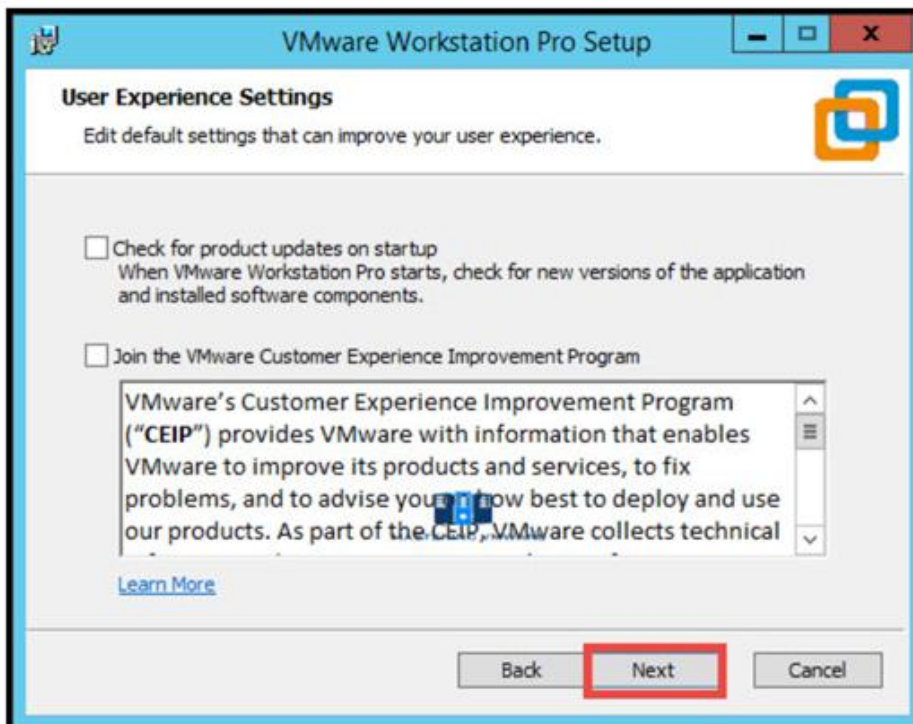
7. Read and Accept the VMware End User license agreement.
Click Next to Continue.



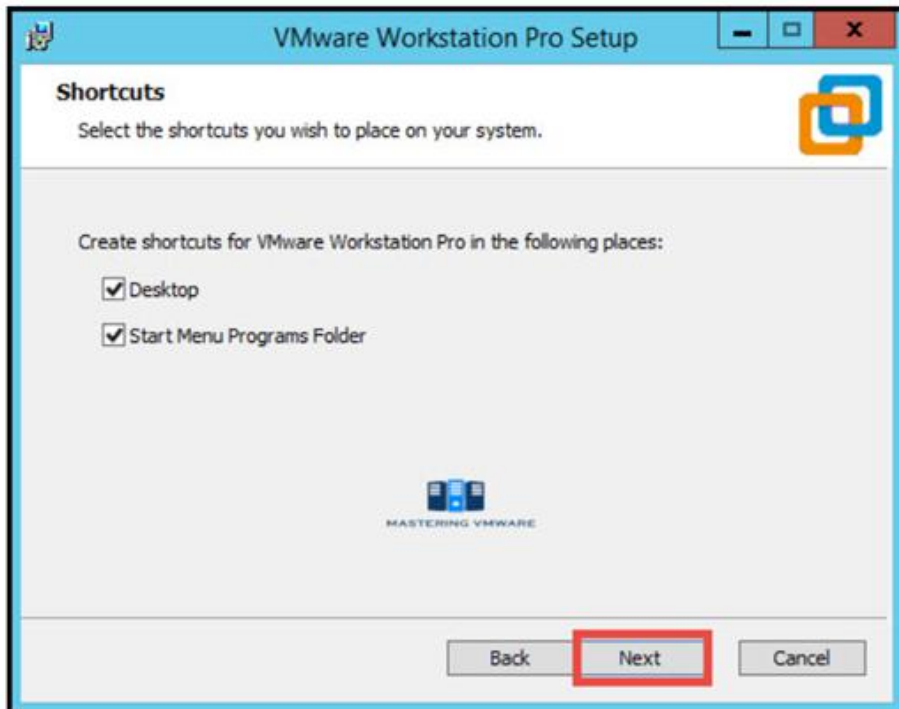
8. Specify the Installation directory. You can also enable Enhance keyboard driver here.
Click Next to continue.



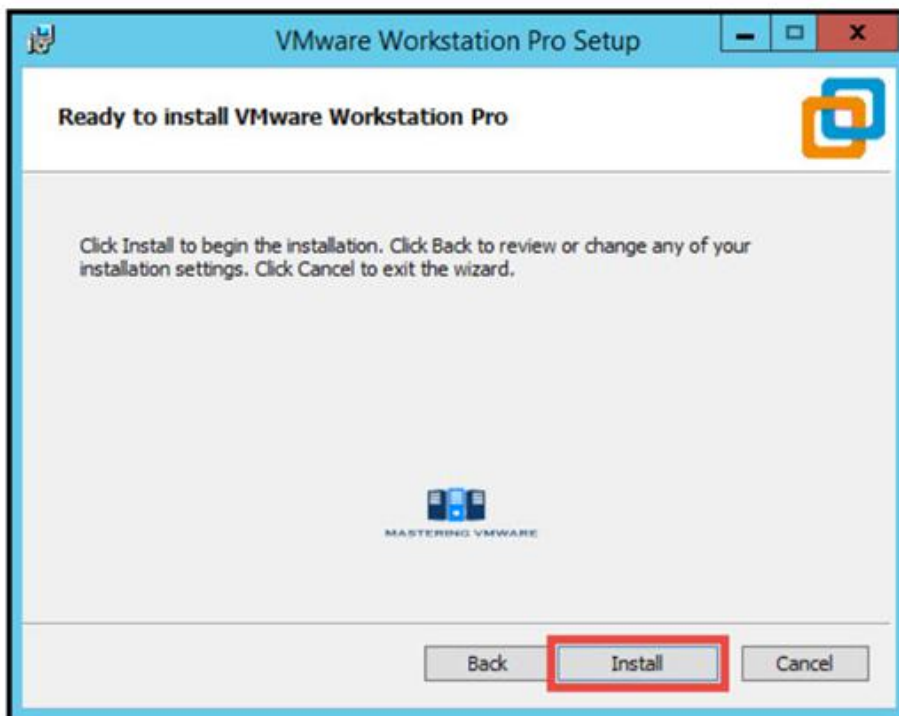
9. You can enable product startup and join the VMware Customer experience Improvement program here.
Click Next to Continue.



10. Select the shortcuts you want to create for easy access to VMware Workstation. Click Next to Continue.



11. Click Install button to start the installation.



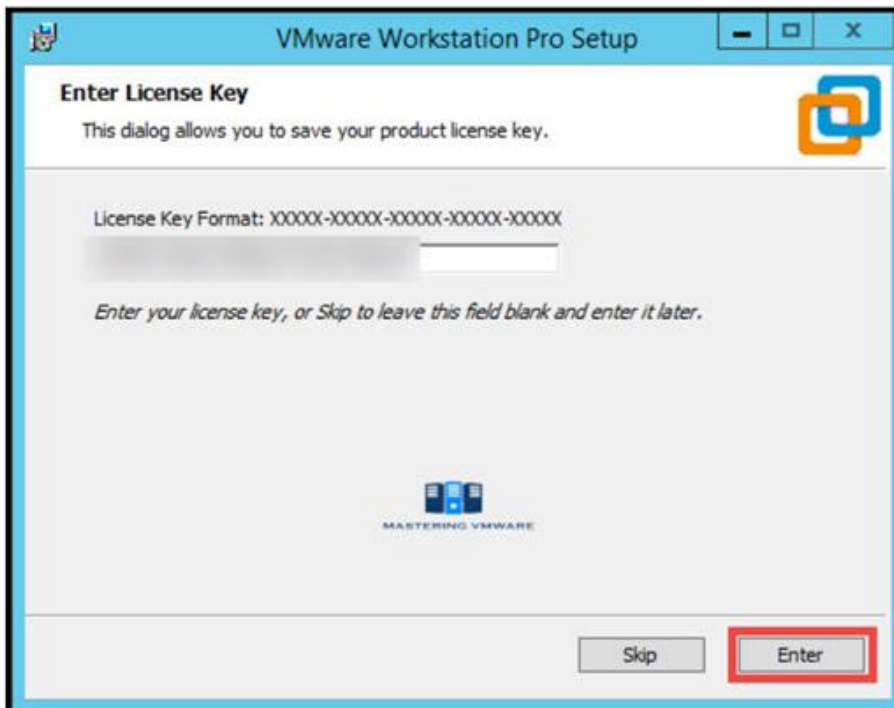
12. Installation will take just few seconds to complete.

If you have license-key then click on License to enter the license or you can also click Finish to exit the Installer.



13. Provide the License Key for VMware Workstation Pro.

Press Enter to continue.



(Suggestion : If you have Don't License key search for internet or ask for who have already installed in their system. They surely have License Key.)

14. Click Finish to exit the wizard.



15. That's it we have successfully installed VMware Workstation Pro.

Now you can start the VMware Workstation Pro by clicking on the shortcut on Desktop. Below is the Home screen of the VMware Workstation pro which you will see every time when you start Workstation.

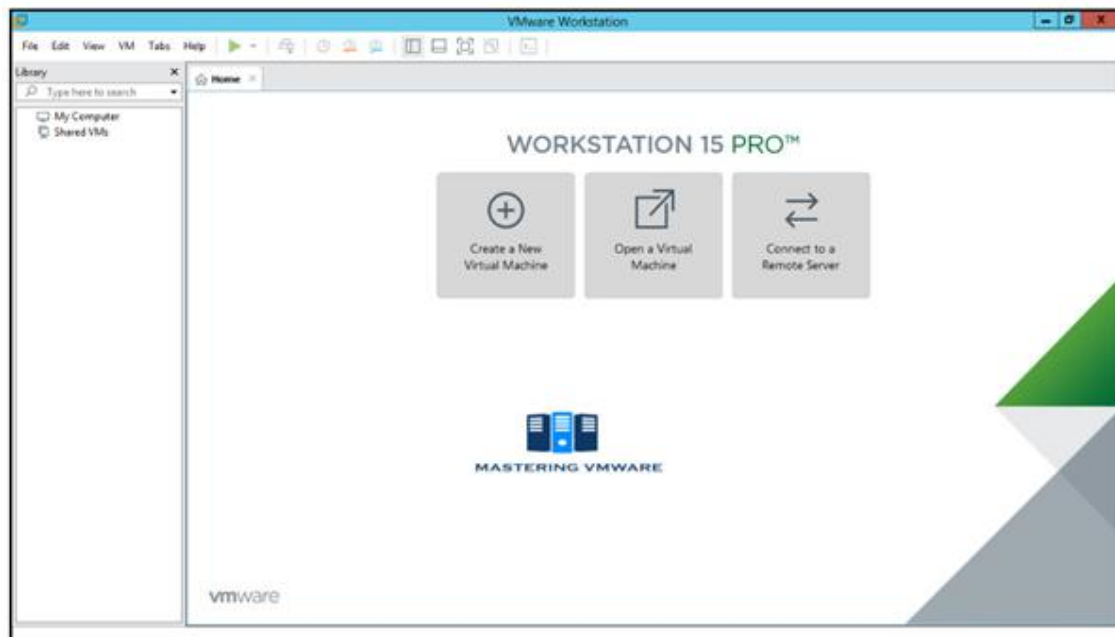


Image Credit : https://medium.com/@ankitgupta_974
VMware successfully setup and installed

JOB SHEET 1

Lakukan instalasi VMware jelaskan fungsi menu-menu yang ada dalam aplikasi VMware.

LAPORAN HASIL PERCOBAAN: