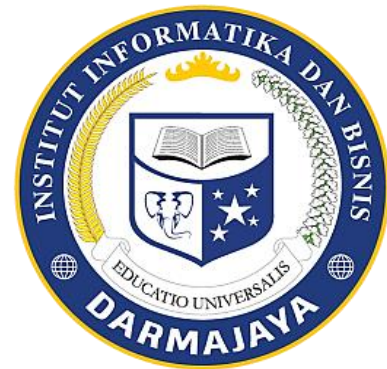


*Bahan Ajar*

## Modul Praktikum

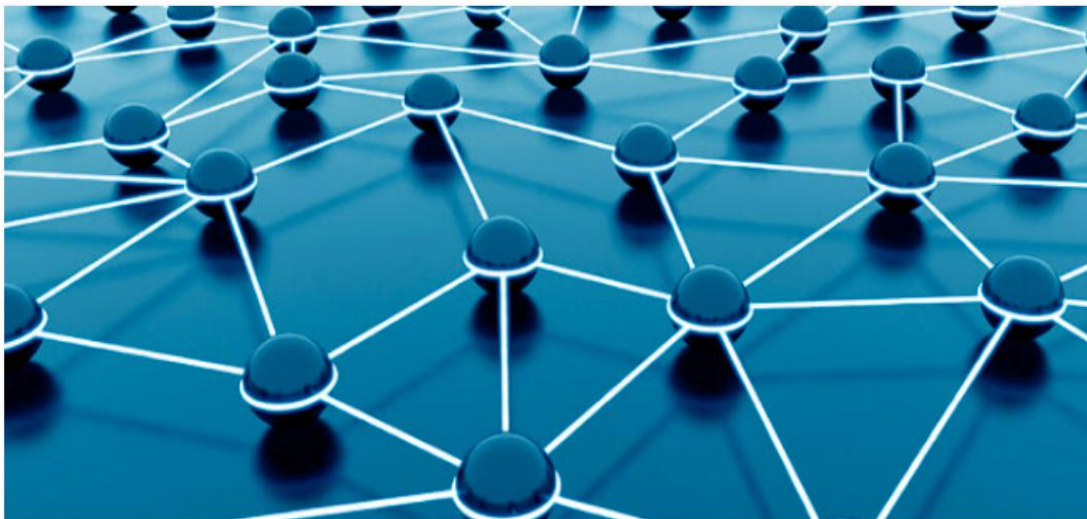
# WIRELESS SENSOR NETWORK (WSN)

Kode Matakuliah: SKO21428



Penyusun:

Bayu Nugroho. S.Kom., M.Eng



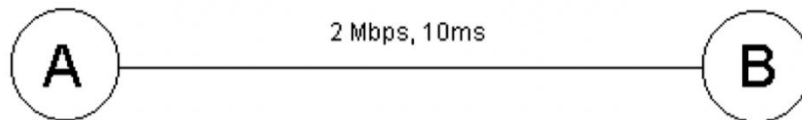
**PROGRAM STUDI SISTEM KOMPUTER  
FAKULTAS ILMU KOMPUTER  
INSTITUT INFORMATIKA DAN BISNIS DARMAJAYA  
2024**

# Modul 2

## Duplex Link

---

Buatlah skema jaringan pada simulasi NS2 seperti gambar berikut ini:



Ketikkan Perintah berikut:

```
#Create a simulator object
set ns [new Simulator]
#Open the nam trace file
set nf [open out.nam w]
$ns namtrace-all $nf
#Define a 'finish' procedure
proc finish {} {
    global ns nf
    $ns flush-trace
    #Close the trace file
    close $nf
    #Execute nam on the trace file
    exec nam out.nam &
    exit 0
}
#Create two nodes
set n0 [$ns node]
set n1 [$ns node]
#Create a duplex link between the nodes
$ns duplex-link $n0 $n1 2Mb 10ms DropTail.
#Call the finish procedure after 5 seconds of simulation time
$ns at 5.0 "finish"
#Run the simulation
$ns run
```

---

## JOBSHEET 2

Lakukan simulasi jaringan dan analisa hasil Simulasi.

LAPORAN HASIL PERCOBAAN: