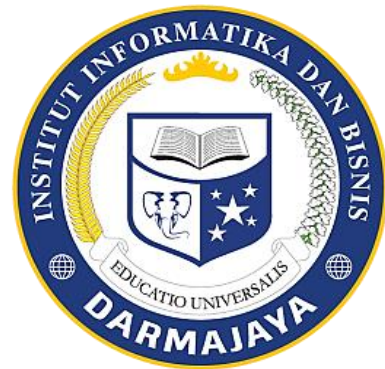


*Bahan Ajar*

## Modul Praktikum

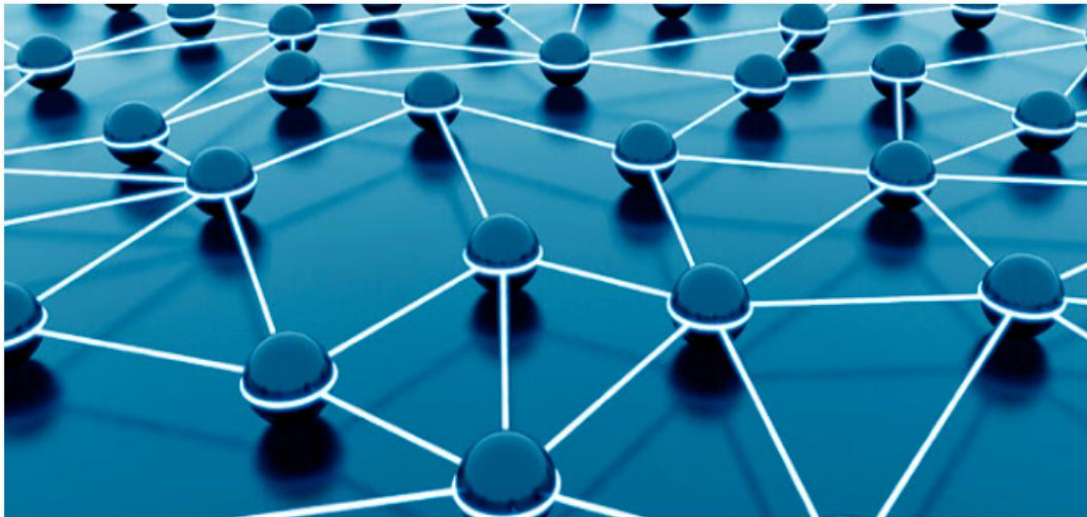
# WIRELESS SENSOR NETWORK (WSN)

Kode Matakuliah: SKO21428



Penyusun:

Bayu Nugroho. S.Kom., M.Eng



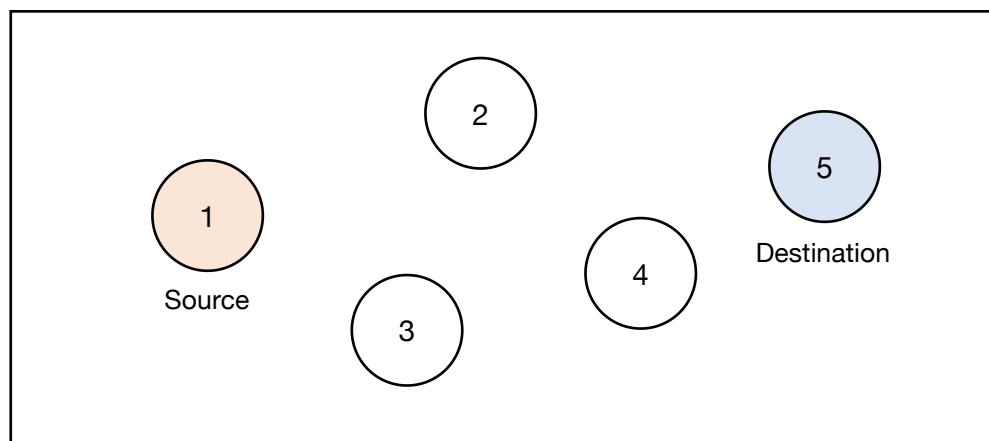
**PROGRAM STUDI SISTEM KOMPUTER  
FAKULTAS ILMU KOMPUTER  
INSTITUT INFORMATIKA DAN BISNIS DARMAJAYA  
2024**

# Modul 5

## Set Transmisi Wireless

---

Buat Skema node di simulator seperti gambar di bawah ini:



Setting pengaturan wireless seperti di bawah ini:

```
./threshold -m TwoRayGround 250
Phy/WirelessPhy set CPTresh_ 10.0
Phy/WirelessPhy set CSTresh_ 3.65262e-10 ;#250m
Phy/WirelessPhy set RXThresh_ 3.65262e-10 ;#250m
Phy/WirelessPhy set Rb_ 2*1e6
Phy/WirelessPhy set Pt_ 0.2818
Phy/WirelessPhy set freq_ 914e+6
Phy/WirelessPhy set L_ 1.0
```

Where,

TwoRayGround → Radio Propagation Model

250 → Distance in meters

CPTresh → Capture Threshold

CSTresh → Carrier Sense Threshold

RxThresh → Receiver Sensitivity Threshold

Pt → Transmission Power

freq → frequency

L → System Loss

---

## JOBSHEET 5

Lakukan percobaan ke 5, Simulasi Set Transmisi Wireless menggunakan software simulator, jelaskan tahapan dan hasil simulasinya.

LAPORAN HASIL PERCOBAAN: