

Ladder Programming (cont.)

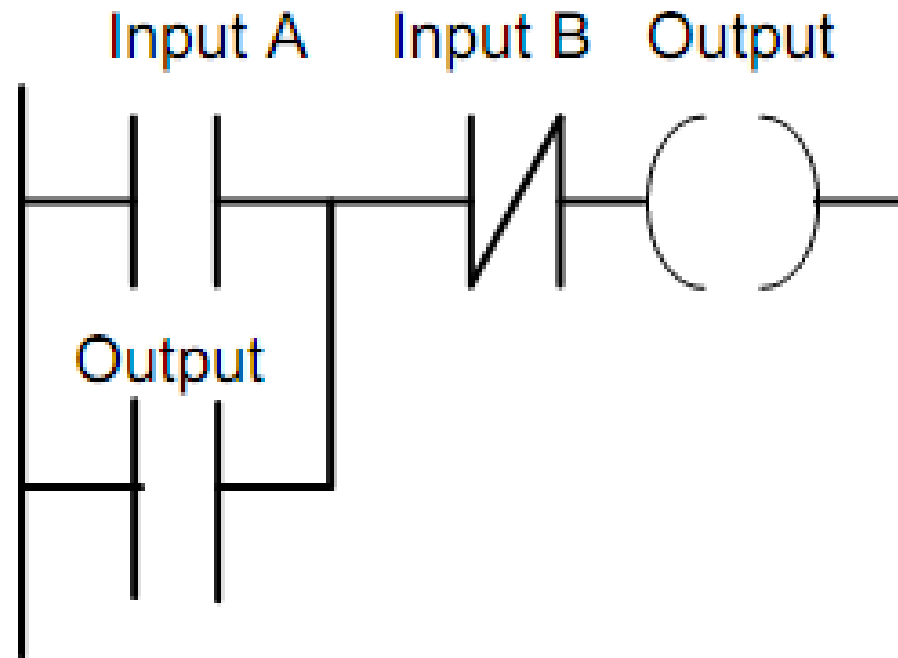
Latching

Seringkali ada situasi di mana perlu untuk menahan output aktif, bahkan ketika input berhenti.

Contoh sederhana seperti situasi motor yang dimulai dengan menekan tombol tekan.

Latching sirkuit digunakan untuk melakukan operasi mempertahankan output tetap aktif setelah diberi energi.





Latched circuit

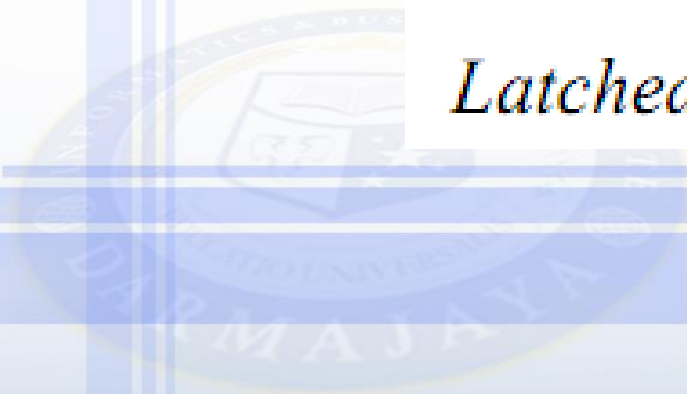
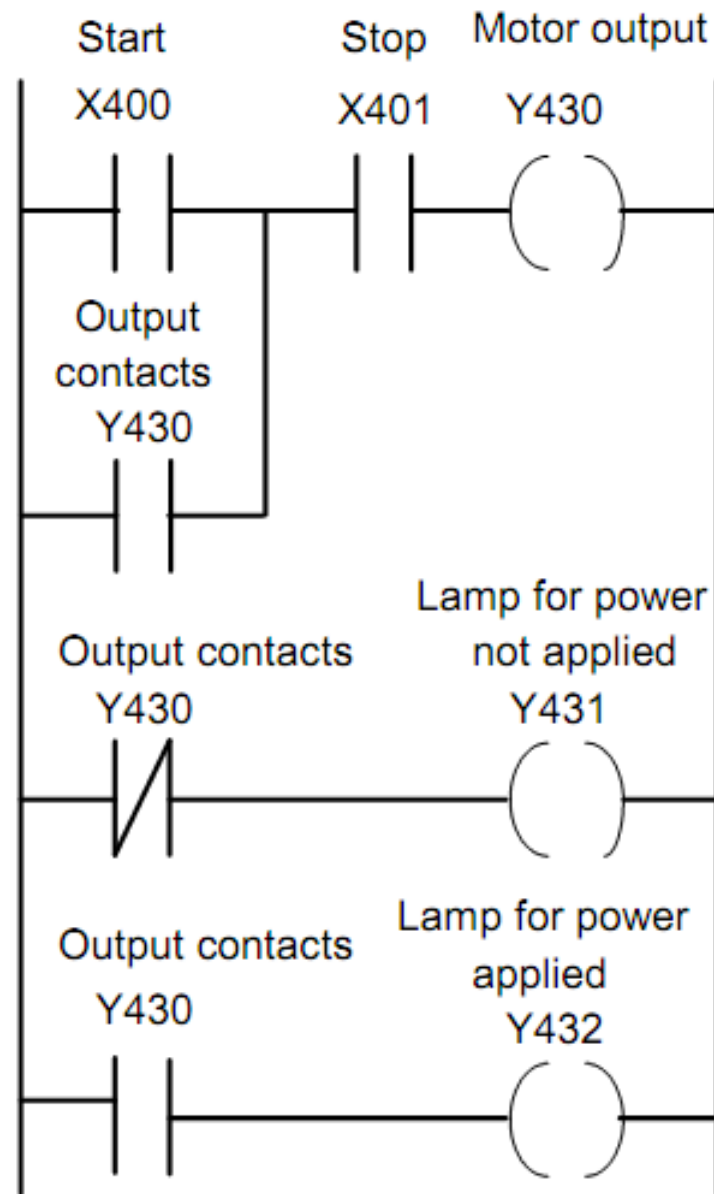
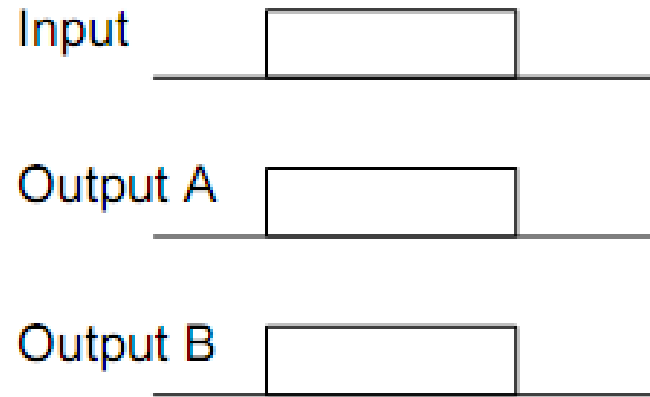
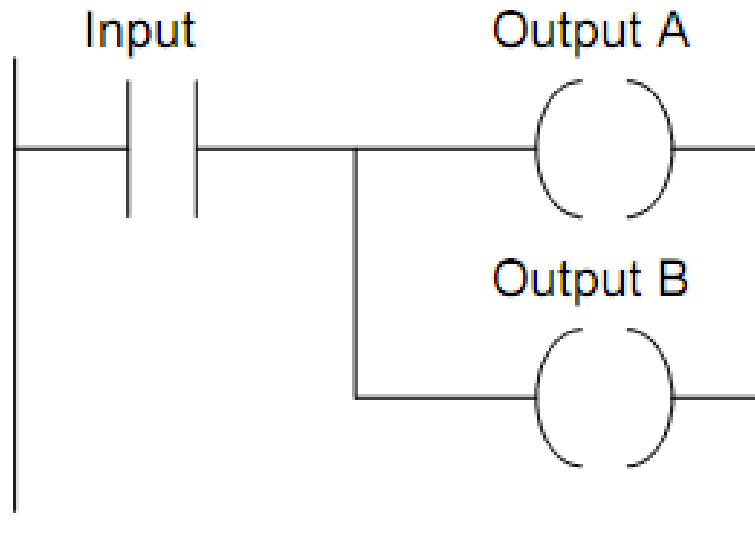


Illustration of application

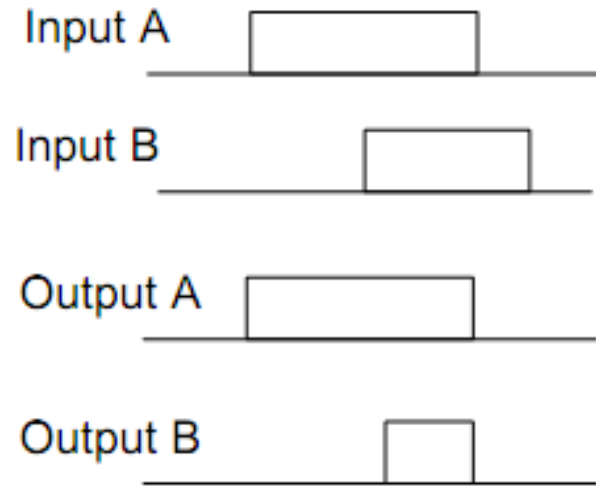
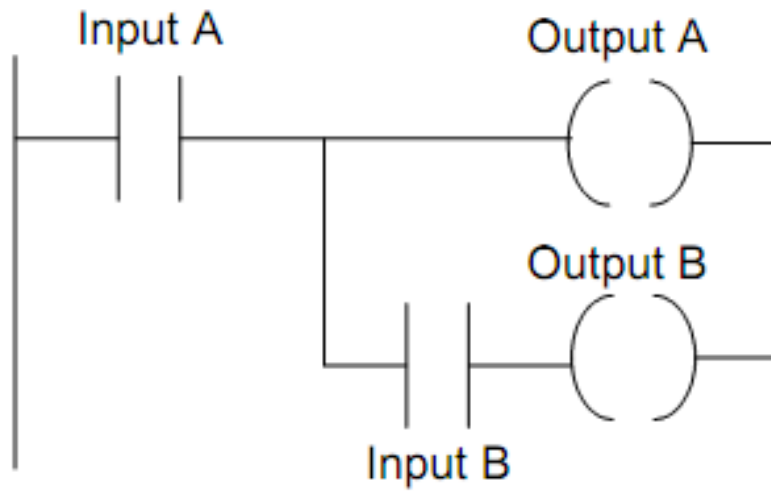


Multiple Outputs

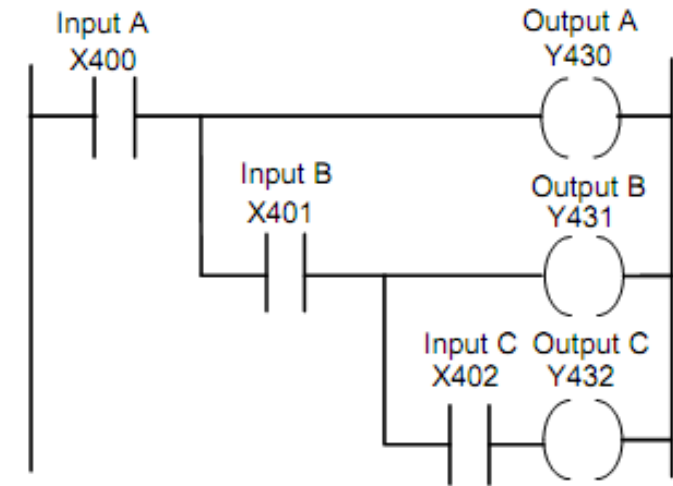
Two outputs



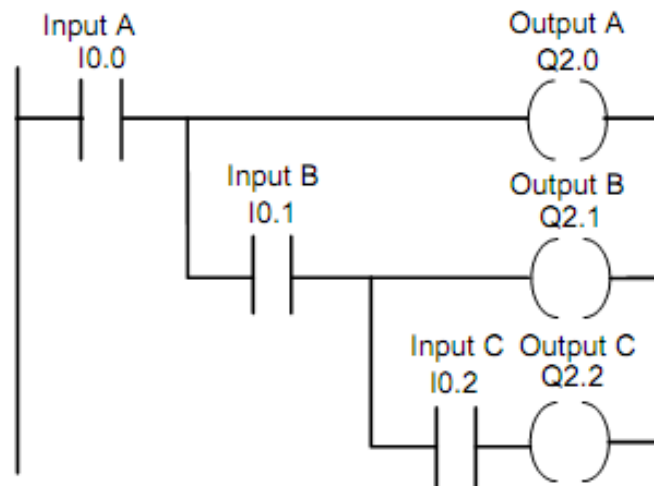
Two inputs and two outputs.



Sequenced outputs



(a)



(b)

