

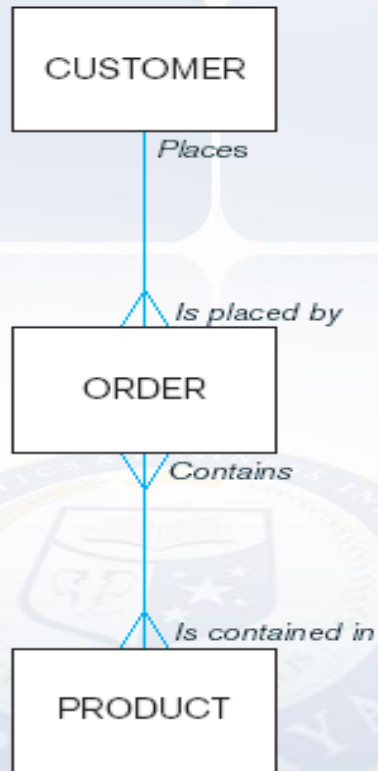
# *Suplemen Materi Entity Relationship Diagram*



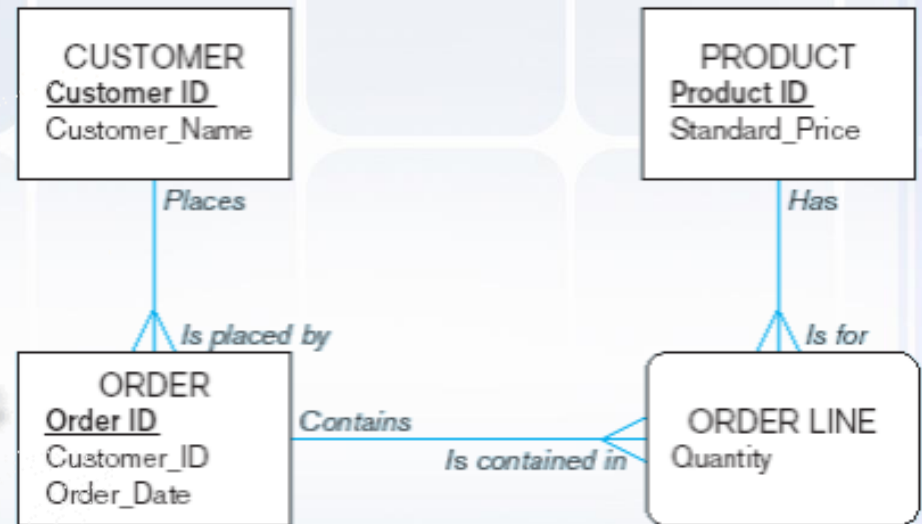
**Dr. Sutedi, S.Kom., M.T.I**

# Sudut Pandang Dalam Memodelkan Data

## Enterprise Data Model



## Project-Level Data Model



# Model *Entity-Relationship*

Entitas

Tipe entitas

*Instance* entitas



# Model *Entity-Relationship*

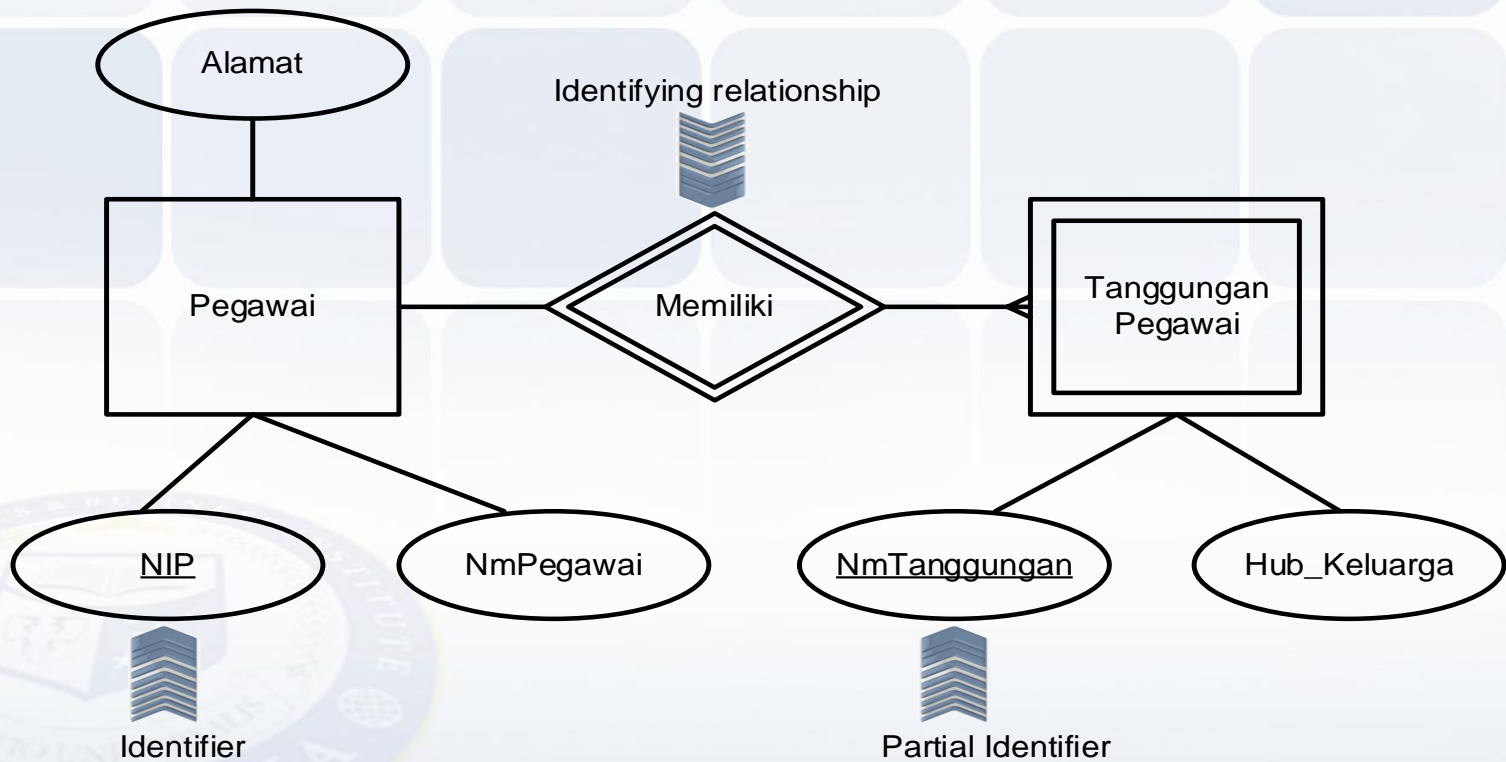
Strong Entity

Weak Entity

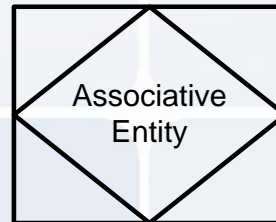


# Model *Entity-Relationship*

Contoh *Strong Entity* dan *Weak Entity*:

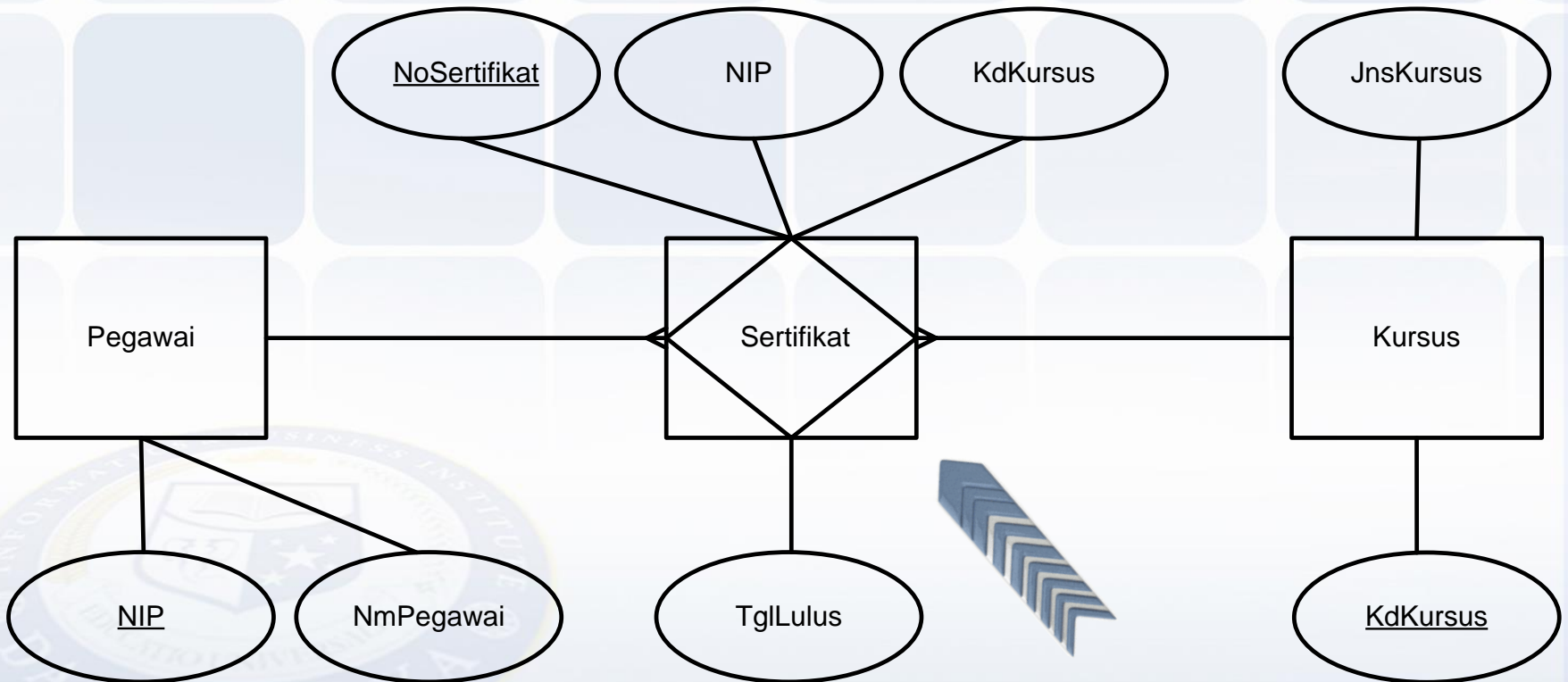


# Model *Entity-Relationship*



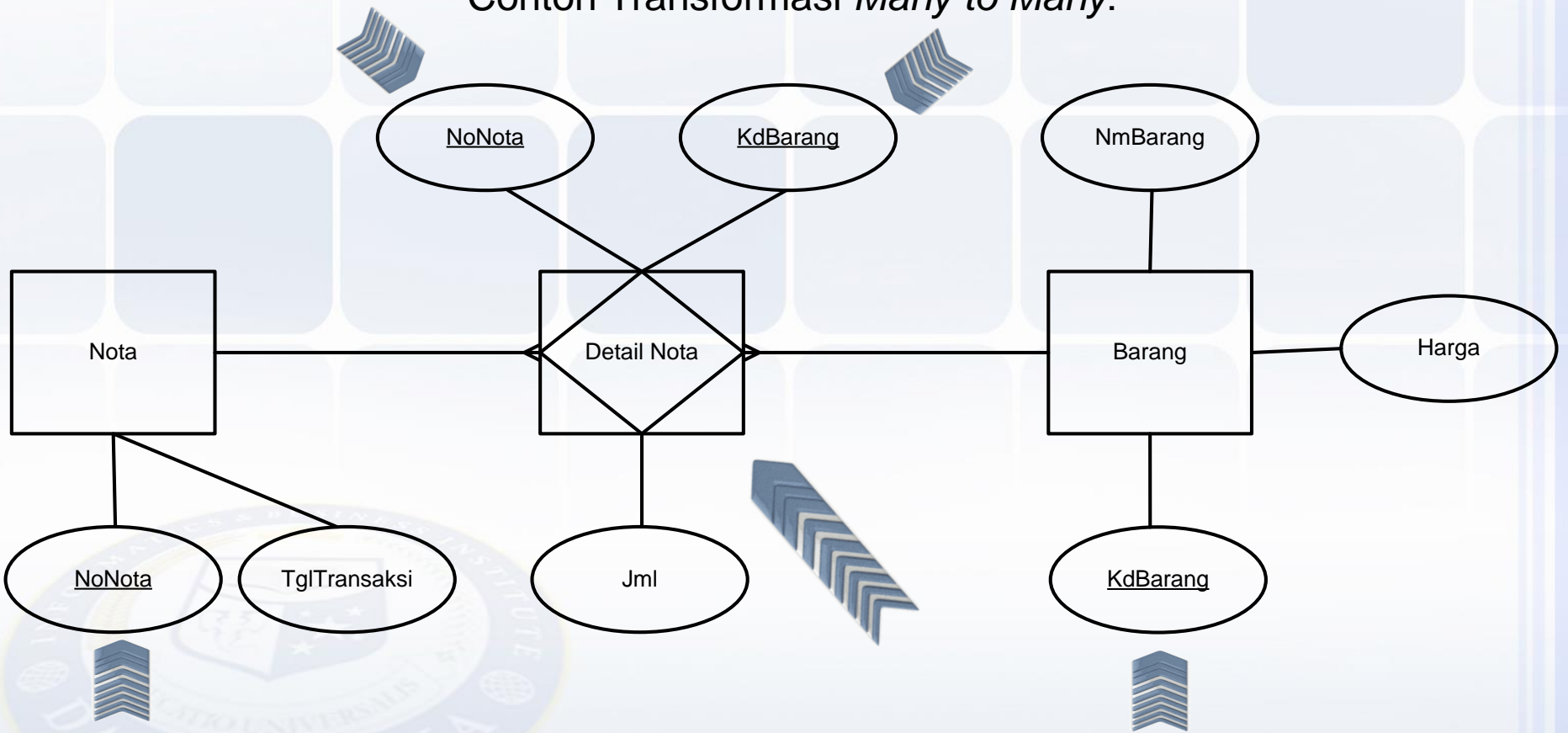
# Model *Entity-Relationship*

Contoh *Associative Entity* :



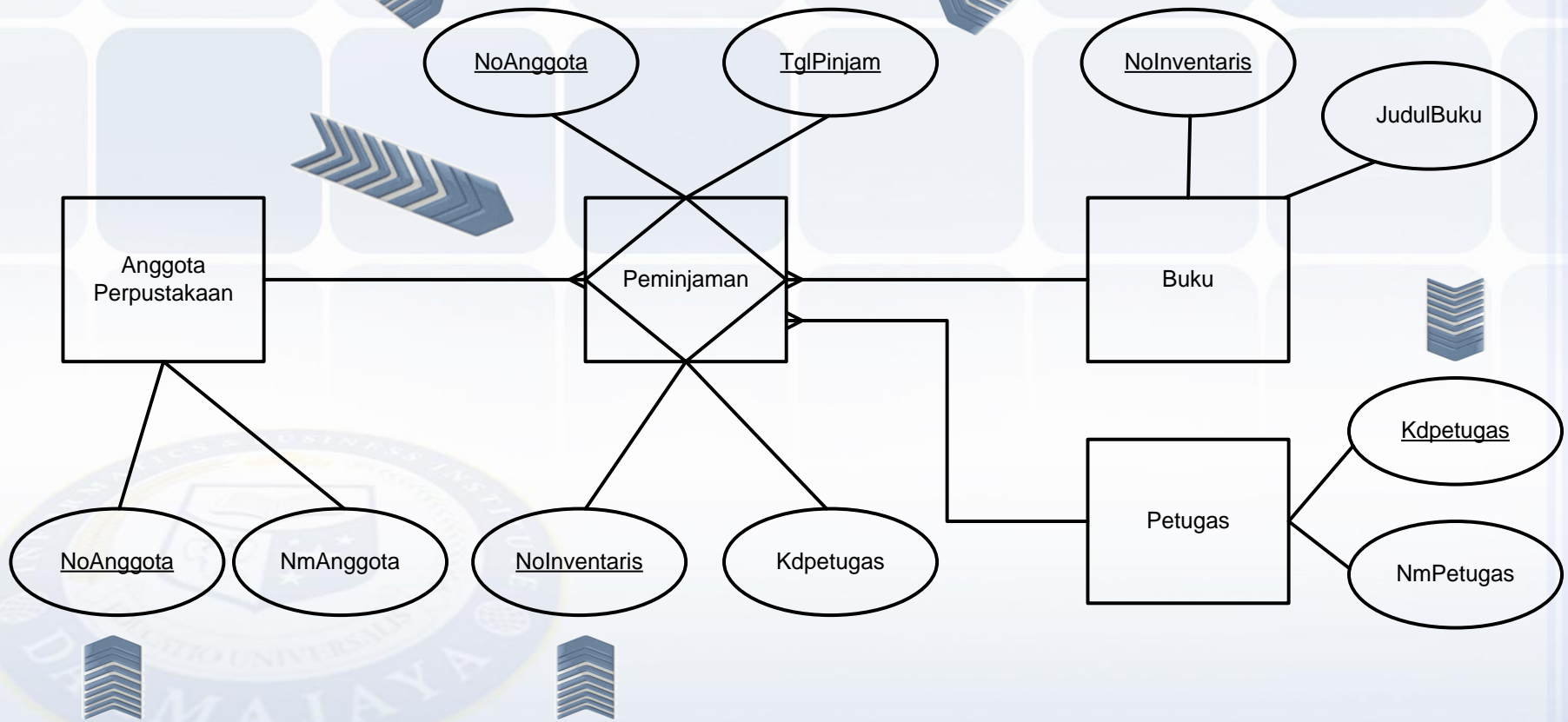
# Model *Entity-Relationship*

Contoh Transformasi *Many to Many*:



# Model *Entity-Relationship*

Contoh Transformasi *Ternary Degree*:



# Model *Entity-Relationship*

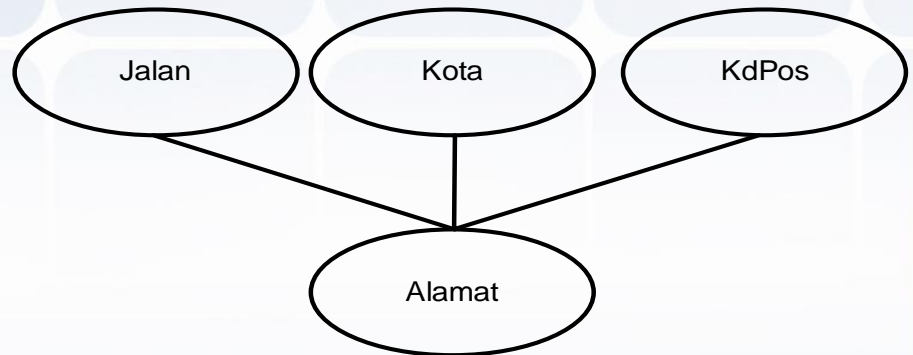
## Atribut

Sederhana

Komposit



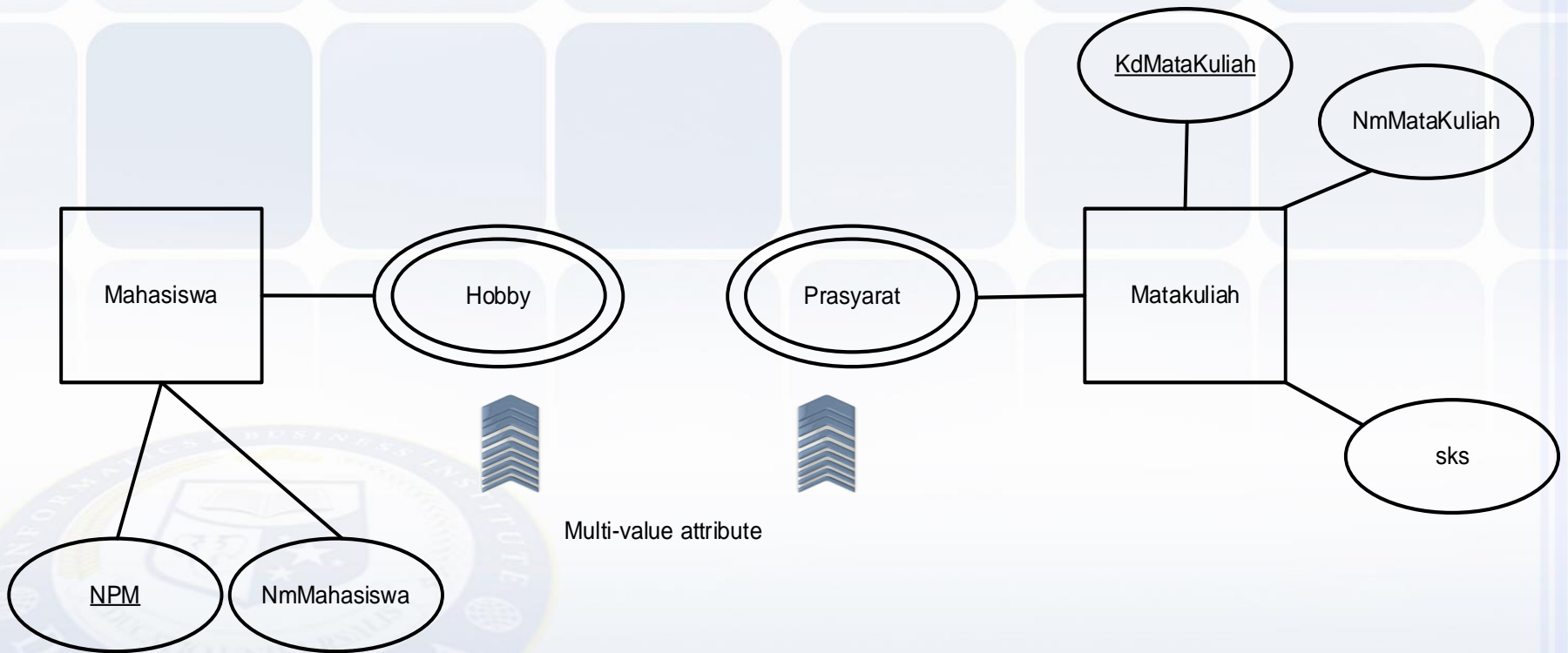
Atribut sederhana



Atribut komposit

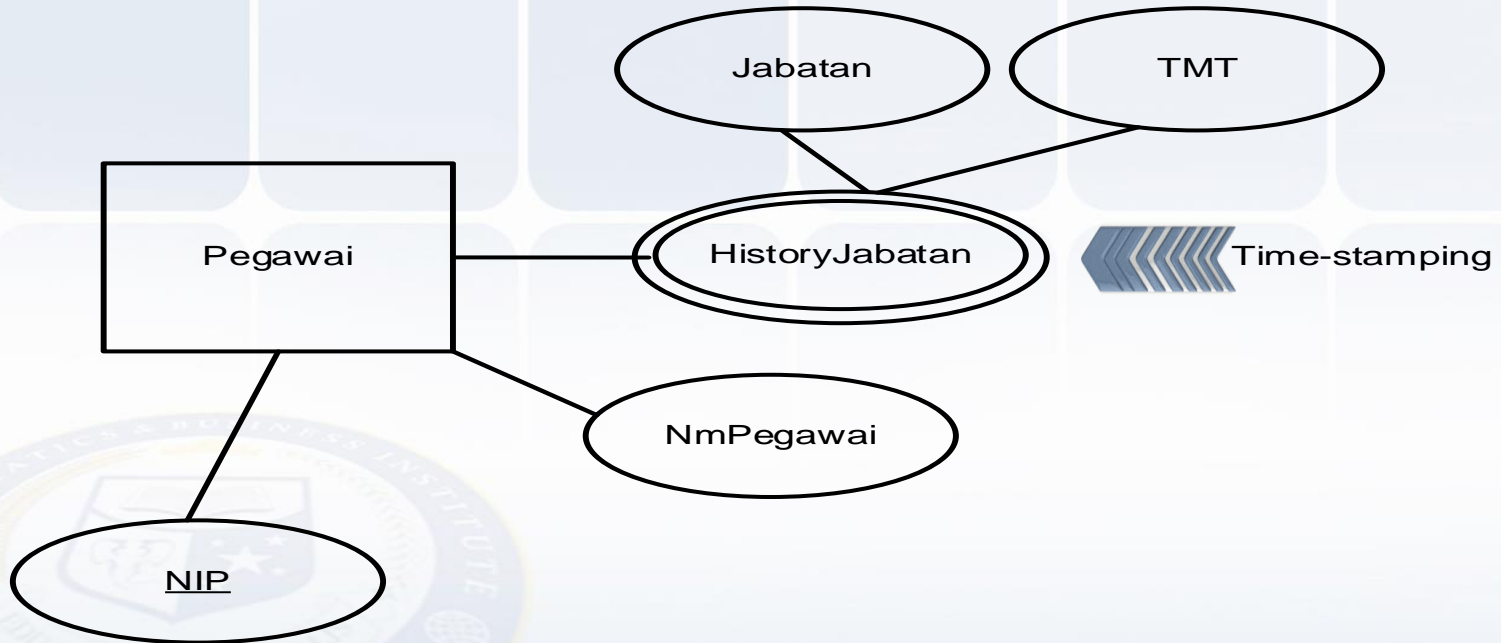
# Model *Entity-Relationship*

## Atribut *Multi-Value*



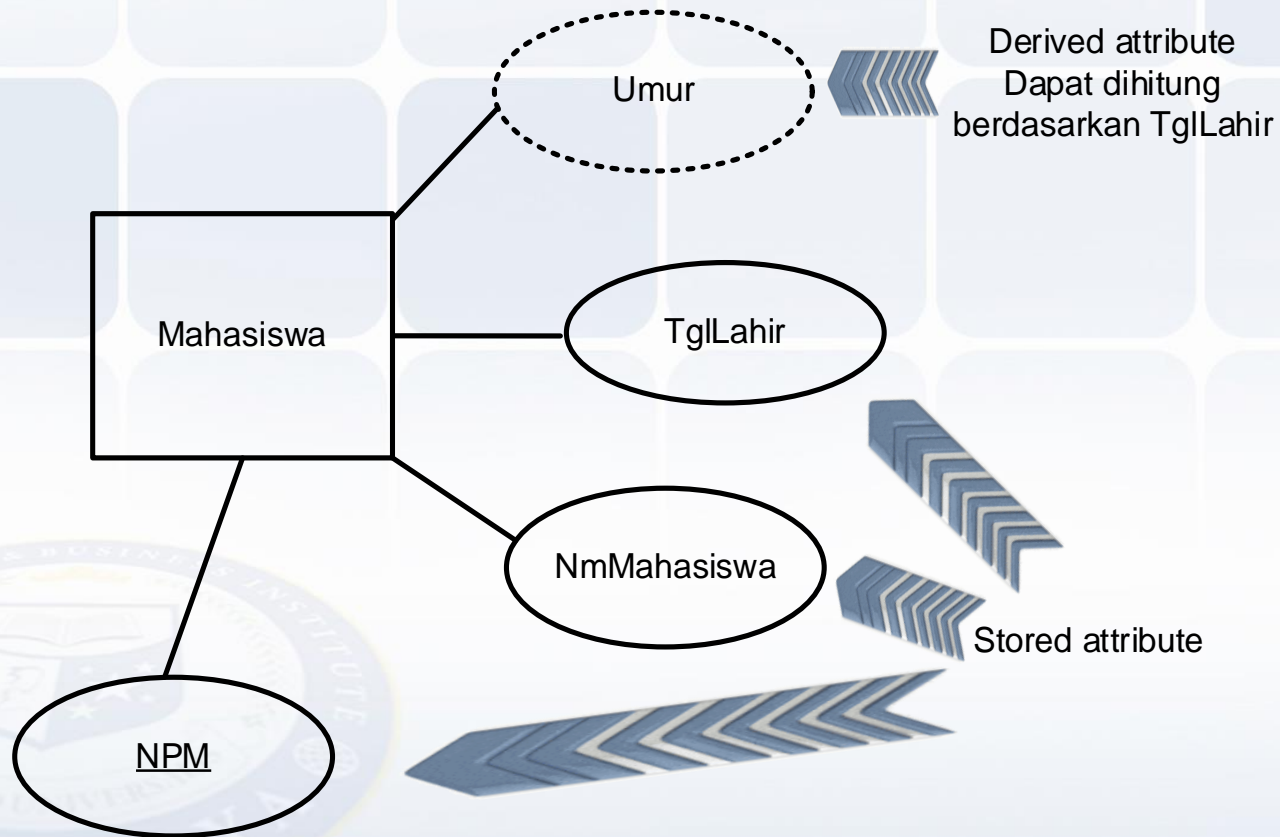
# Model *Entity-Relationship*

## Atribut Komposit dan *Multi-Value*



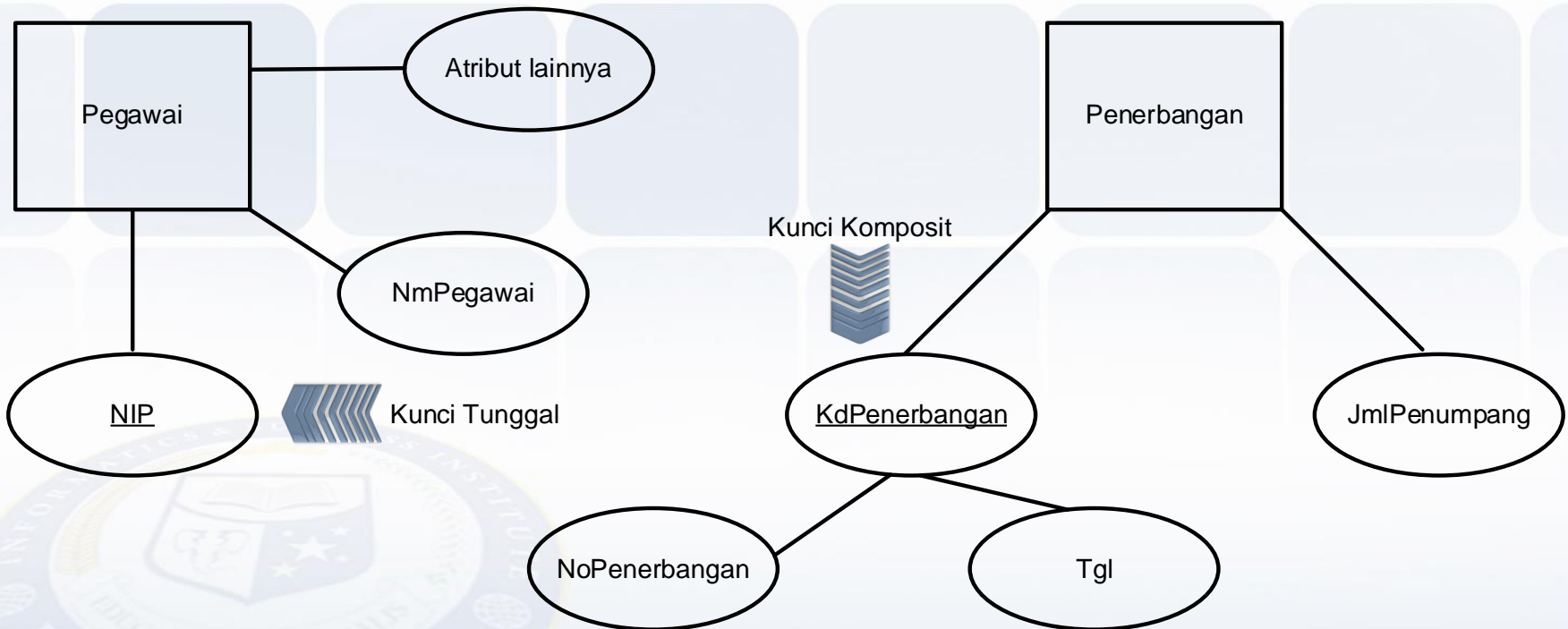
# Model *Entity-Relationship*

## *Stored Attribute dan Derived Attribute*



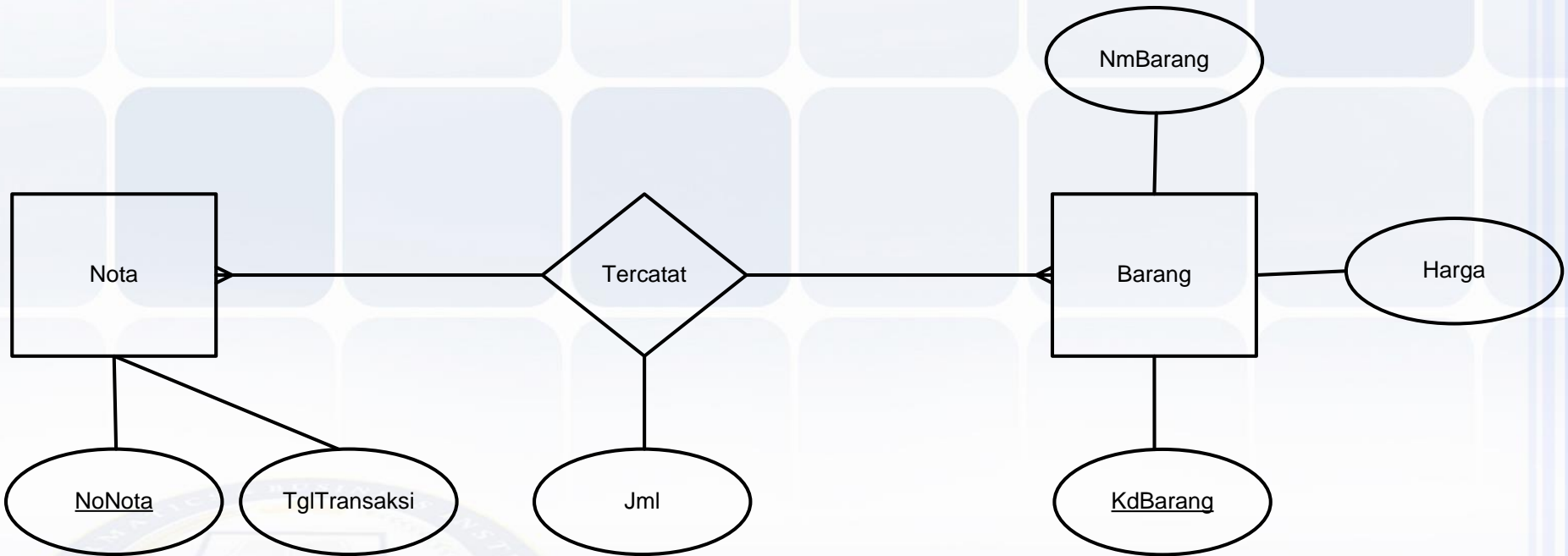
# Model *Entity-Relationship*

## Atribut Kunci Tunggal dan Kunci Komposit



# Model *Entity-Relationship*

## Atribut Relasional



  
atribut relasional

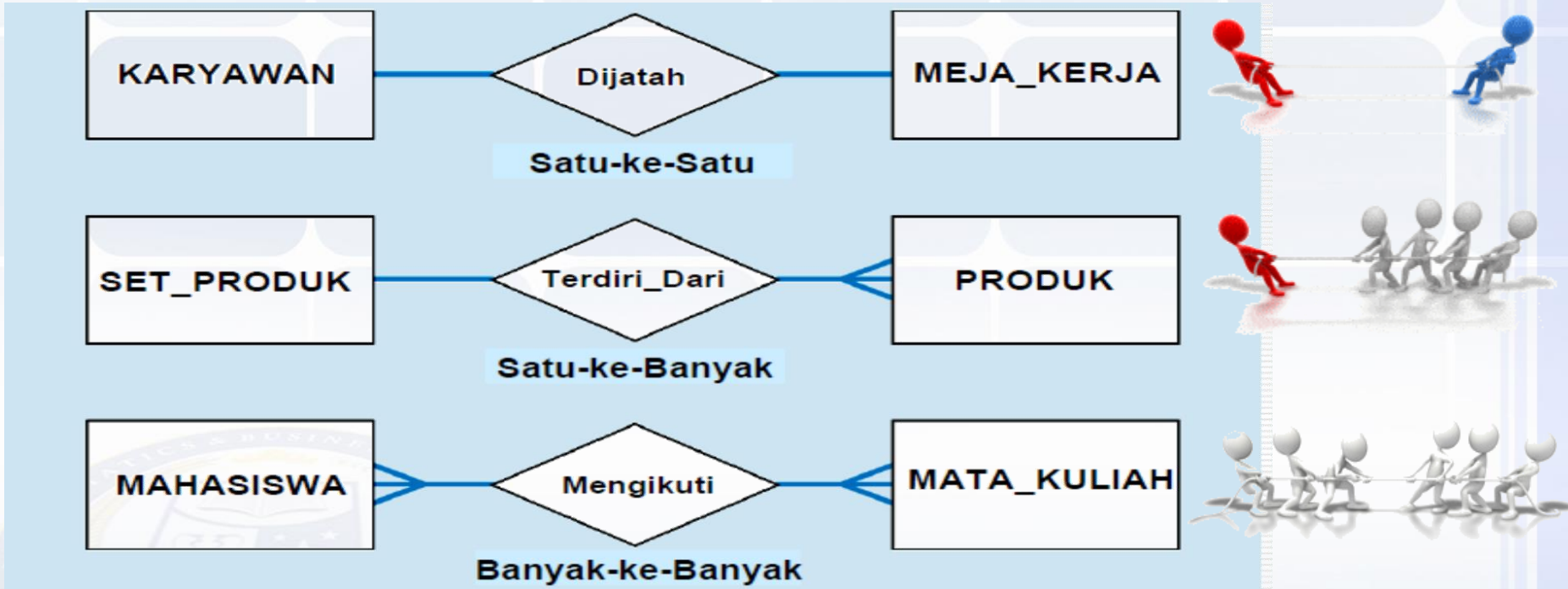
# Model *Entity-Relationship*

## Derajat Relasional



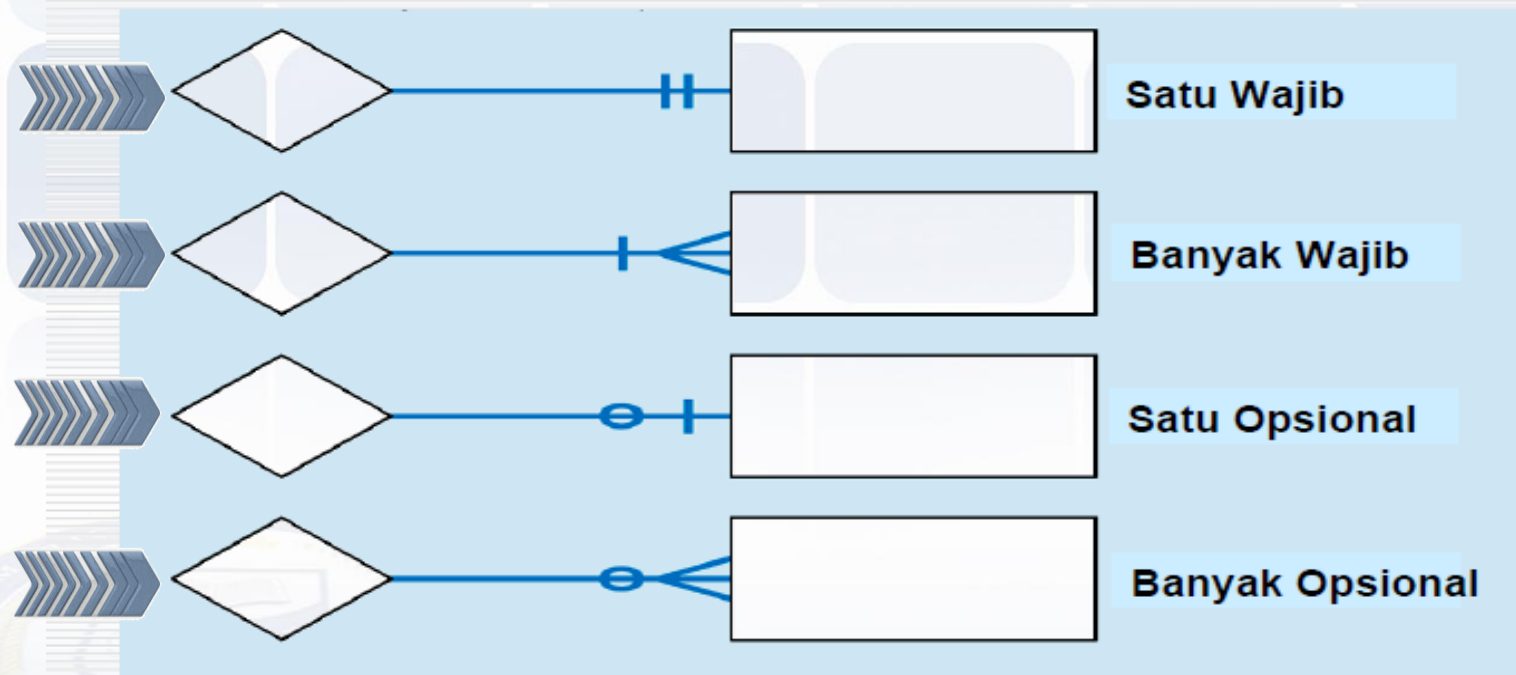
# Model *Entity-Relationship*

## Kardinalitas Relasional



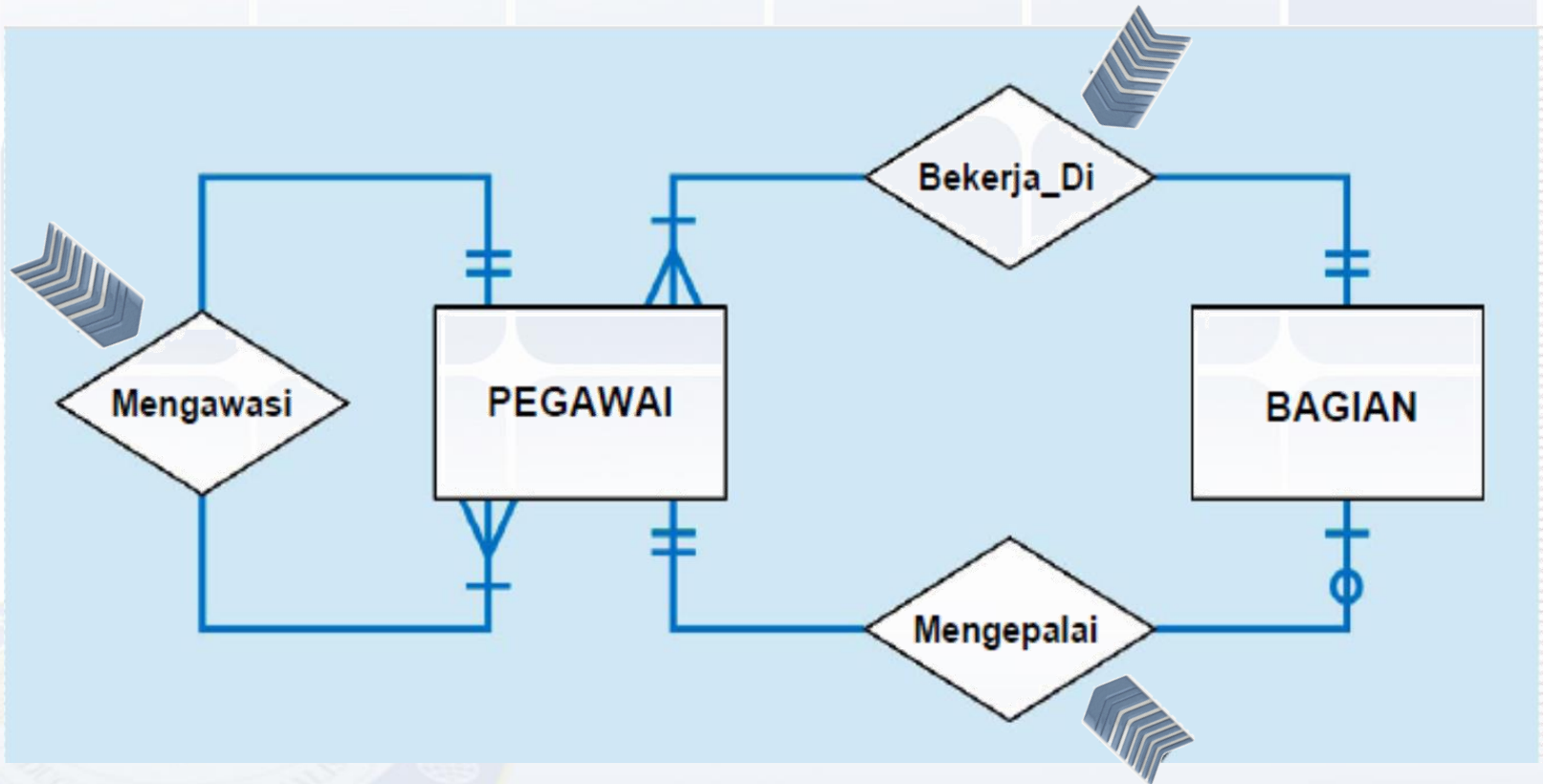
# Model *Entity-Relationship*

## Notasi Konstrain Relasional



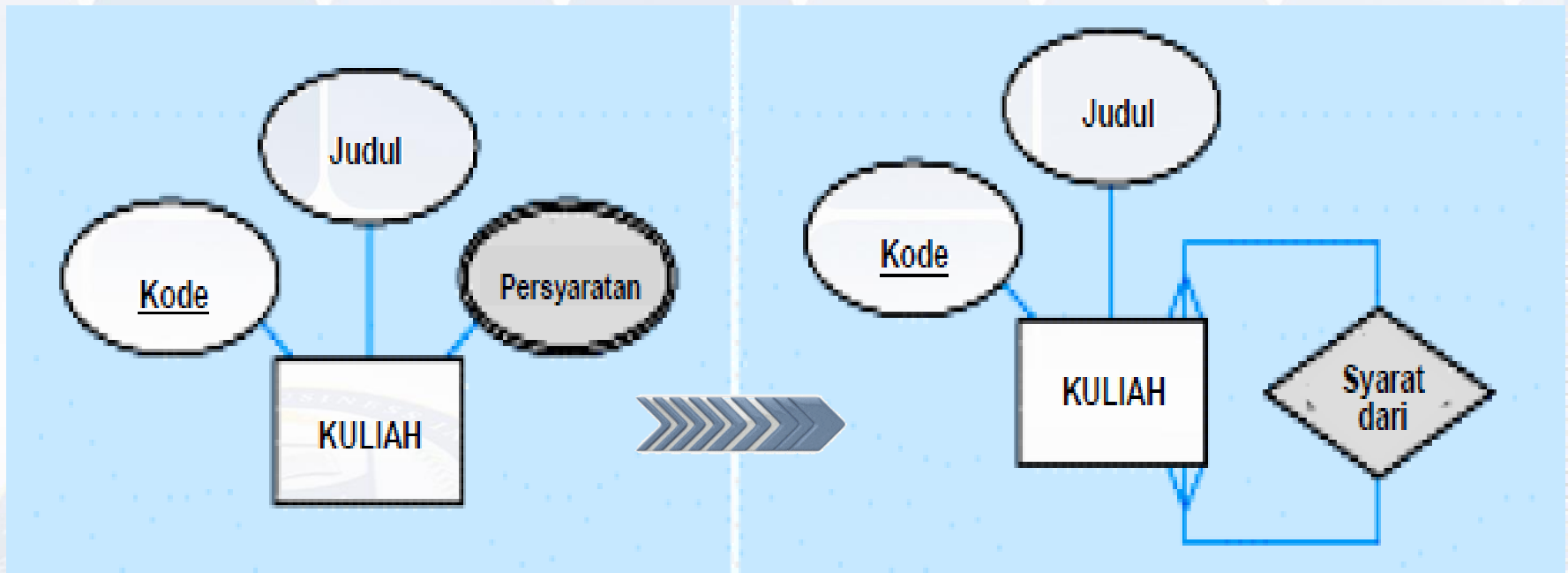
# Model *Entity-Relationship*

## Relasional Majemuk



# Model *Entity-Relationship*

Transformasi Atribut *Multivalued* ke Relasional



THANK YOU

*Sampai jumpa di sesi berikutnya*

