

Bahan Ajar

Chapter 4



Materi Pembelajaran

Matakuliah :

DESAIN DAN SIMULASI RANGKAIAN ELEKTRONIKA

Kode Matakuliah : SKO 20425

Prodi : **SISTEM KOMPUTER**

Dosen Pengampu Matakuliah:

Bayu Nugroho, S.Kom., M.Eng

Chapter 4

Tables of Content

The Electronic Simulators 2
Download Simulator
Setup & Installation
Tugas Mandiri



Chapter 4

The Electronic Simulators 2

Proteus Simulator

Download :

<https://drive.google.com/file/d/0Bzktu9tEVGmMVjzVaXVqTVpxa0k/view?resourcekey=0-tltbGTe6W2C1zrqMpf18cA>

Proteus

PCB Design | Circuit Simulation | Visual Designer | Pricing | Resources | Contact

PCB Design & Simulation Made Easy

The Proteus Design Suite combines ease of use with a powerful feature set to enable the rapid design, test and layout of professional printed circuit boards.

Proteus PCB Design

Proteus PCB tools seamlessly combines schematic capture and PCB layout to provide a powerful, integrated and easy to use suite of tools for professional PCB Design.

Proteus Circuit Simulation

Design, Test and Debug complete embedded systems inside schematic capture before ordering a physical prototype. VSM brings ASIC development to the embedded workflow.

Proteus IoT Builder

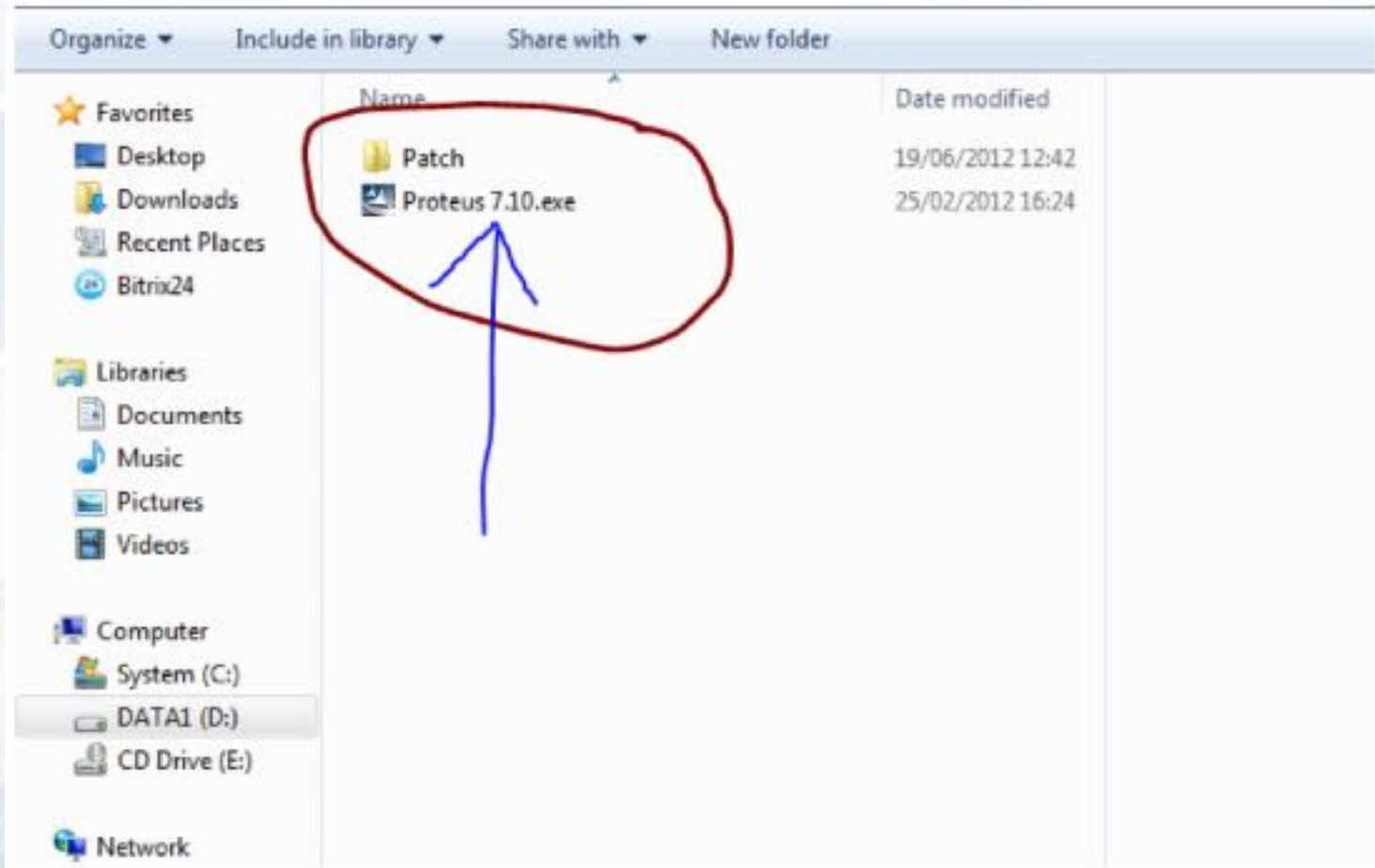
A complete workflow for designing an Arduino™ or Raspberry Pi® appliances and then controlling it remotely from a phone or browser. Build multi-appliance systems with the MQTT protocol. Design, simulate and deploy directly from Proteus.

8.13 Live

Chapter 4

The Electronic Simulators

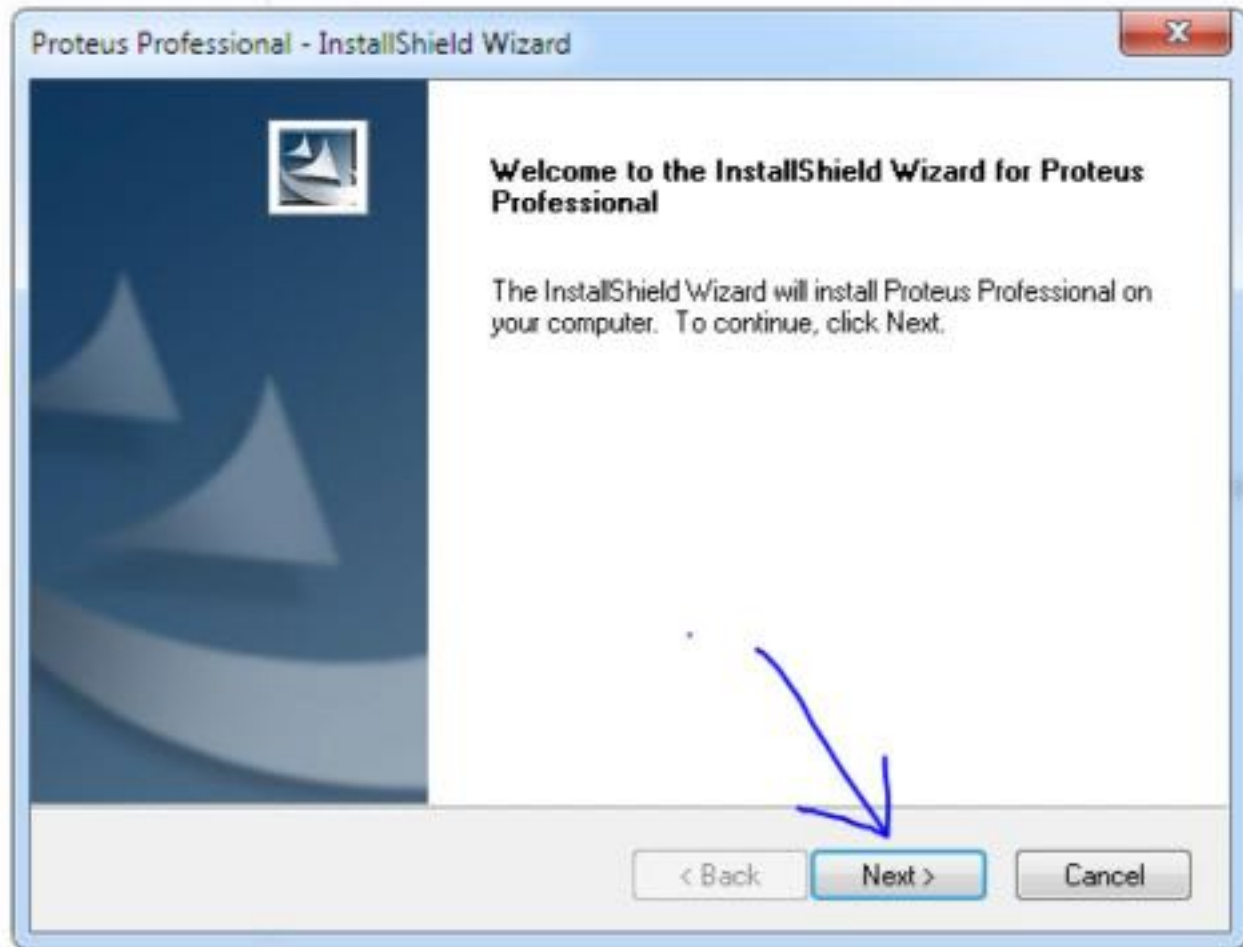
Setelah selesai download, buka Folder. Klik file "Proteus 7.10.exe"



Chapter 4

The Electronic Simulators

Klik "Next"



Chapter 4

The Electronic Simulators

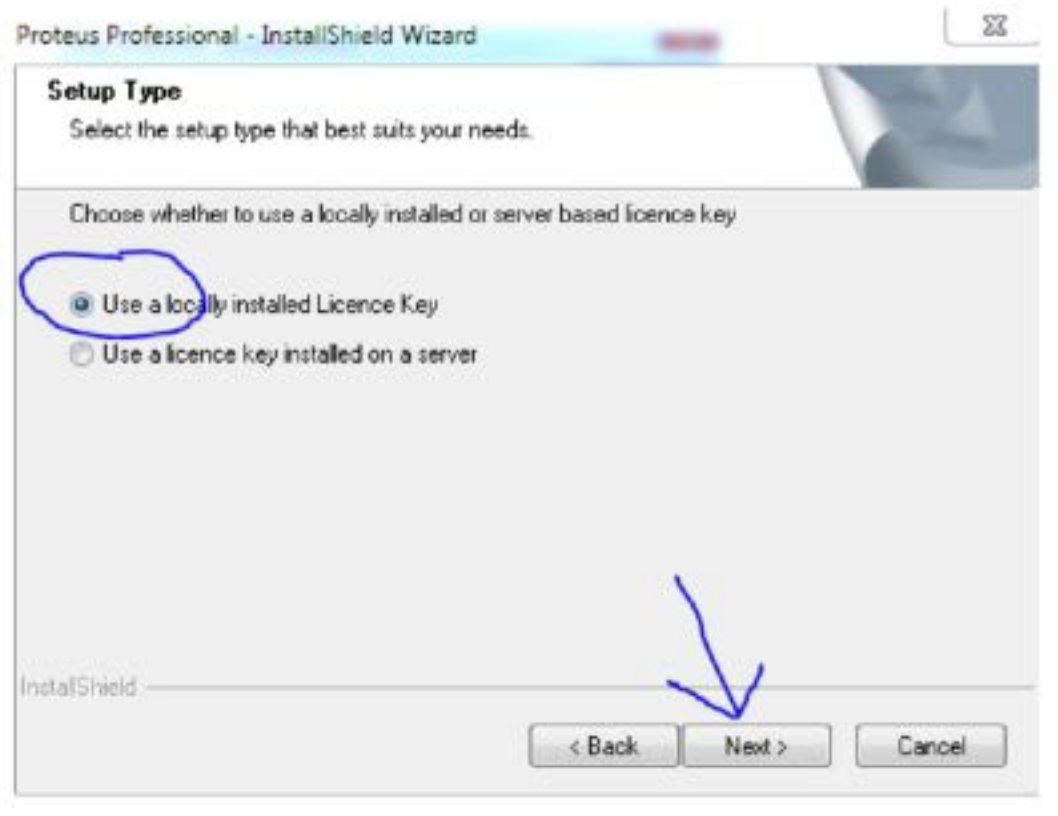
Klik "Yes"



Chapter 4

The Electronic Simulators

Pilih "Use a local installed Licence Key". Kemudian klik "Next"



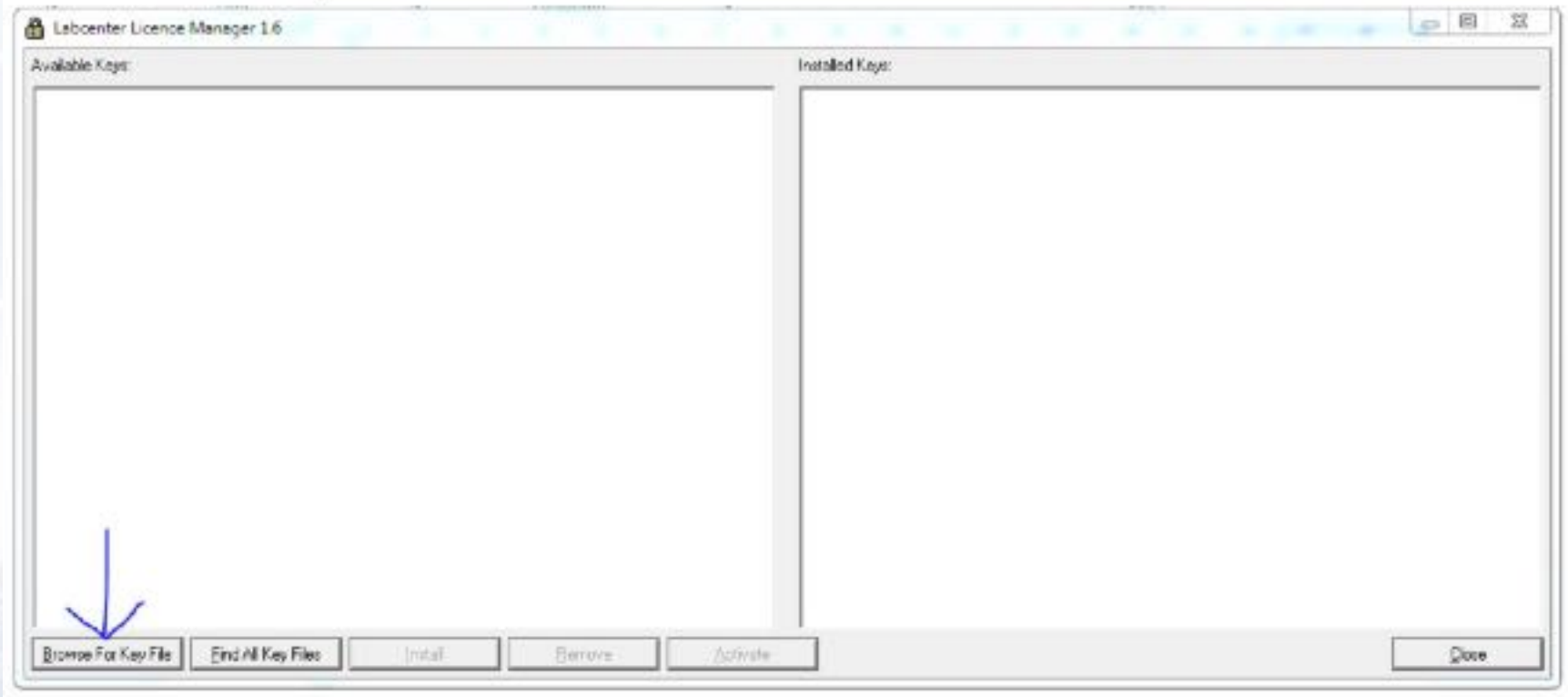
Silahkan masukkan
Licence Key

Note: *Gunakan Produk Resmi
dengan membeli software yang
berlisensi*

Chapter 4

The Electronic Simulators

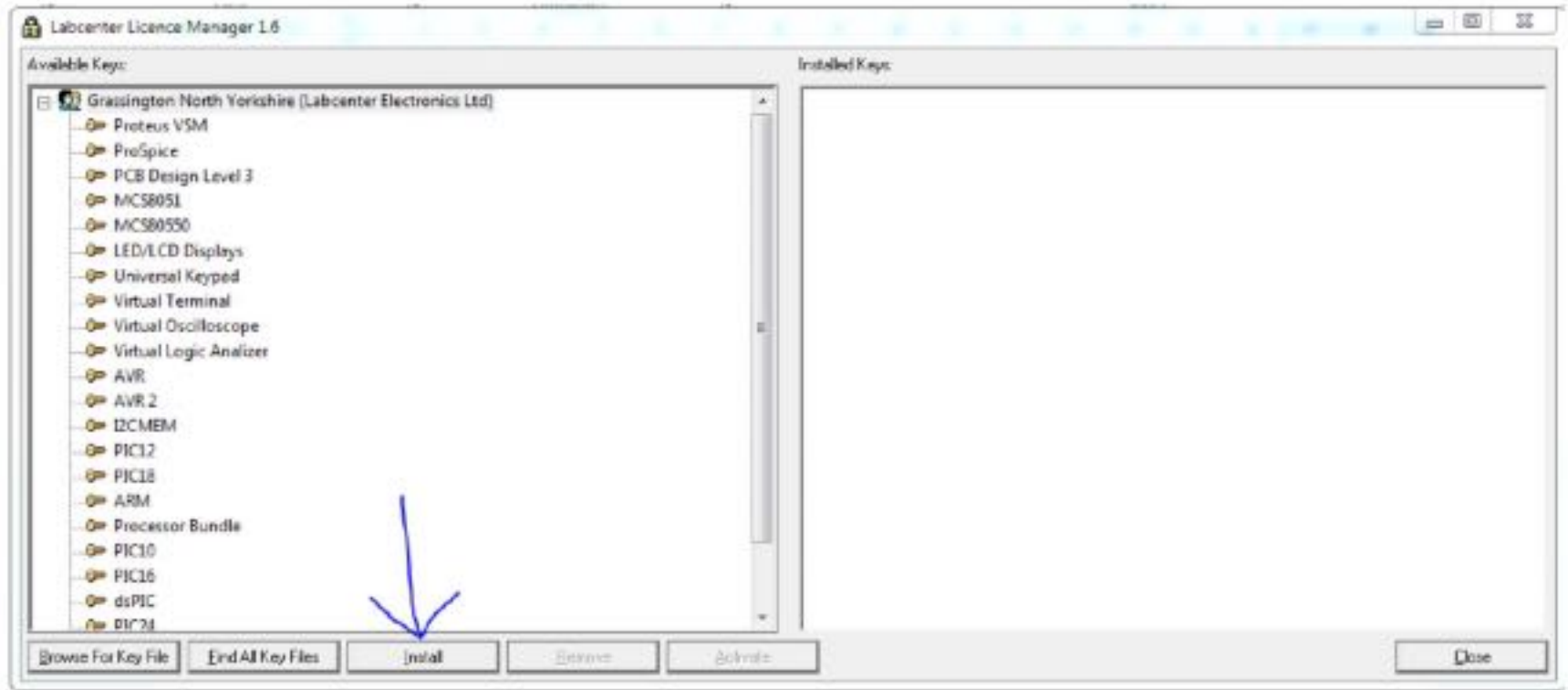
Klik "Browse For Key File"



Chapter 4

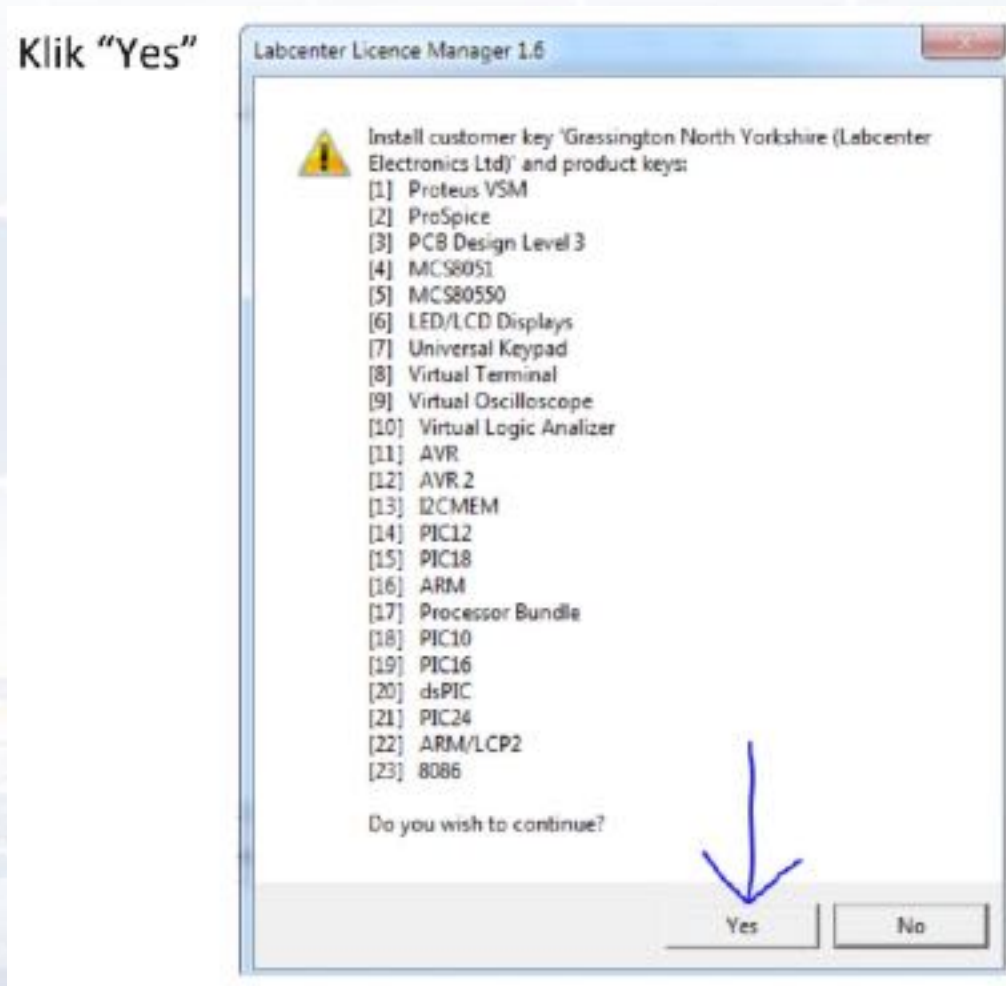
The Electronic Simulators

Klik "Install"



Chapter 4

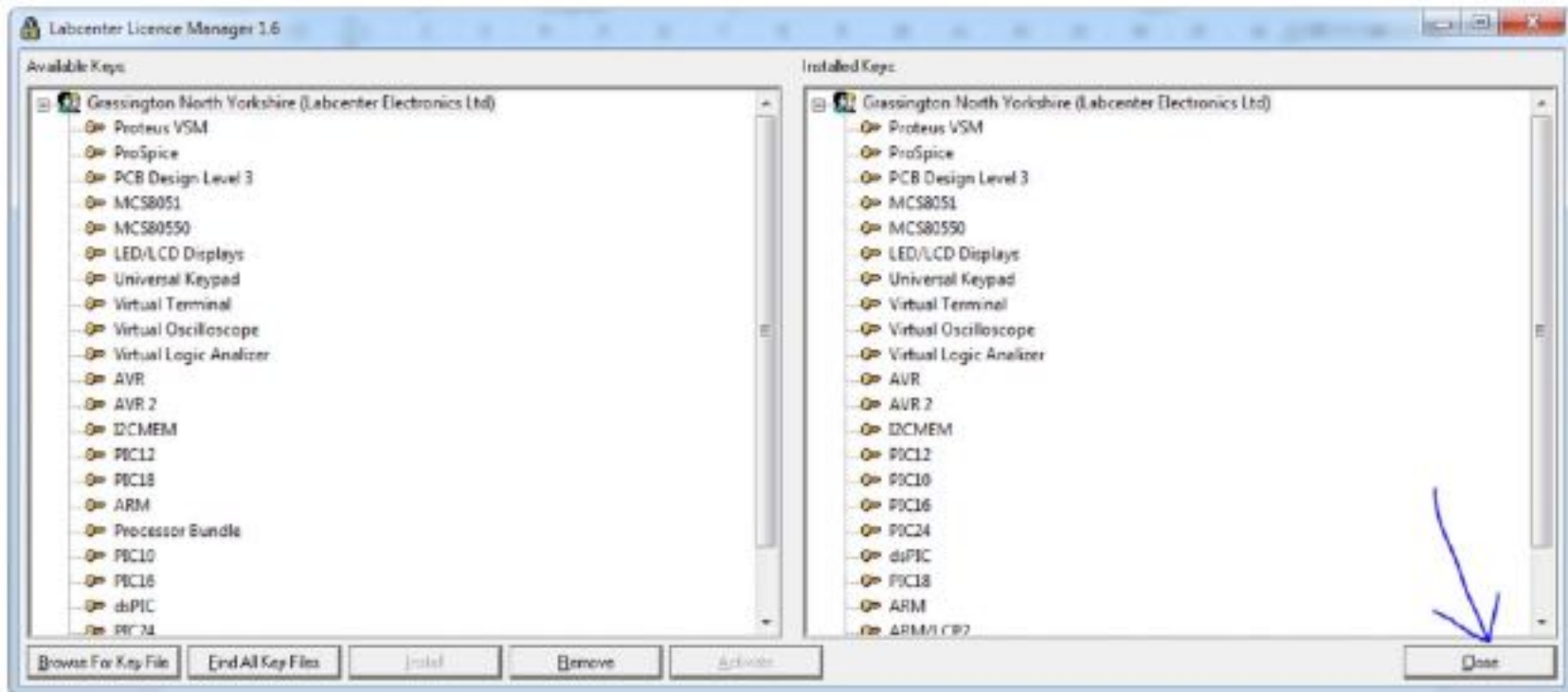
The Electronic Simulators



Chapter 4

The Electronic Simulators

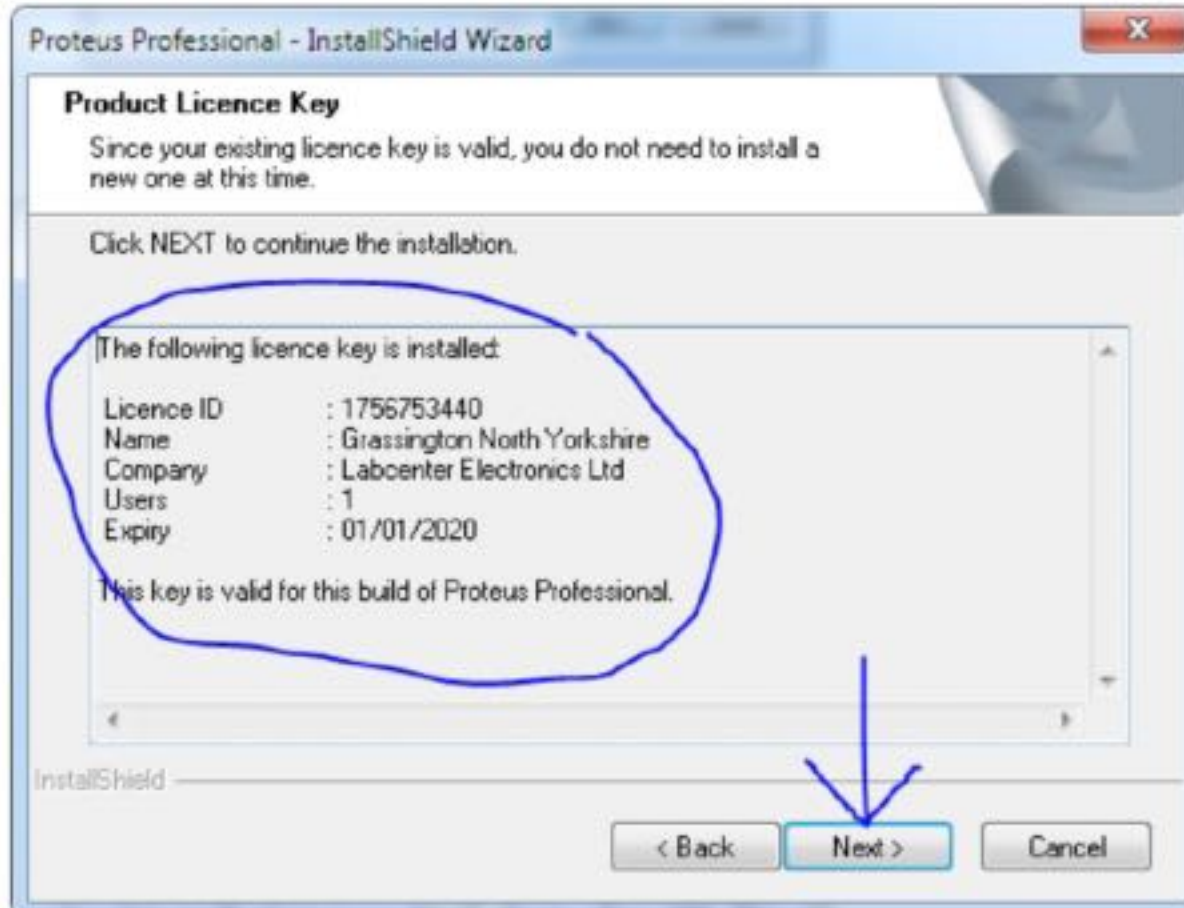
Klik "Close"



Chapter 4

The Electronic Simulators

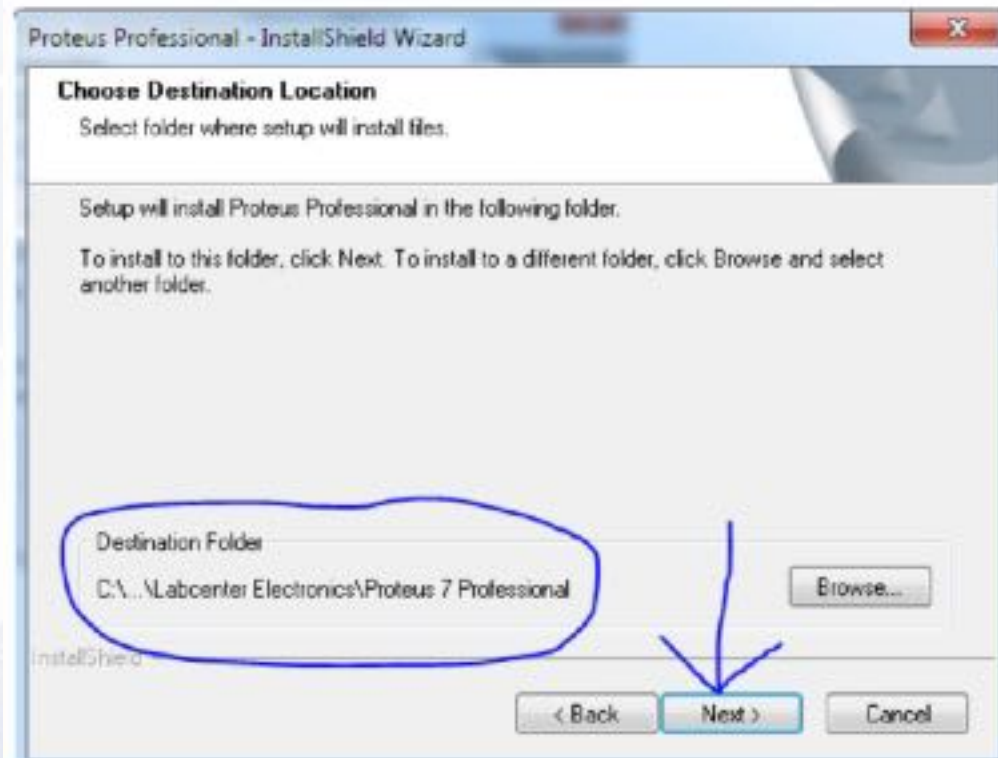
Kembali ke Installasi. Produk Licence sudah terisi. Kemudian Klik "Next"



Chapter 4

The Electronic Simulators

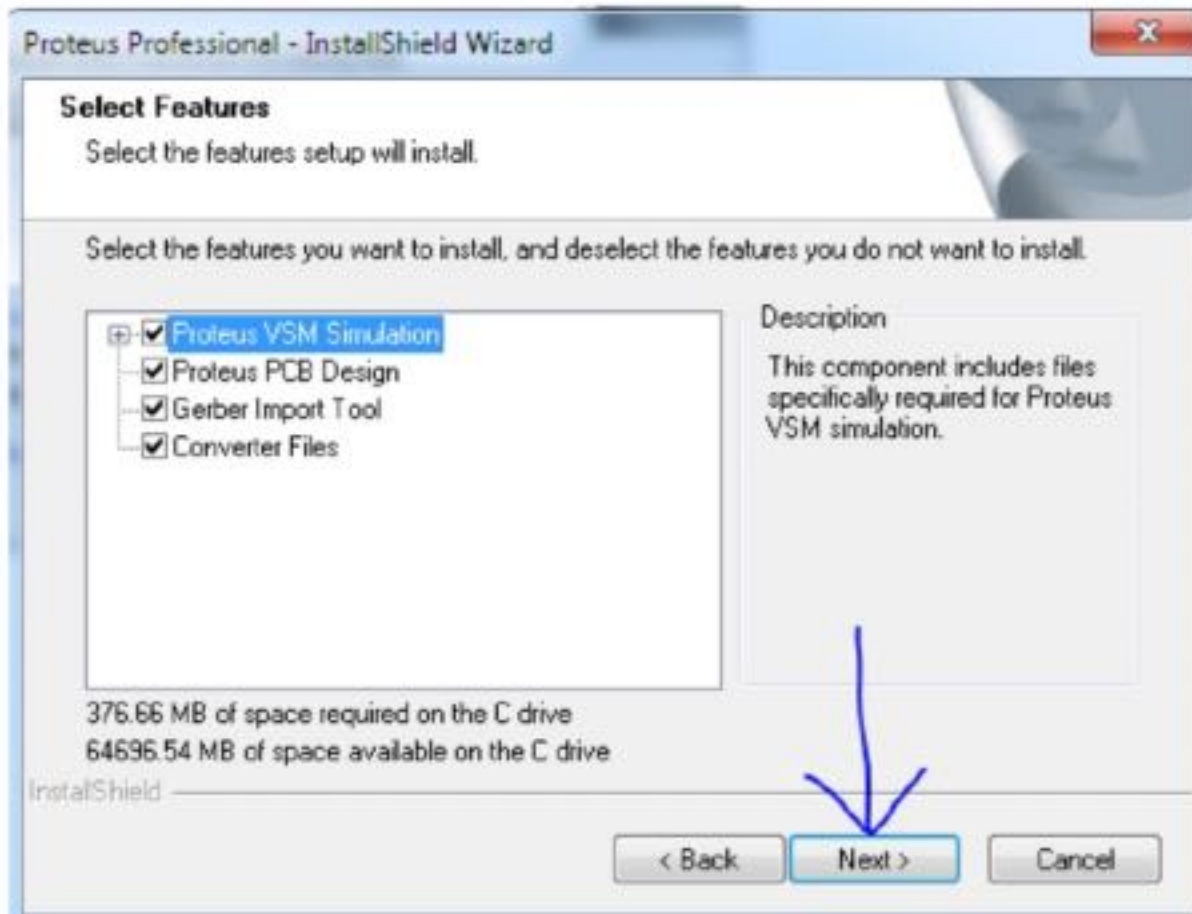
Software Proteus akan disimpan di folder tujuan (**Destination Folder**) . Kemudian Klik "Next"



Chapter 4

The Electronic Simulators

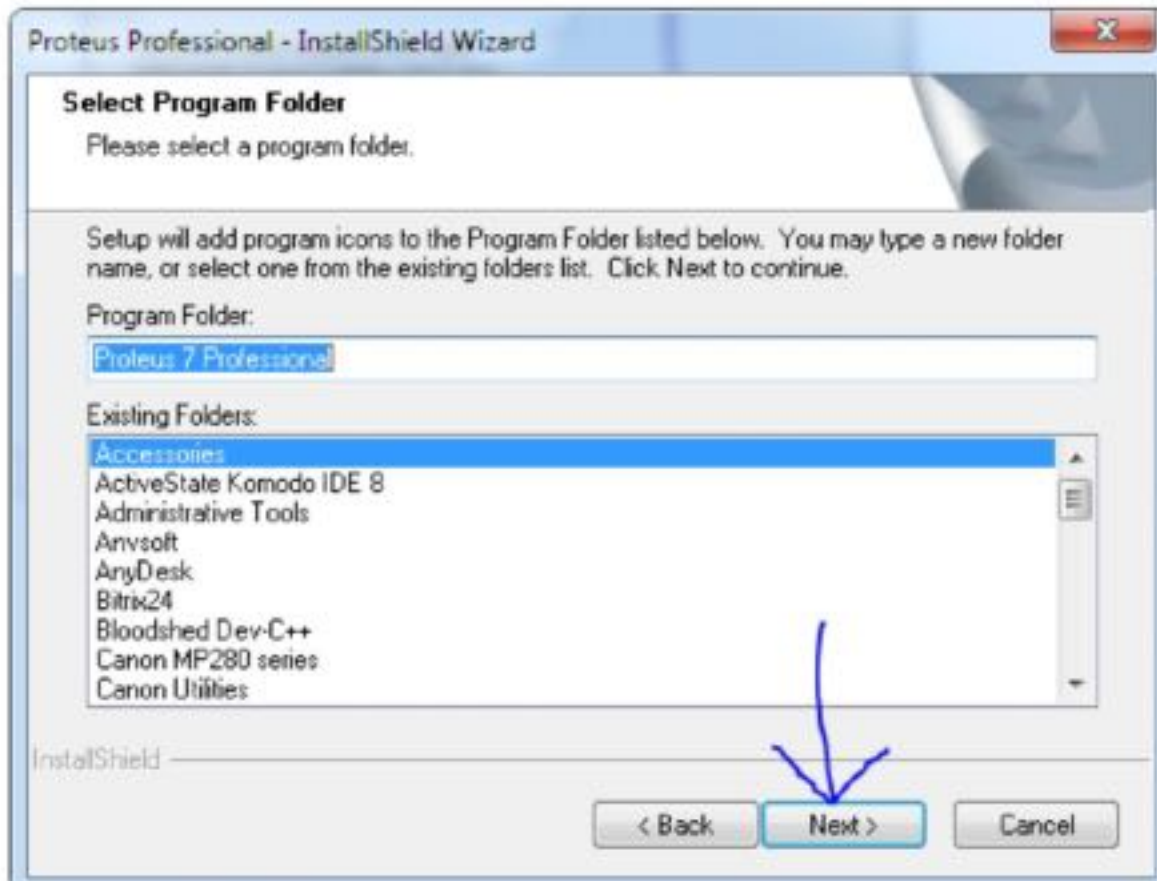
Klik "Next"



Chapter 4

The Electronic Simulators

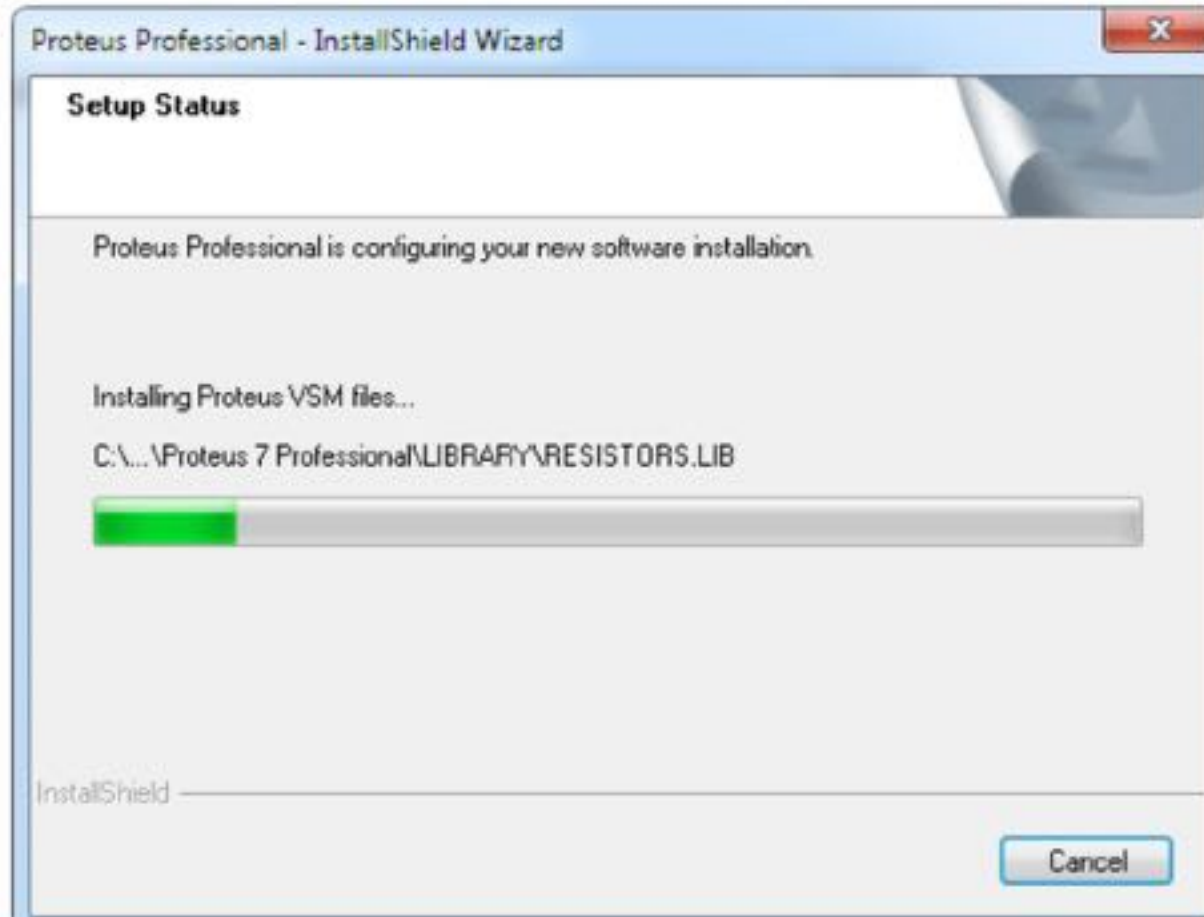
Klik "Next"



Chapter 4

The Electronic Simulators

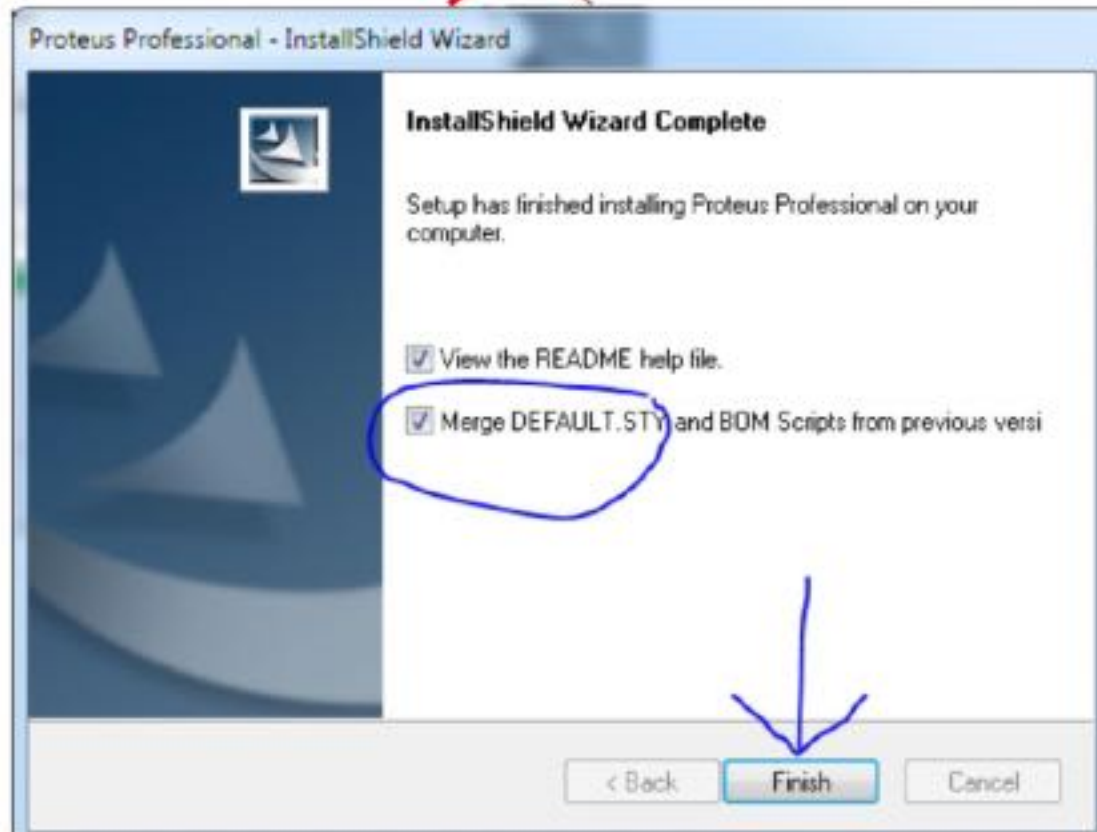
Proses Instalasi... tunggu hingga selesai...



Chapter 4

The Electronic Simulators

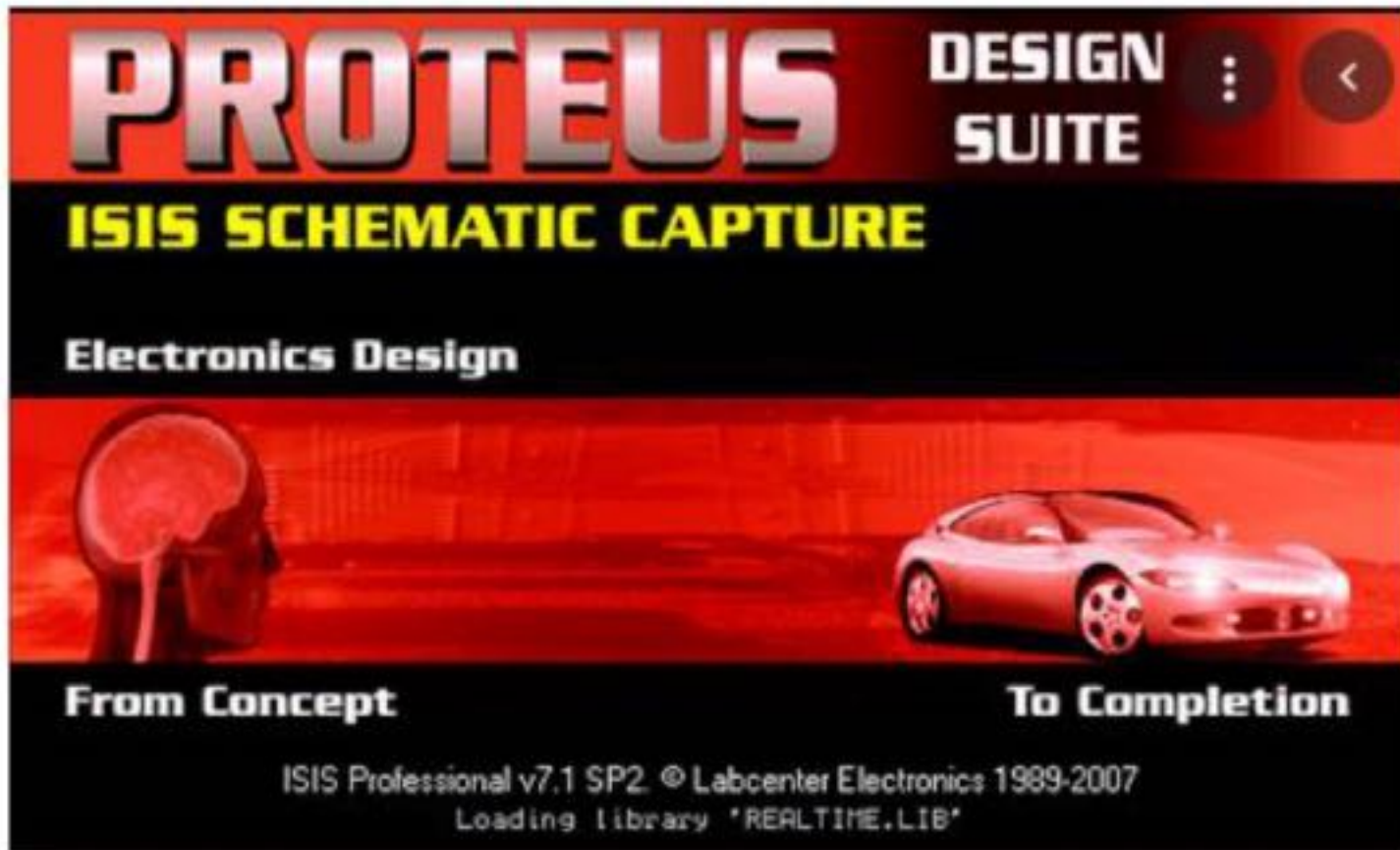
Aktifkan cek list “Merge ~~DEFAULT...~~” (optional)... atau langsung Klik “Finish”



Chapter 4

The Electronic Simulators

Jalankan Program Proteus...



Chapter 4

Tugas Mandiri (teori):

Lakukan percobaan membuat skema sederhana menggunakan software simulator

Tugas Mandiri (prakt):

Lakukan Instalasi **Proteus** Simulator, jelaskan tahapan instalasi.

end

