

Bahan Ajar

Chapter 13



Materi Pembelajaran

Matakuliah :

DESAIN DAN SIMULASI RANGKAIAN ELEKTRONIKA

Kode Matakuliah : SKO 21425

Prodi : SISTEM KOMPUTER

Dosen Pengampu Matakuliah:

Bayu Nugroho, S.Kom., M.Eng

Chapter 13

Tables of Content

PCB

Single Layer

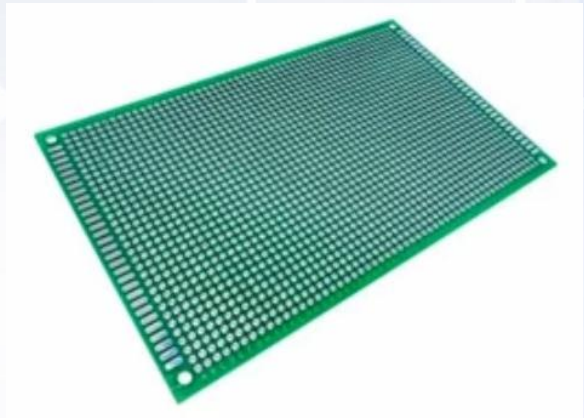
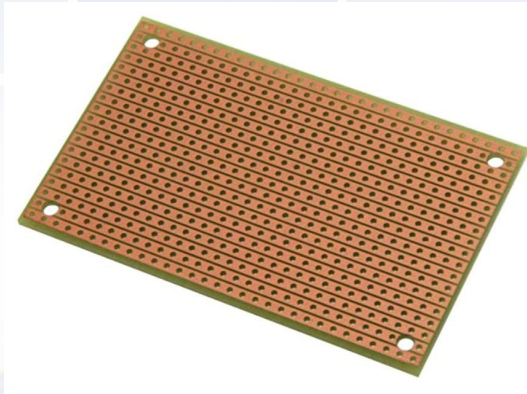
PCB Layout Designing

Tugas Mandiri



PCB

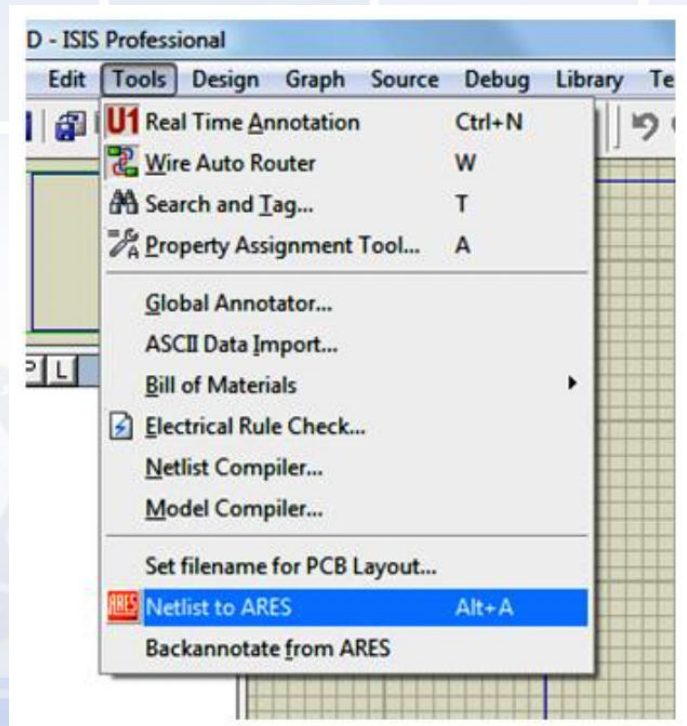
Printed circuit boards (PCBs) are the foundational building block of most modern electronic devices.



Chapter 13

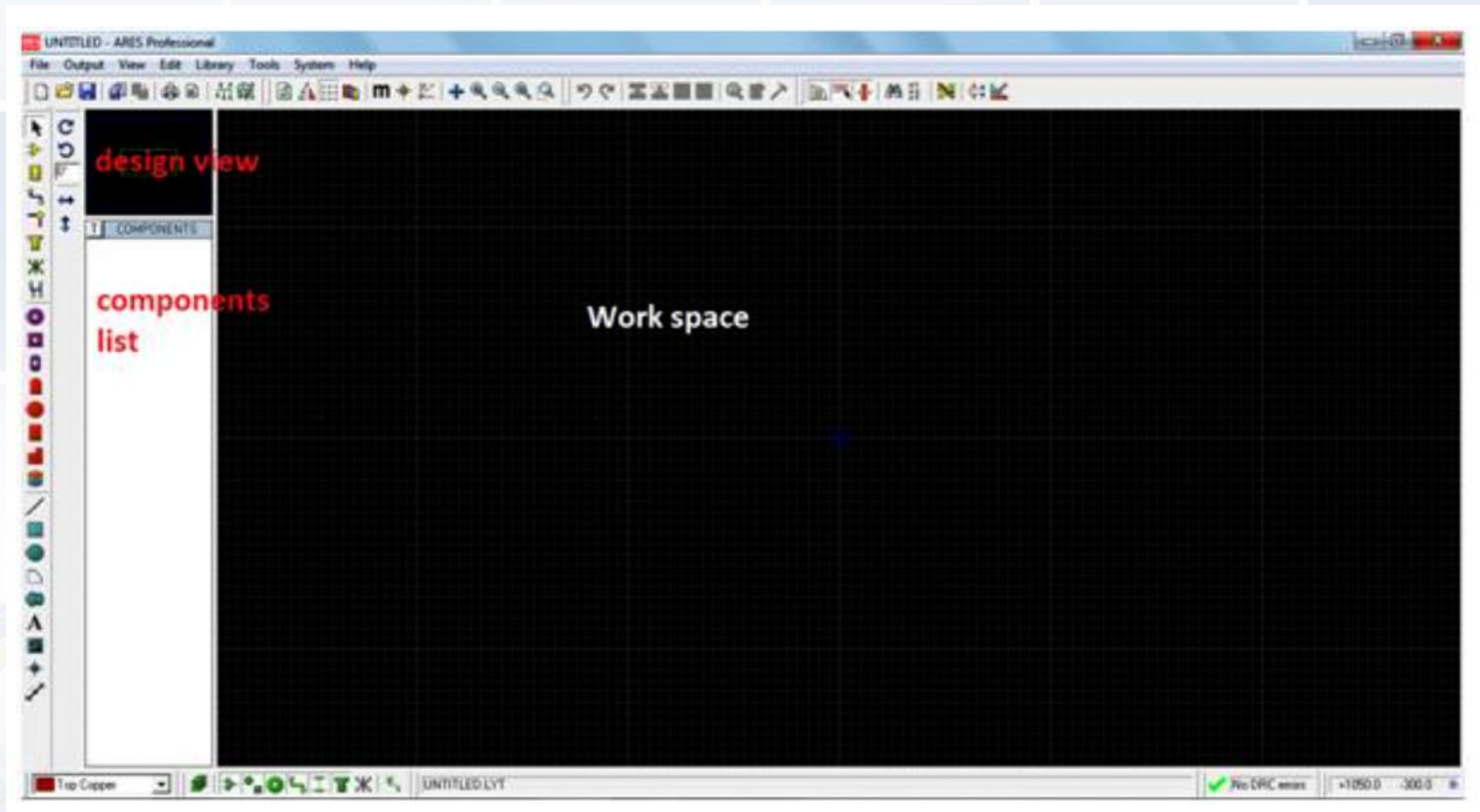
PCB

Proteus has an integrated ARES designing suit. We can use this to develop our PCB. First you will open Proteus and select 'Tools' and then select 'netlist to Ares'



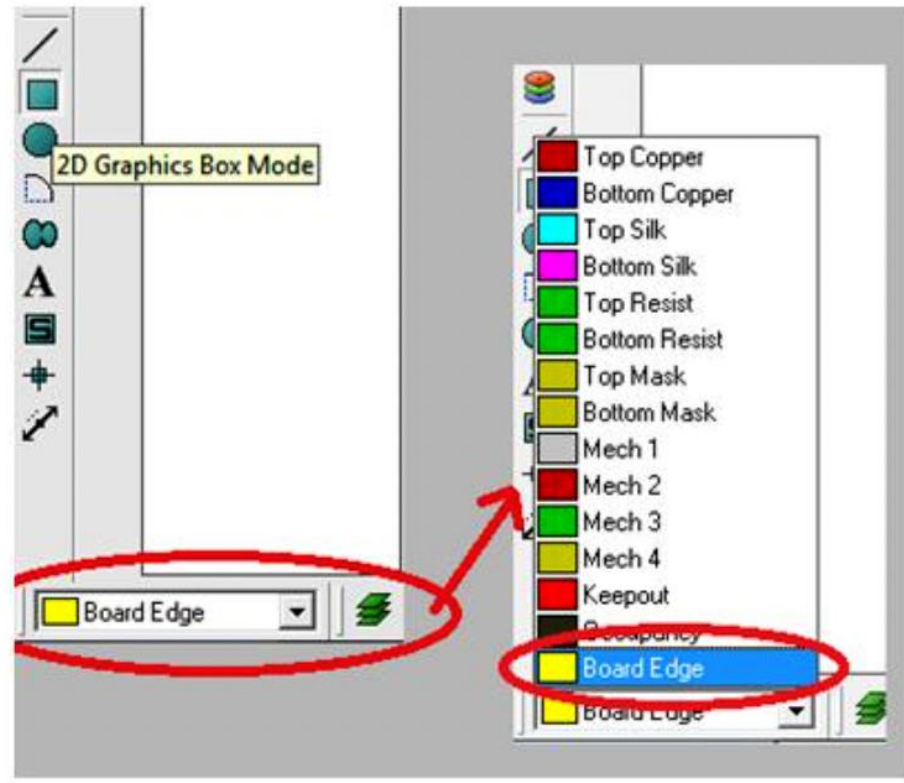
Chapter 13

PCB



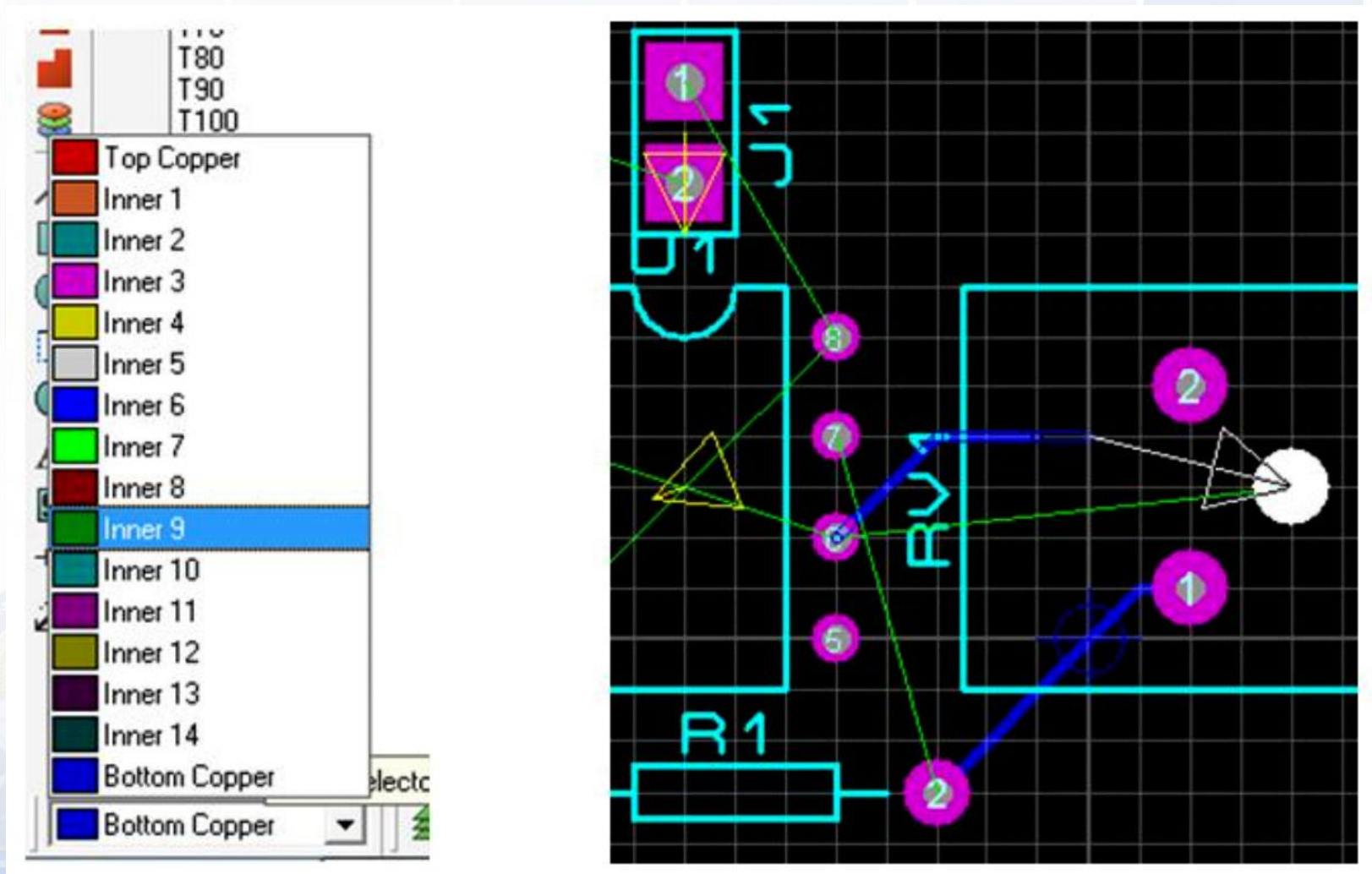
PCB

'2D Graphics Box Mode'



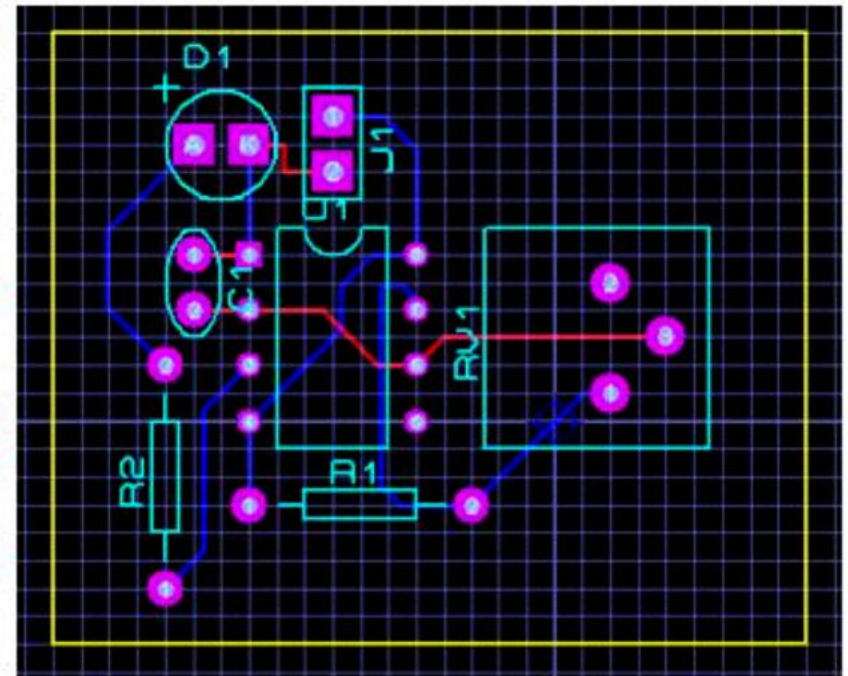
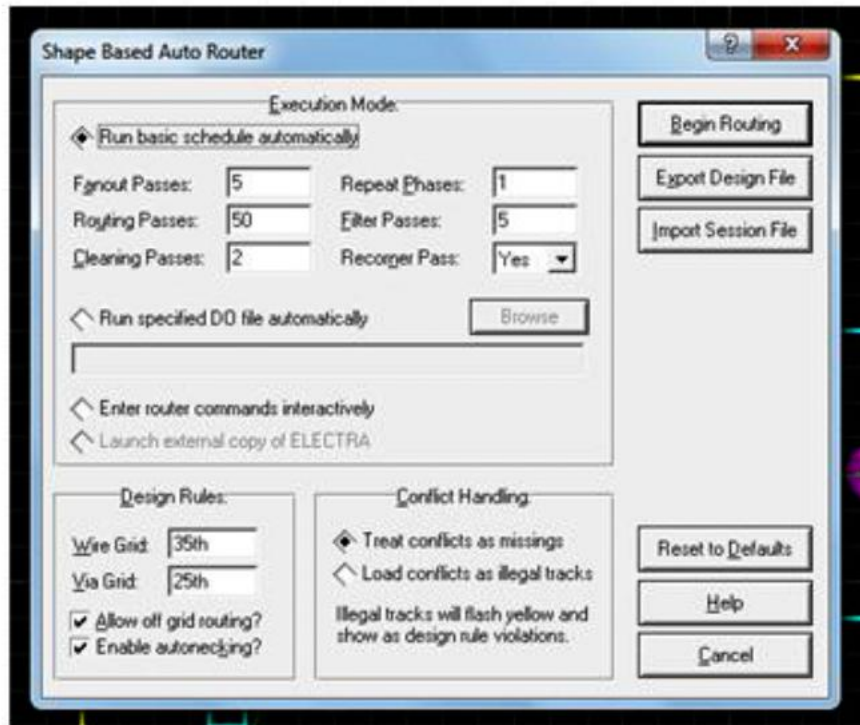
Chapter 13

PCB

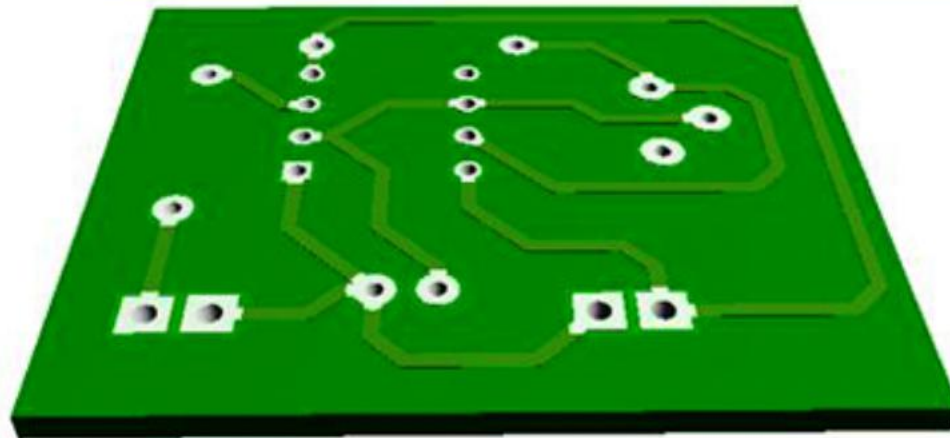
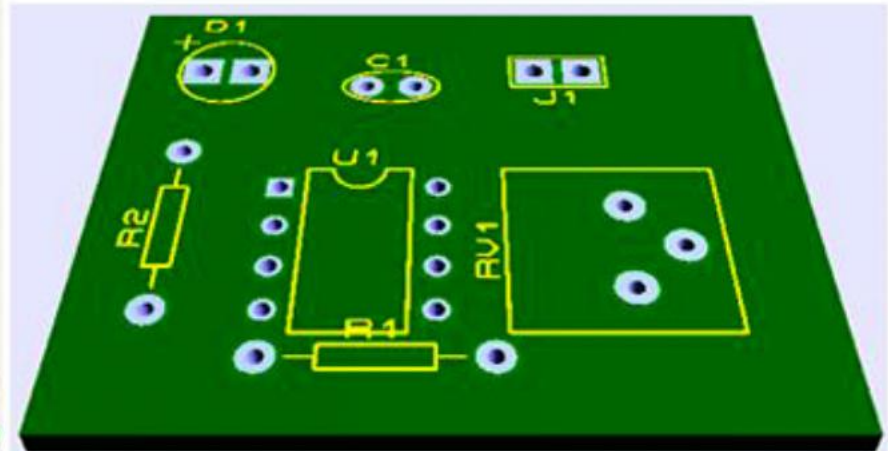
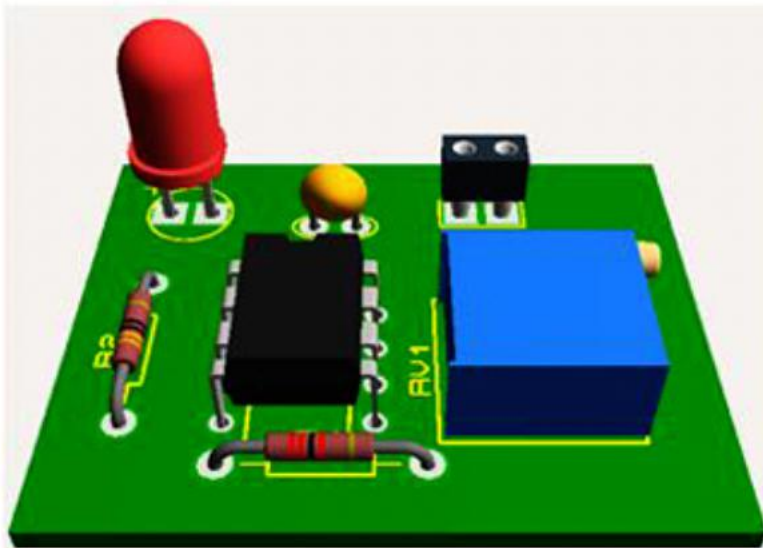


Chapter 13

PCB



3D visualization



Tugas Mandiri (teori):

Lakukan pembuatan skema rangkaian Power Supply Unit menggunakan software simulator.

Tugas Mandiri (prakt):

Lakukan pembuatan 3D Power Supply menggunakan software simulator dan jelaskan hasil simulasinya.

end

