

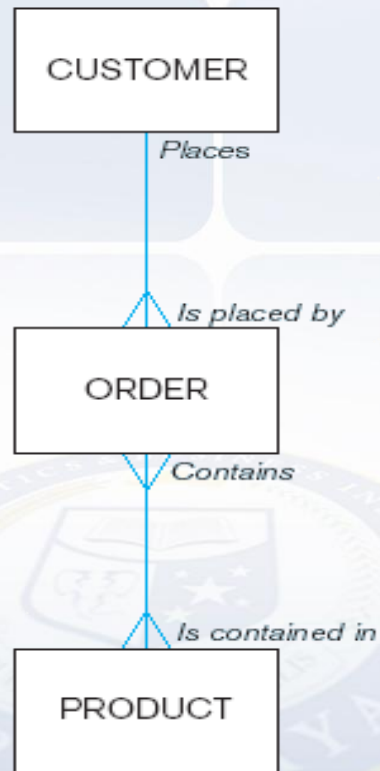
Suplemen Materi Entity Relationship Diagram



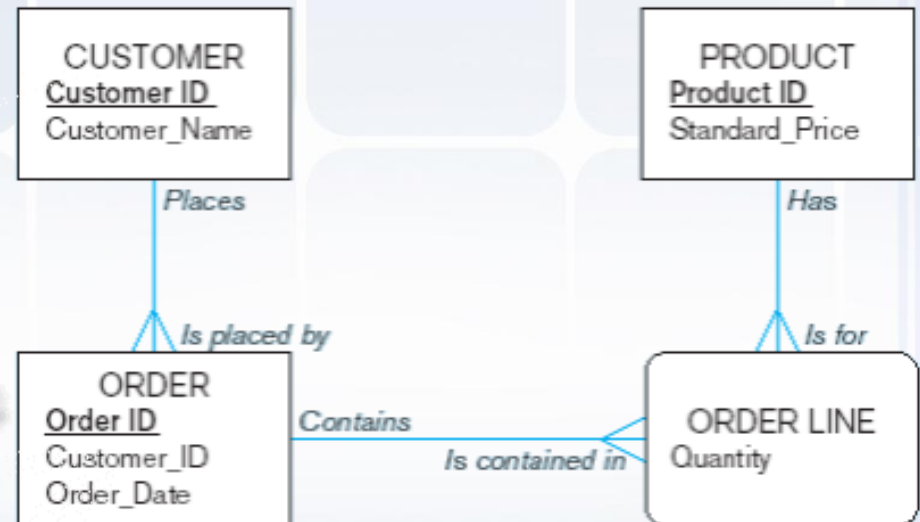
Dr. Sutedi, S.Kom., M.T.I

Sudut Pandang Dalam Memodelkan Data

Enterprise Data Model



Project-Level Data Model



Model *Entity-Relationship*

Entitas

Tipe entitas

Instance entitas



Model *Entity-Relationship*

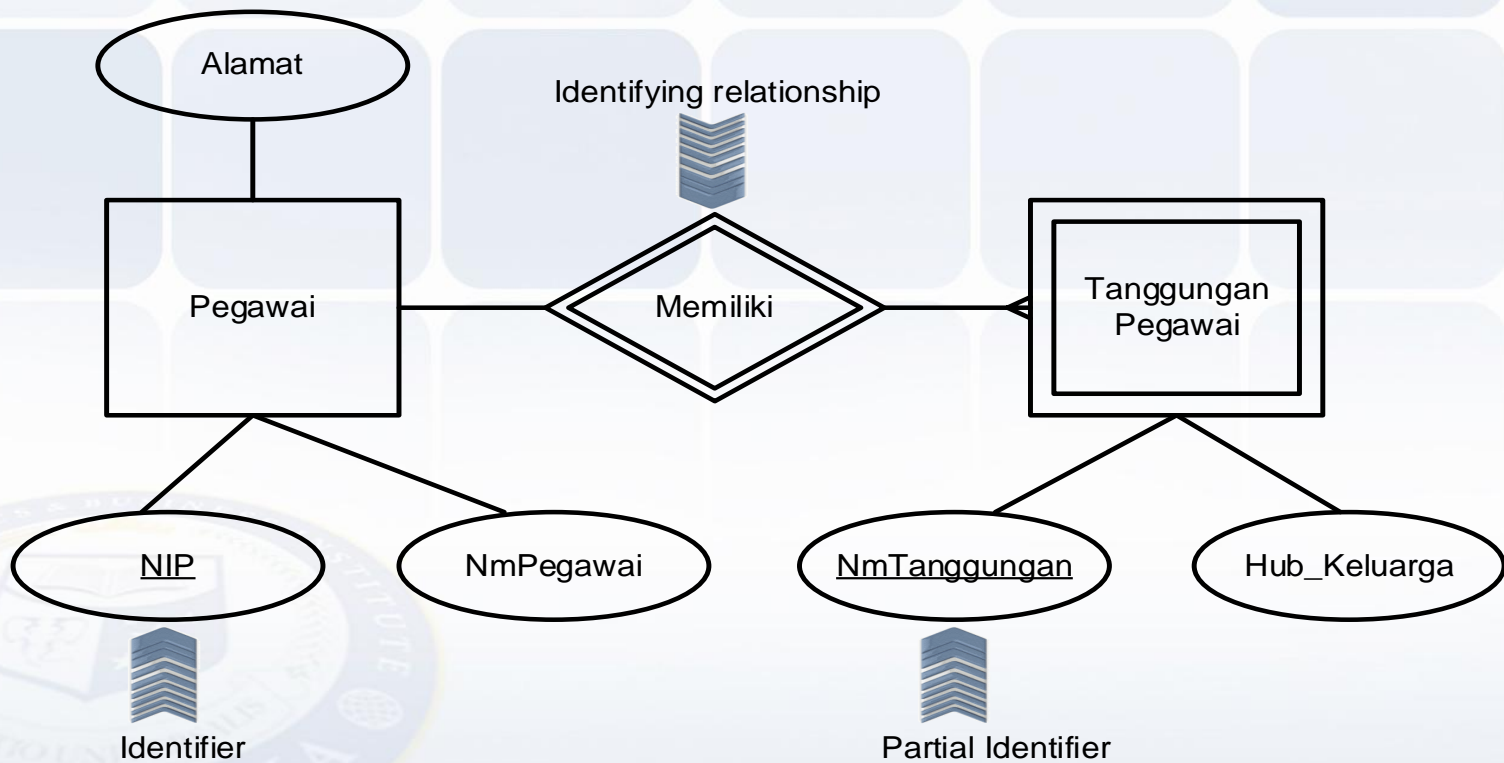
Strong Entity

Weak Entity

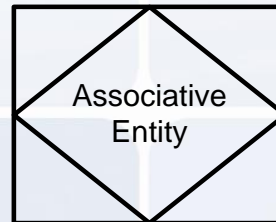


Model *Entity-Relationship*

Contoh *Strong Entity* dan *Weak Entity*:

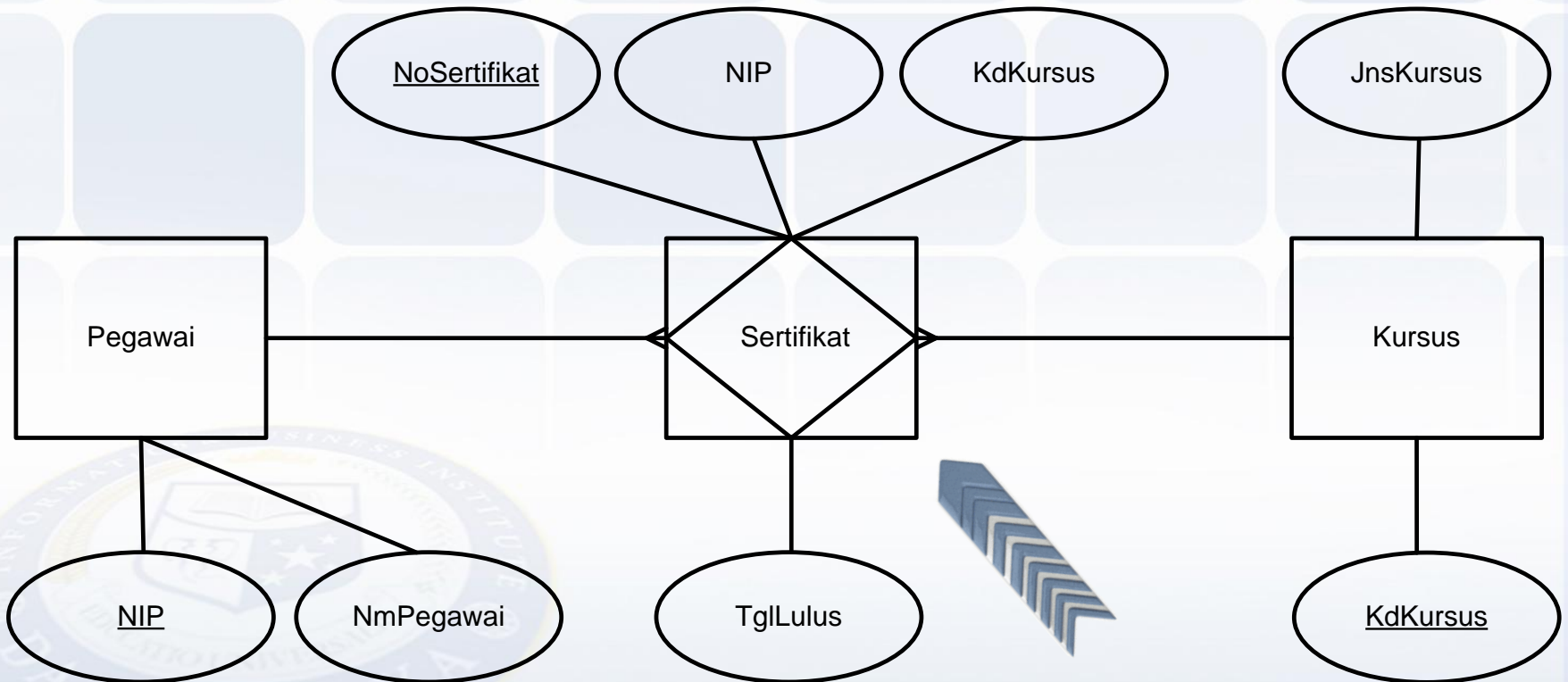


Model *Entity-Relationship*



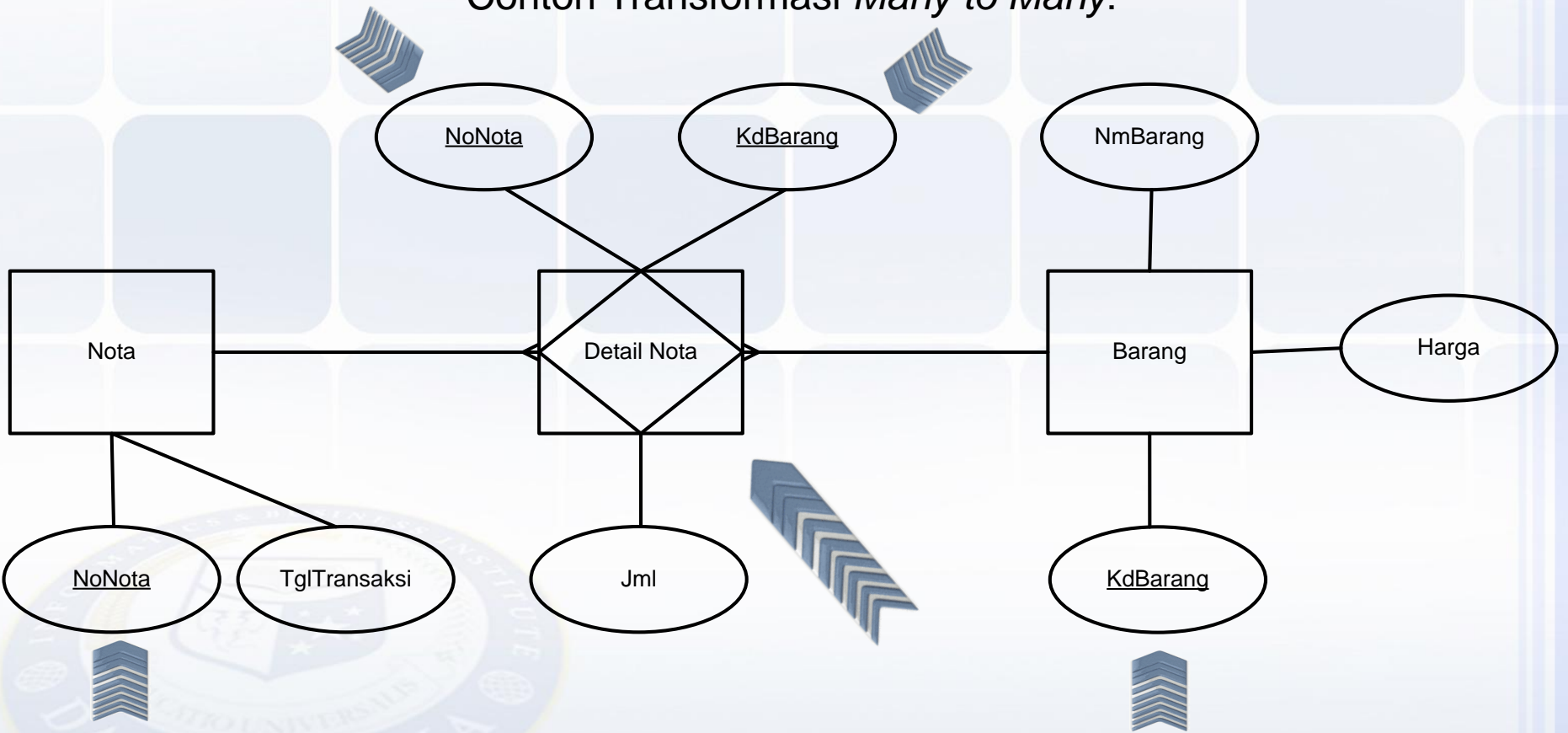
Model *Entity-Relationship*

Contoh *Associative Entity* :



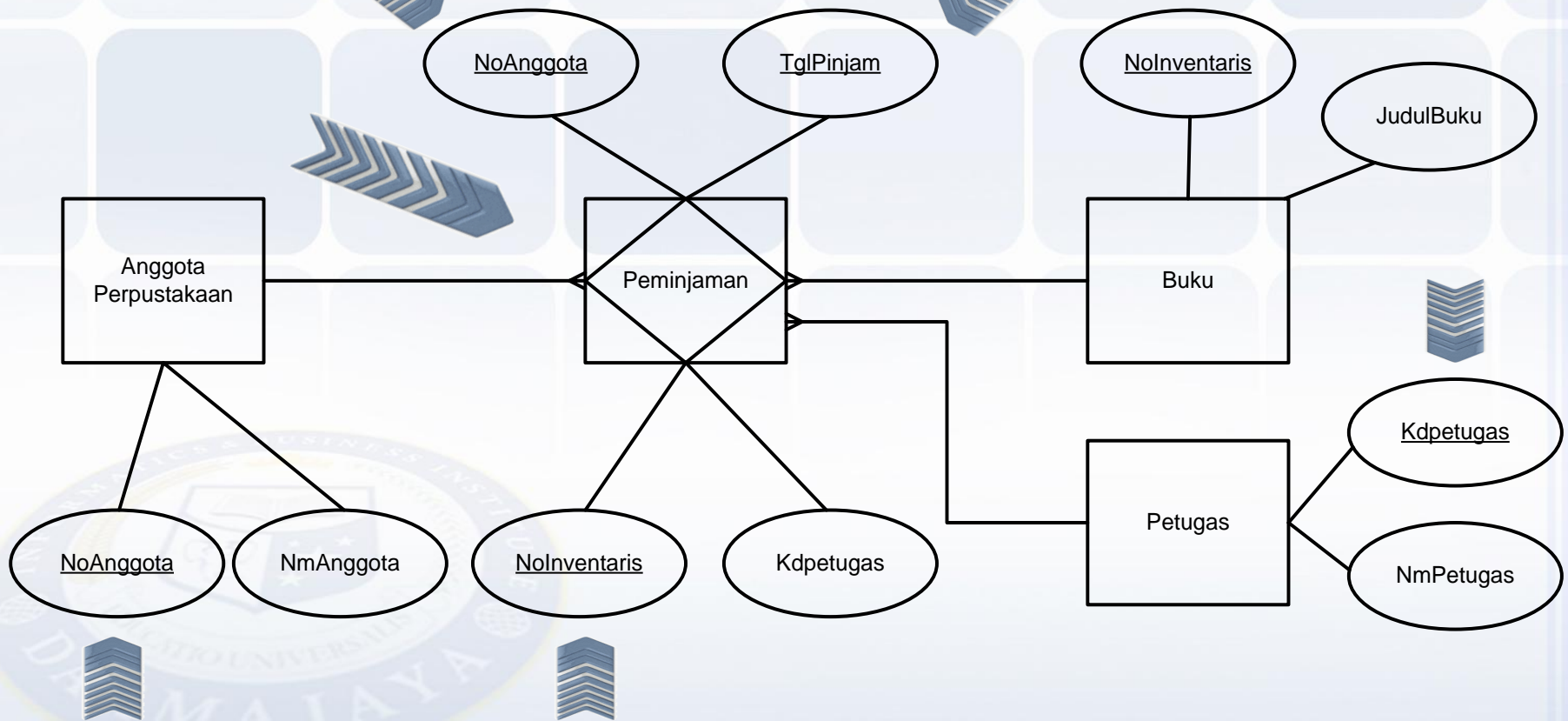
Model *Entity-Relationship*

Contoh Transformasi *Many to Many*:



Model *Entity-Relationship*

Contoh Transformasi *Ternary Degree*:



Model *Entity-Relationship*

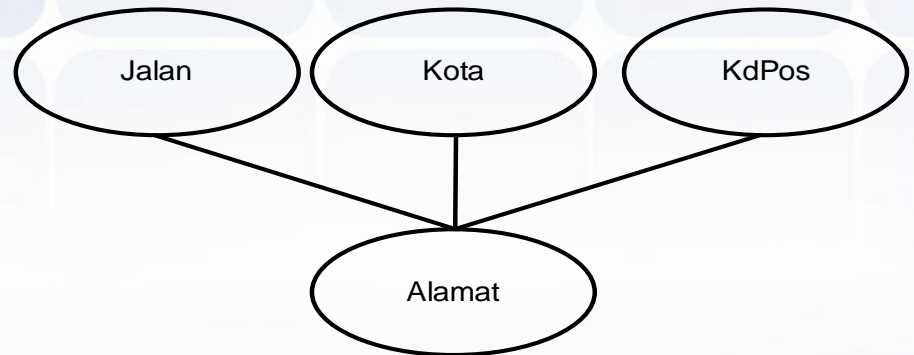
Atribut

Sederhana

Komposit



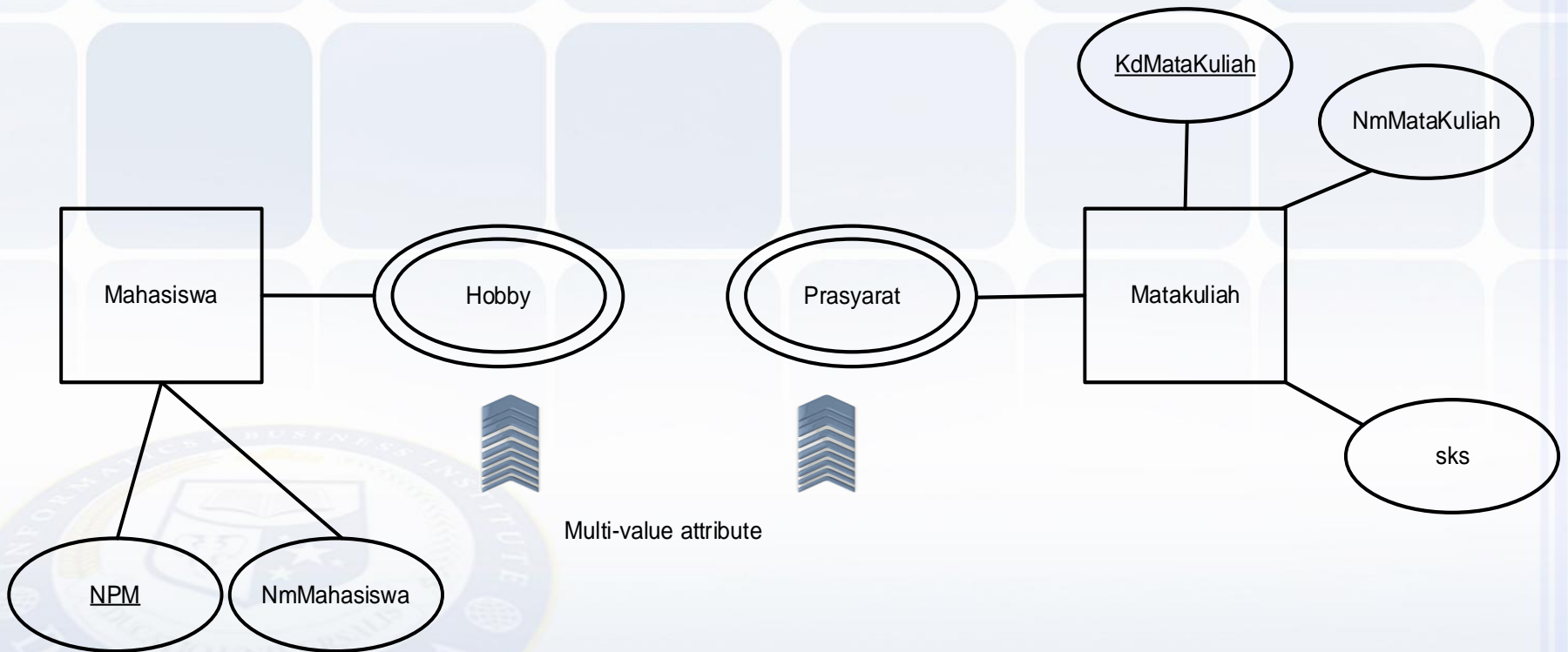
Atribut sederhana



Atribut komposit

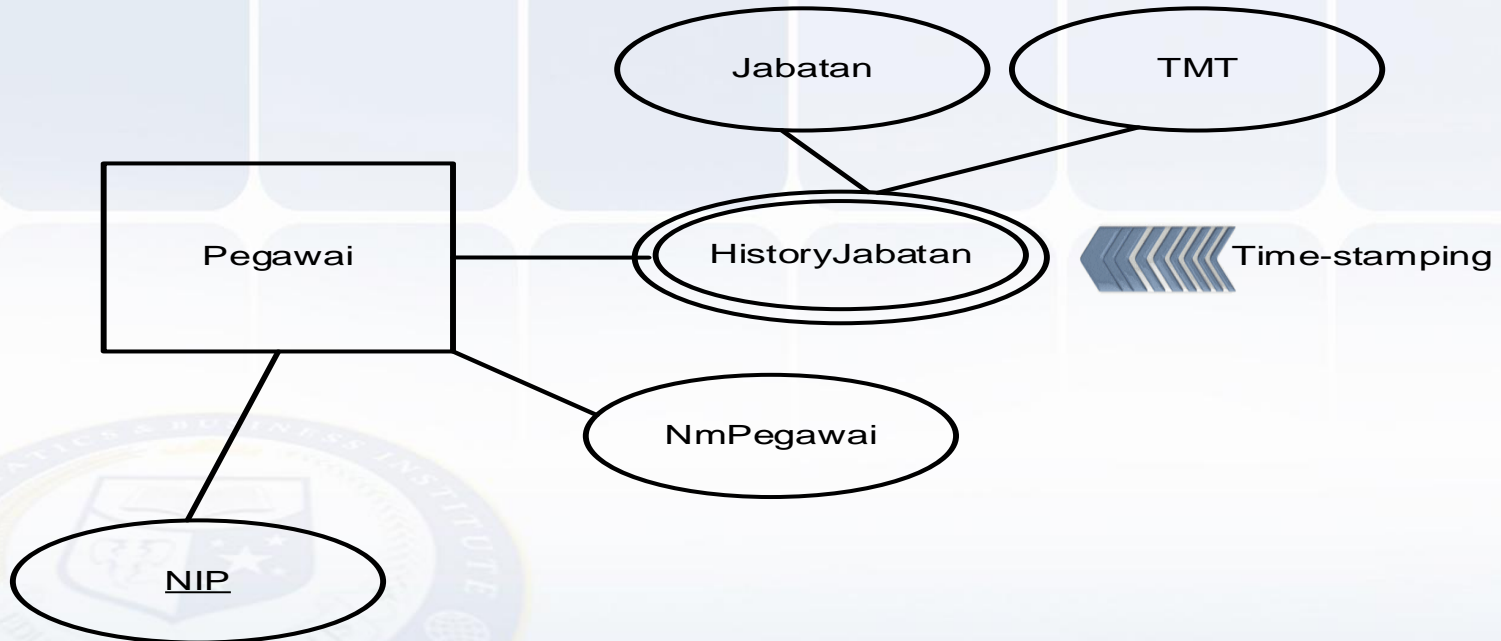
Model *Entity-Relationship*

Atribut *Multi-Value*



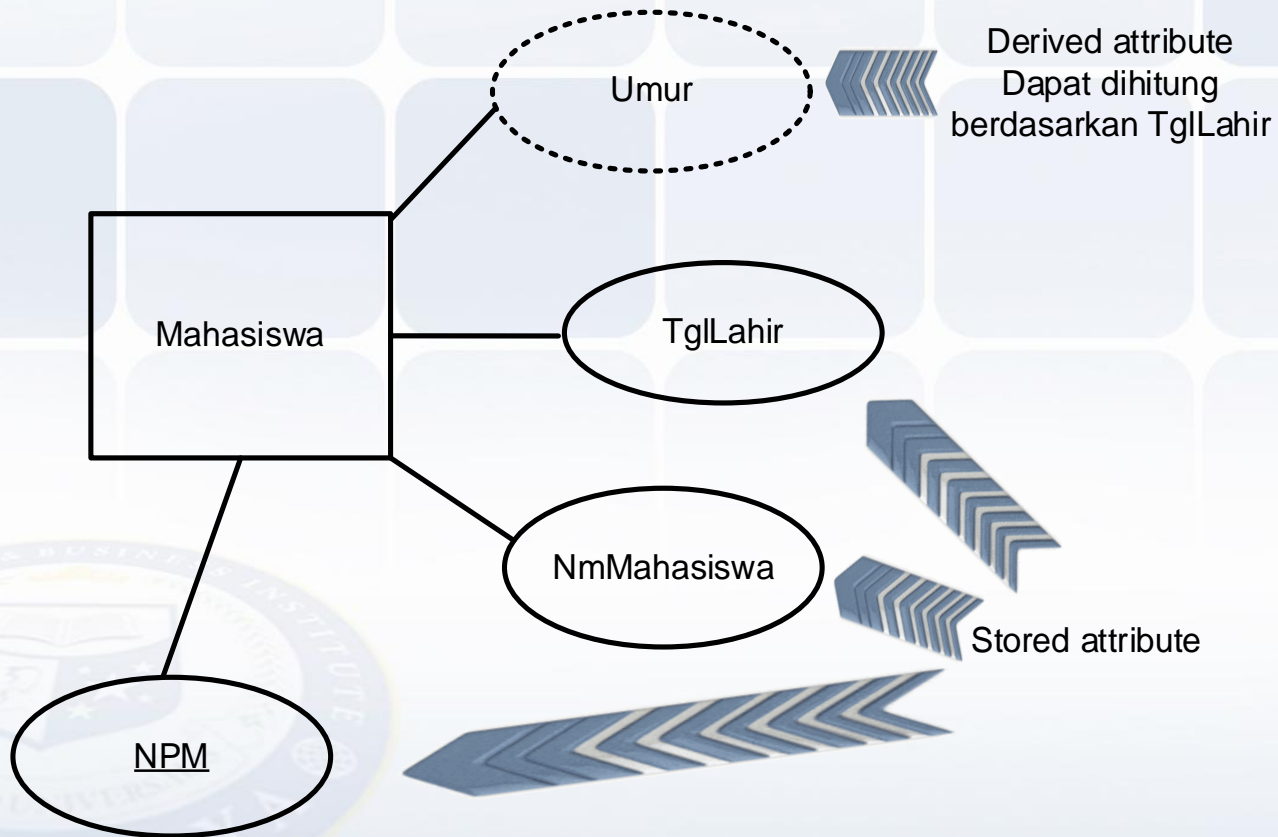
Model *Entity-Relationship*

Atribut Komposit dan *Multi-Value*



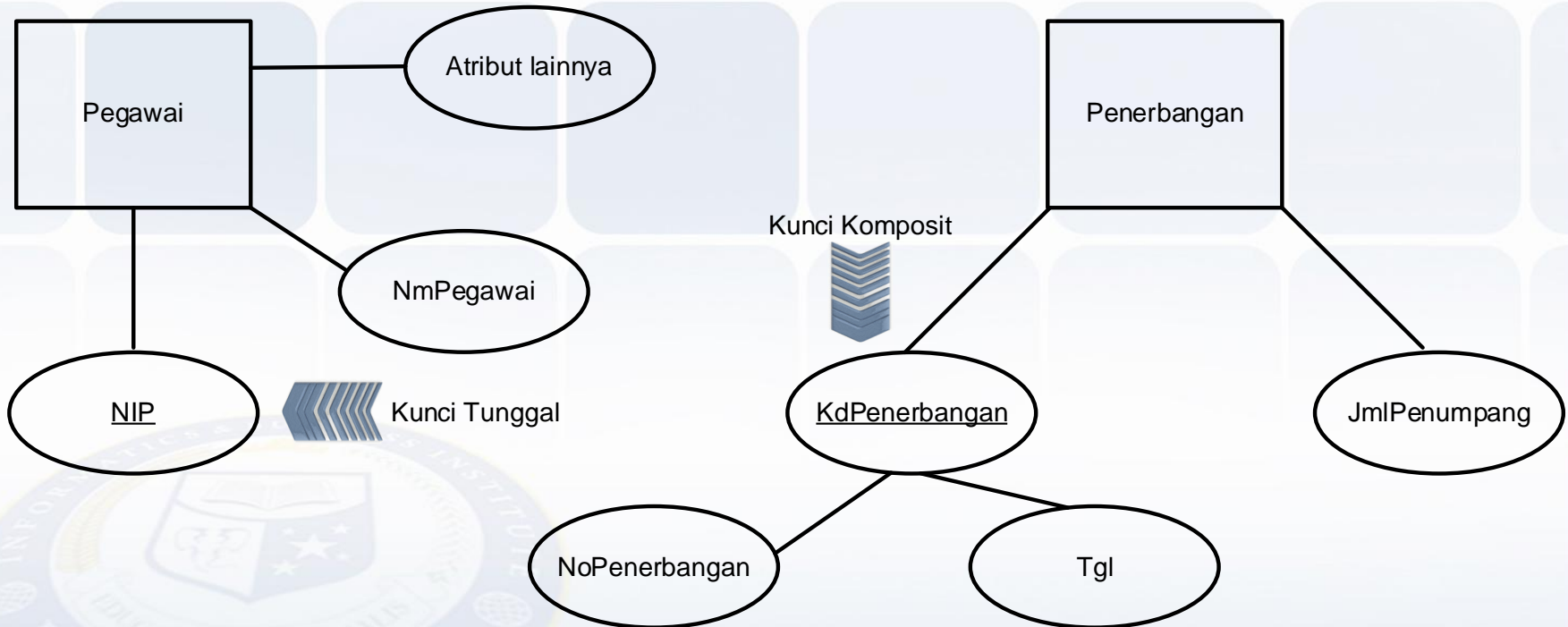
Model *Entity-Relationship*

Stored Attribute dan Derived Attribute



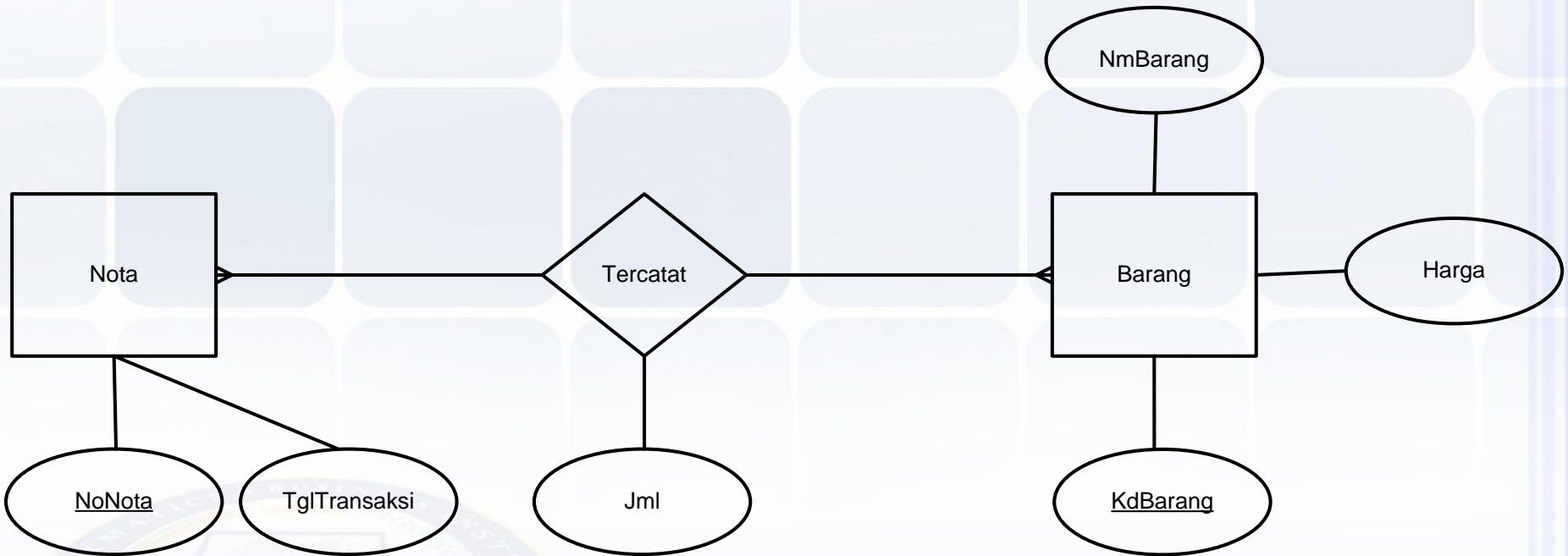
Model *Entity-Relationship*

Atribut Kunci Tunggal dan Kunci Komposit



Model *Entity-Relationship*

Atribut Relasional




atribut relasional

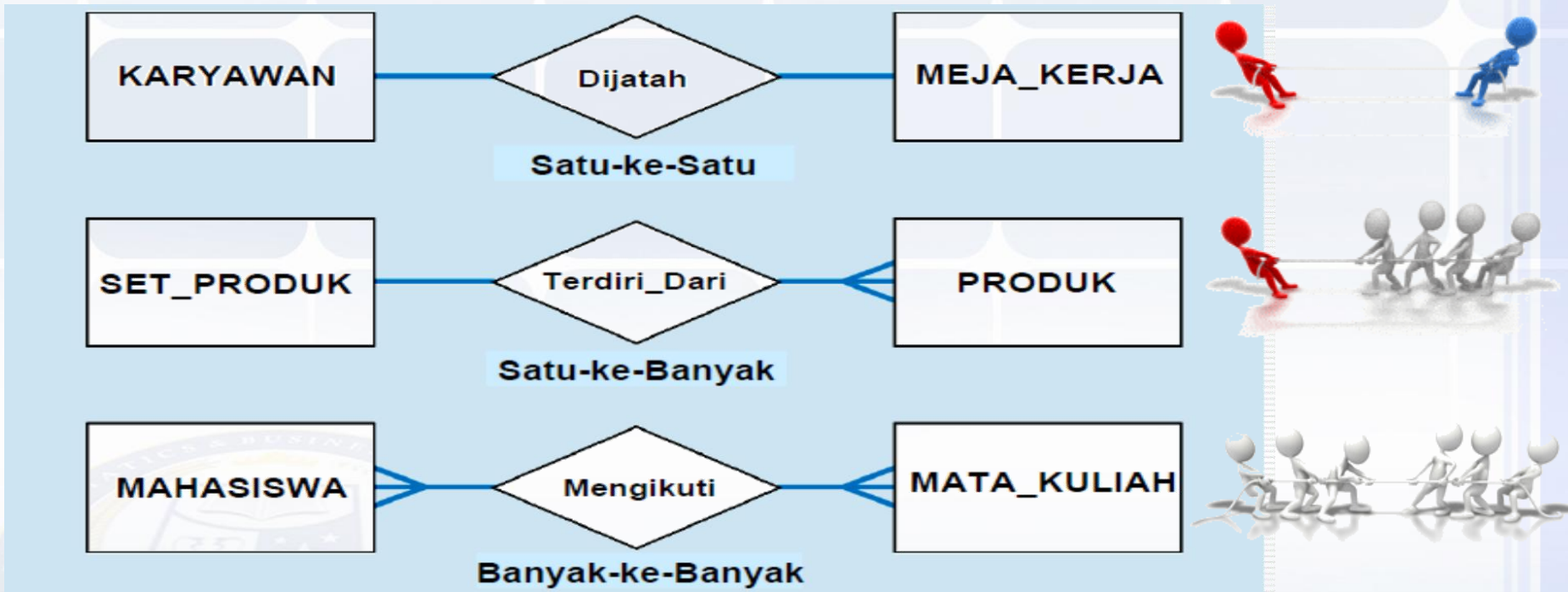
Model *Entity-Relationship*

Derajat Relasional



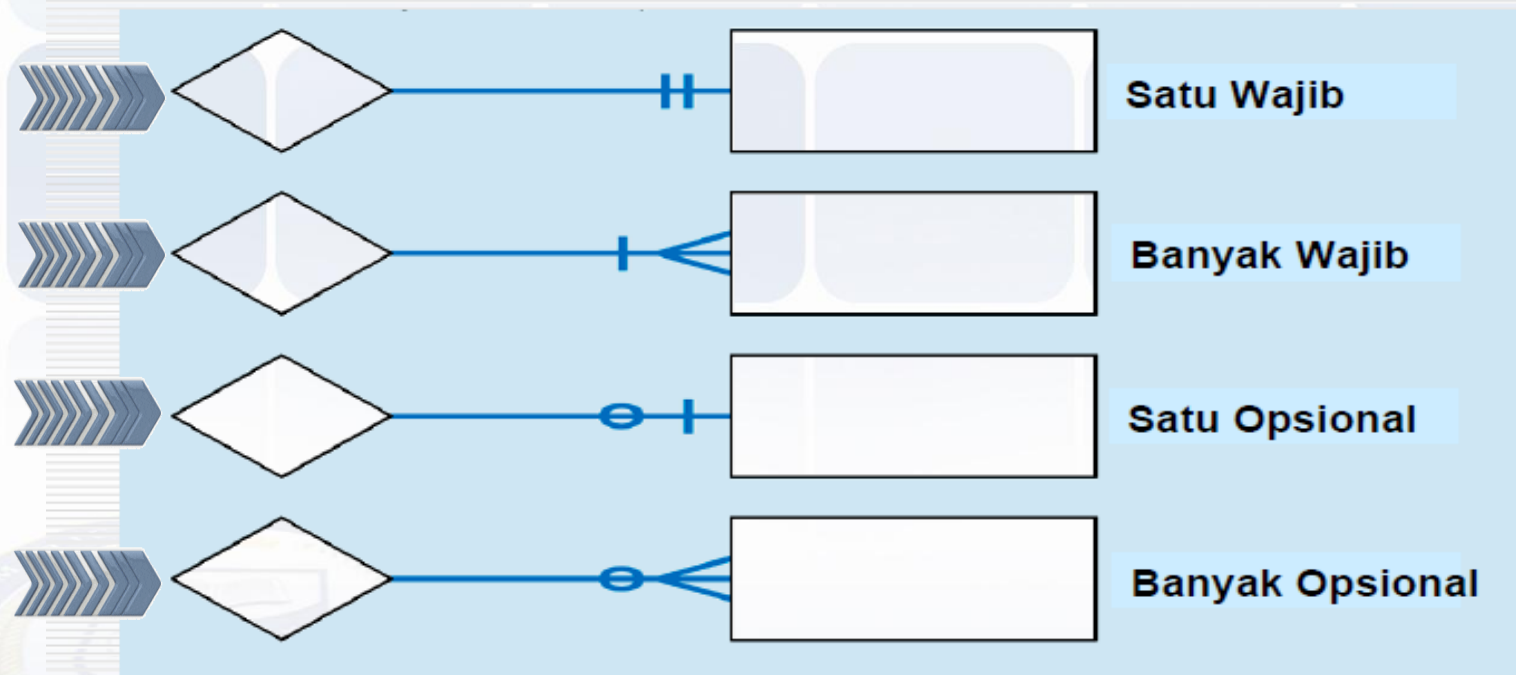
Model *Entity-Relationship*

Kardinalitas Relasional



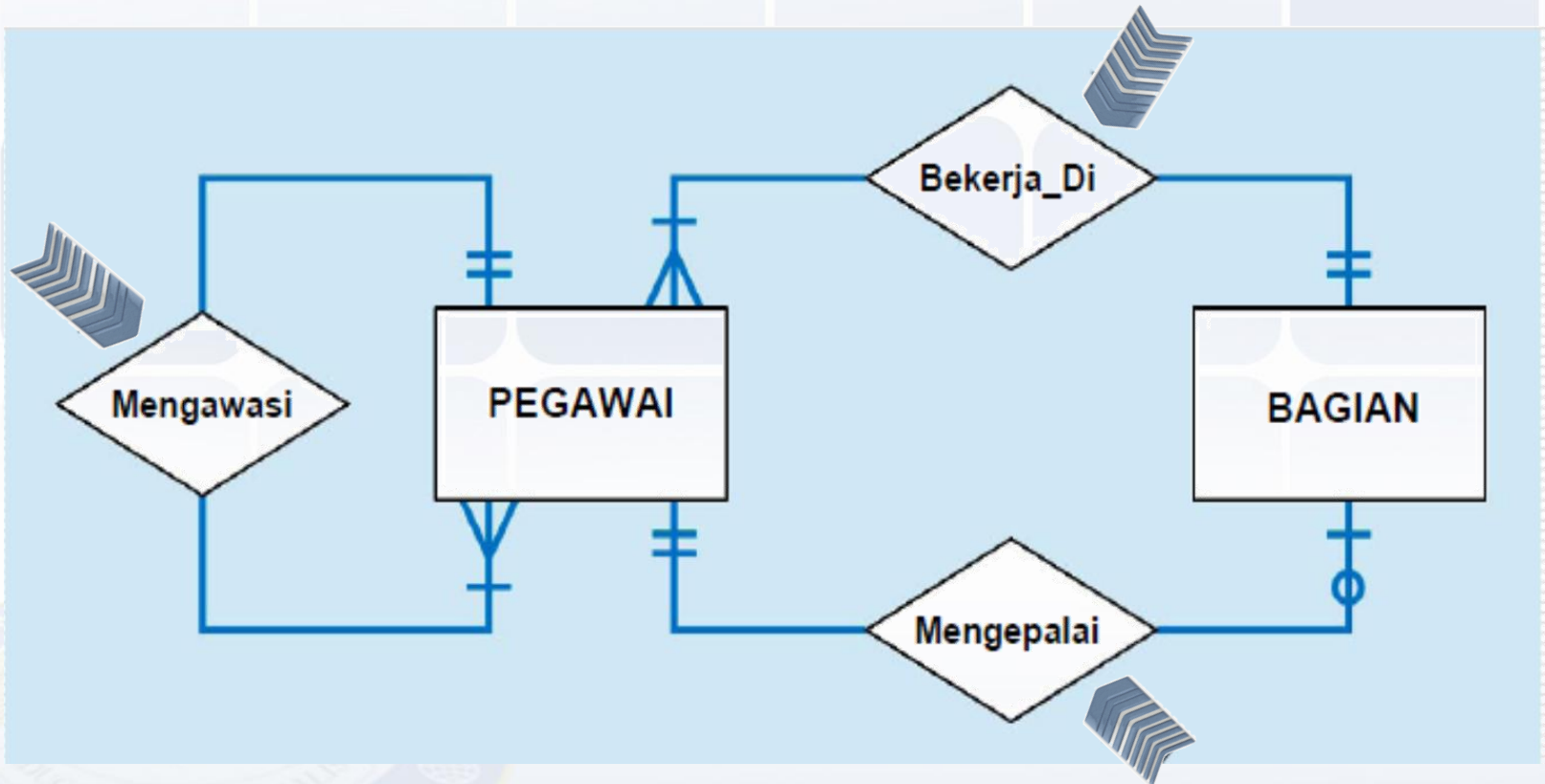
Model *Entity-Relationship*

Notasi Konstrain Relasional



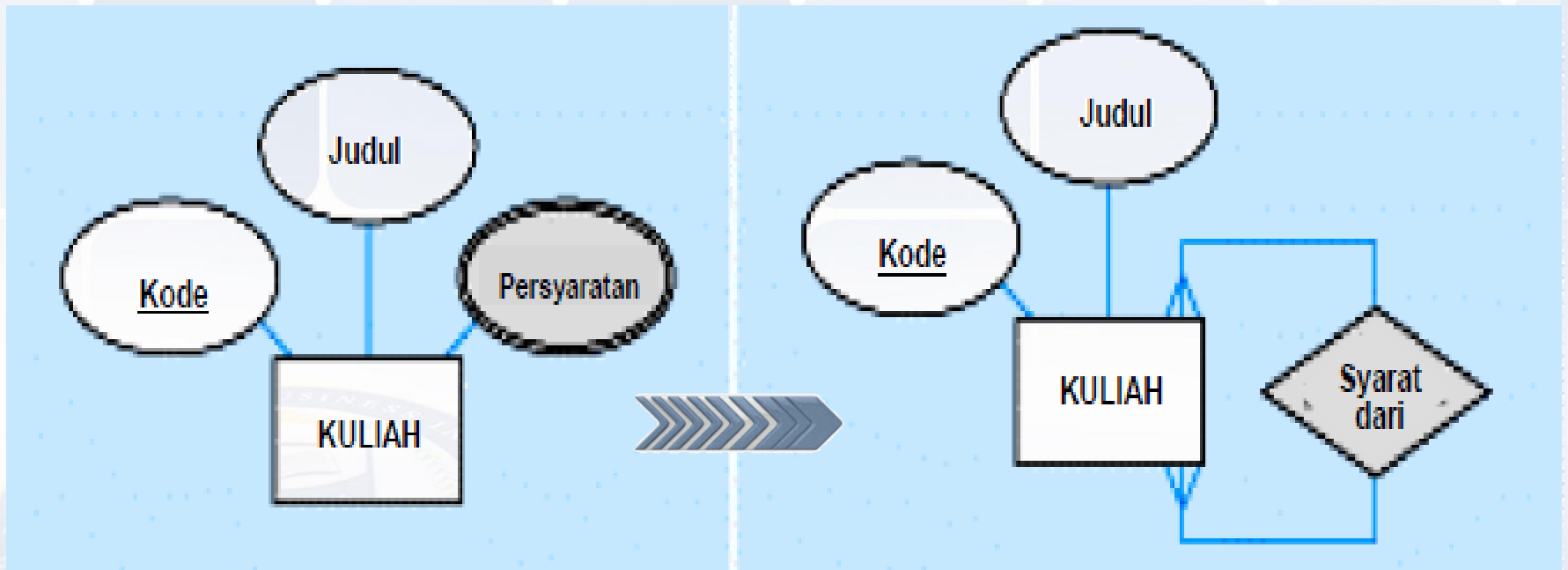
Model *Entity-Relationship*

Relasional Majemuk



Model *Entity-Relationship*

Transformasi Atribut *Multivalued* ke Relasional



THANK YOU

Sampai jumpa di sesi berikutnya

