



Materi Pembelajaran

Matakuliah :

**DESAIN DAN SIMULASI RANGKAIAN
ELEKTRONIKA**

Kode Matakuliah : SKO 21425

Prodi : SISTEM KOMPUTER

Dosen Pengampu Matakuliah:

Bayu Nugroho, S.Kom., M.Eng

Chapter 14

Tables of Content

PCB

PCB Layout Printing

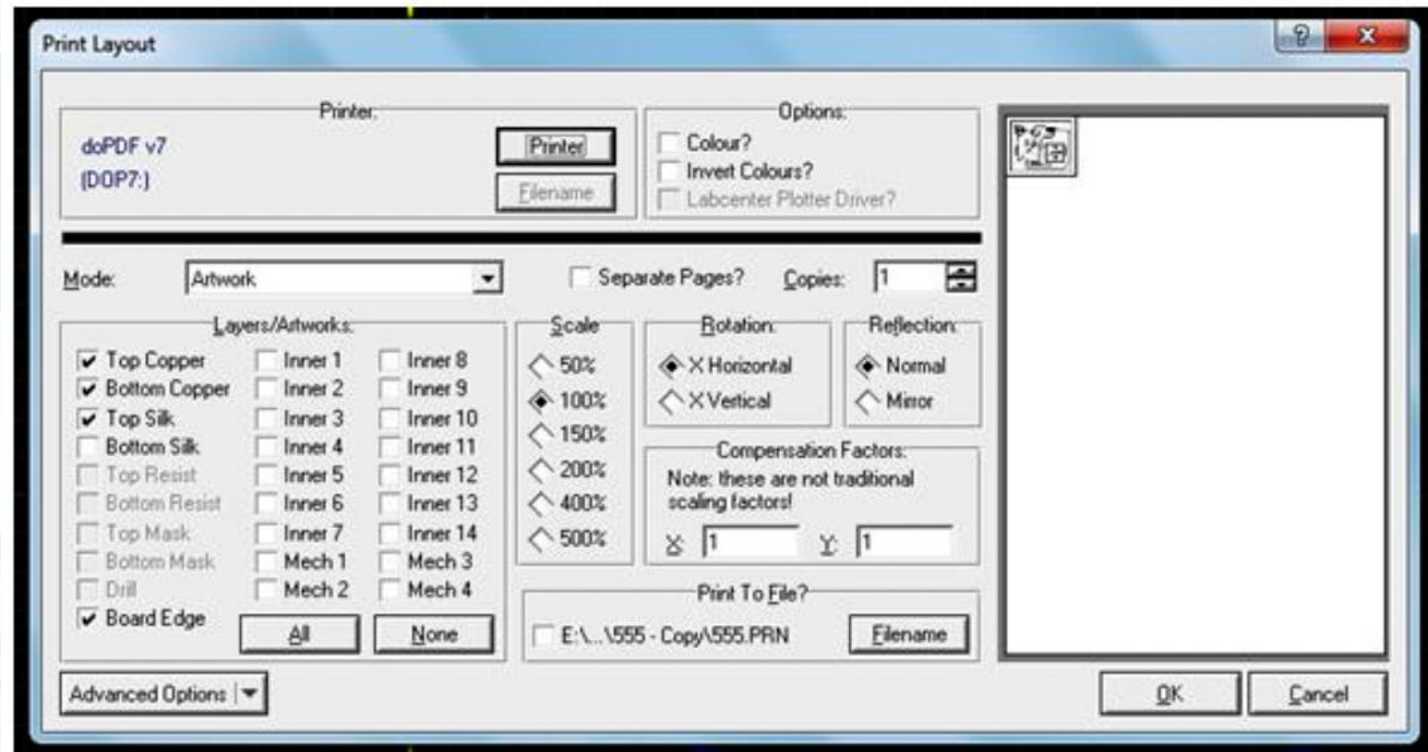
Printout PCB

Tugas Mandiri



Chapter 14

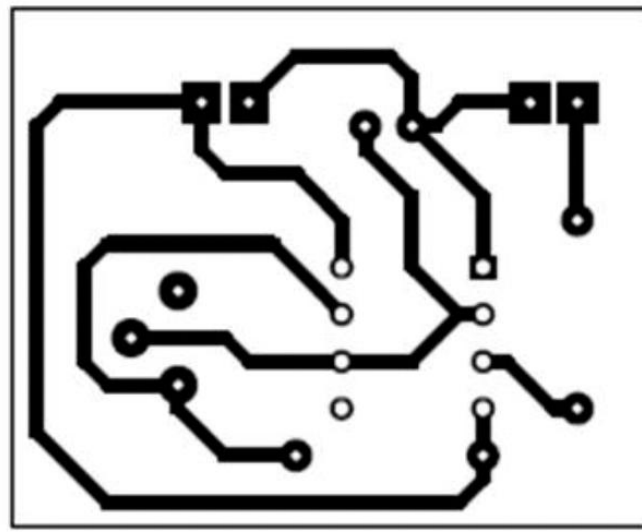
PCB Layout Printing



PCB Layout Printing

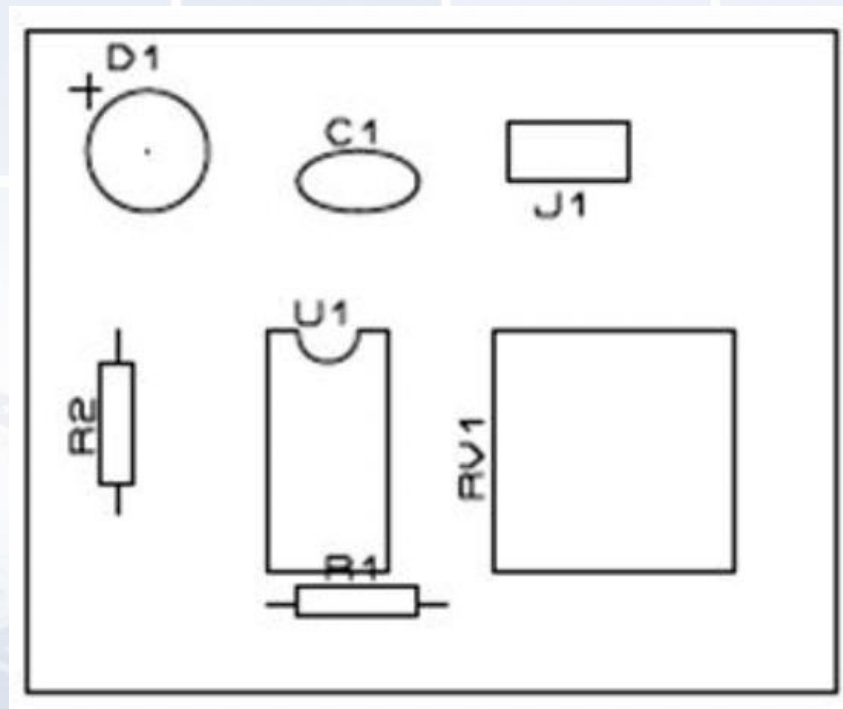
1: Top copper layer: This is only required for dual layered PCBs

2: Bottom copper layer: While printing this layer, only select 'bottom copper' and 'board edge' in 'layer/artwork'.



PCB Layout Printing

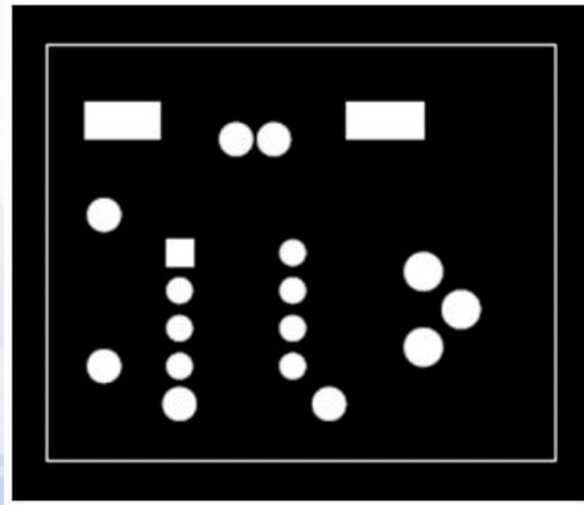
3: Top Silk layer: This is in combination with the bottom copper layer.



PCB Layout Printing

4: Bottom Silk Layer: This is for dual layered PCB.

5: Solder Resist Layer: This is for prevention of short circuits. For this select mode as 'solder resist' and select 'bottom resist' and 'board edge'. Also select reflection as 'mirror' mode.



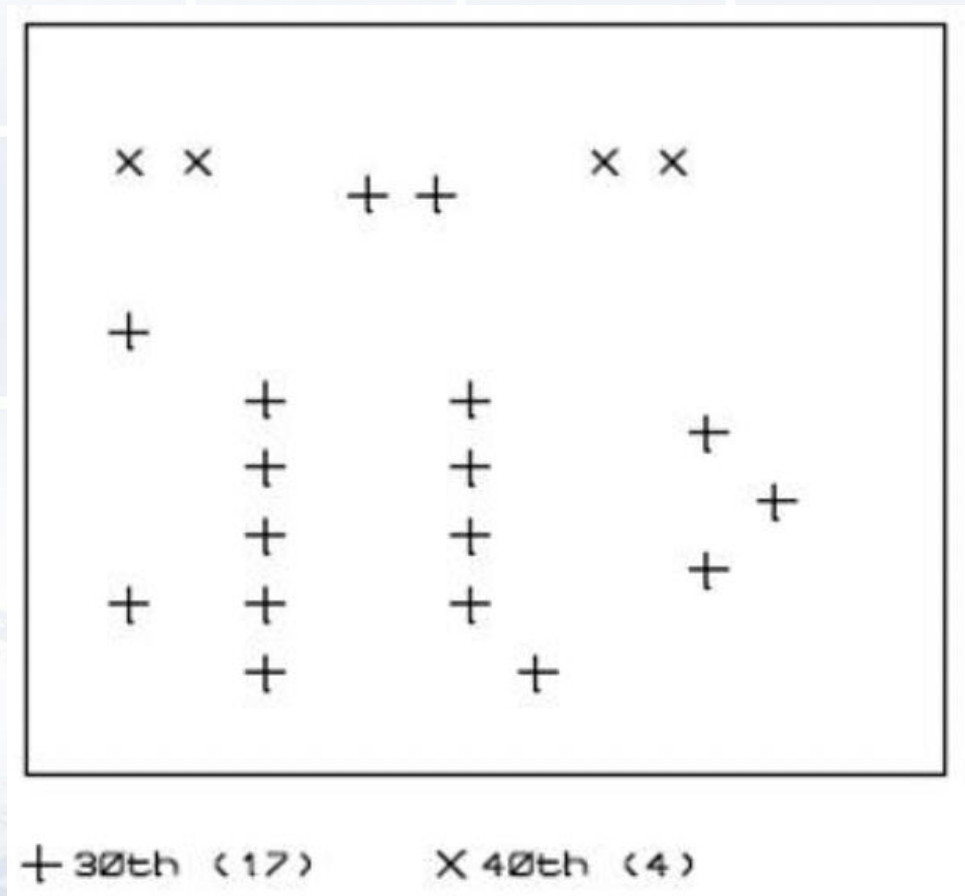
PCB Layout Printing

6: SMT Mode: We do not use SMT (Surface Mount Technology) mode as our circuit does not require SMT module

7: Drill Plot Layer: This layer is used to indicate the drill place and drill hole size. Select 'drill' and 'board edge'. Select 'normal' in Reflection option.



PCB Layout Printing



Tugas Mandiri (teori):

Lakukan pembuatan skema 7-Segment Display menggunakan software simulator

Tugas Mandiri (prakt):

Lakukan Simulasi 7 Segment menggunakan software simulator dan jelaskan hasil simulasinya.

end

