

NAMA : ARI ROMADONA  
NPM : 22012120036  
Prodi : Akuntansi P<sub>2</sub>

MATEMATIKA

13.  $y = x^2 - 3x + 2$

A: 1

B: -3

C: 2

$$D: b^2 - 4ac$$
$$= (-3)^2 - 4(1)(2)$$
$$= 9 - 8$$
$$= 1$$

Koordinat titik puncak

$$\left( \frac{-b}{2a}, \frac{-D}{4a} \right)$$

$$\left( \frac{3}{2(1)}, \frac{-1}{4(1)} \right)$$

$$= 1,5, -0,25$$

$$x_{1,2} = \frac{3 \pm \sqrt{1}}{2}$$

$$x_1 = \frac{3+1}{2} = 2$$

$$x_2 = \frac{3-1}{2} = 1$$

$$x=0 \rightarrow y=2 \rightarrow (0,2)$$

$$x=1 \rightarrow y=1^2 - 3 \cdot 1 + 2$$

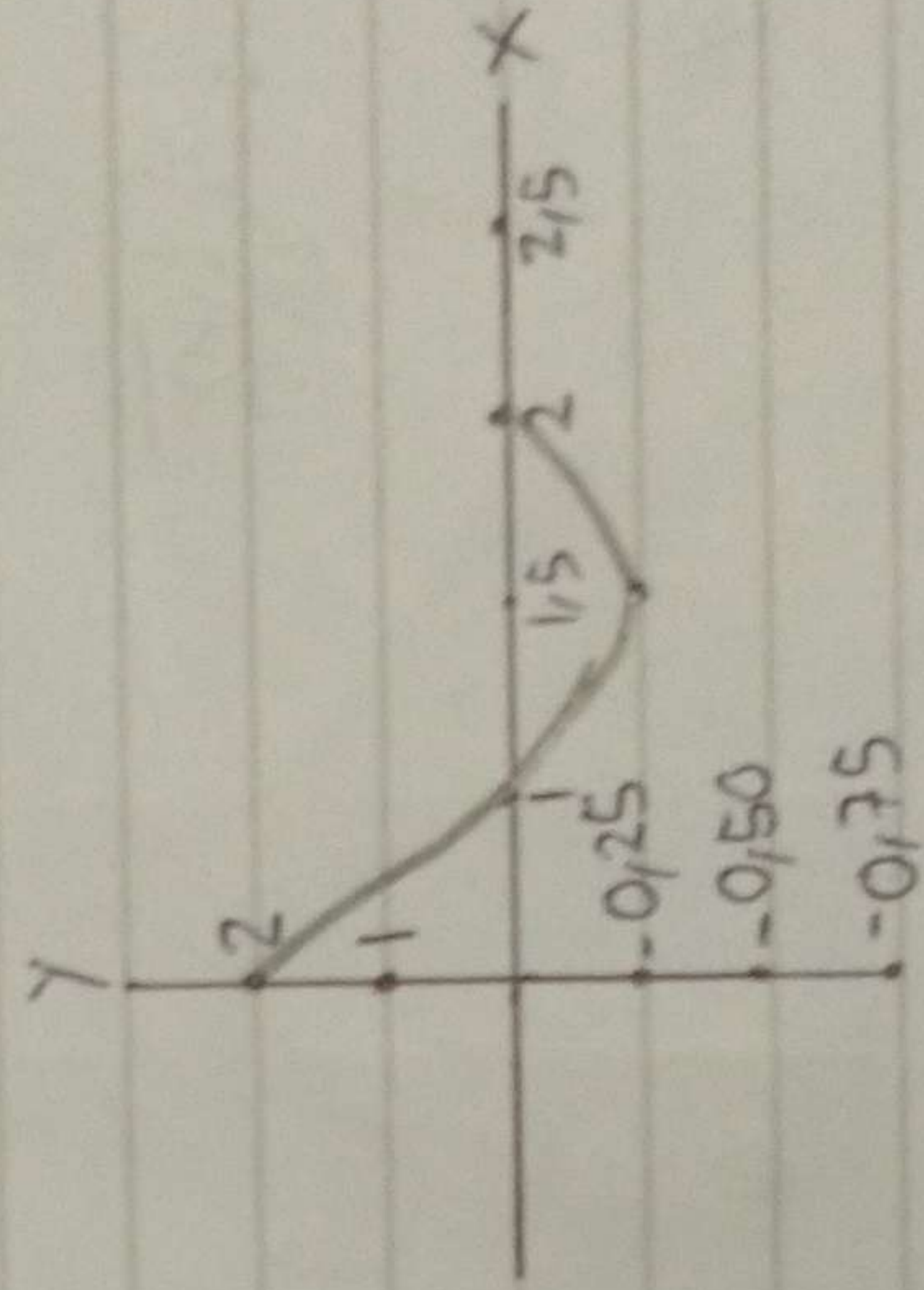
$$= 1 - 3 + 2 = 0 \rightarrow (1,0)$$

$$x=2 \rightarrow y=2^2 - 3 \cdot 2 + 2$$

$$= 4 - 6 + 2 = 0 \rightarrow (2,0)$$

$$x=3 \rightarrow y=3^2 - 3 \cdot 3 + 2$$

$$= 9 - 9 + 2 = 2 \rightarrow (3,2)$$



$$48 \quad x = 96 - 4y - 2y^2$$

$$A: -2$$

$$D: b^2 - 4ac$$

$$B: -4$$

$$= (-4)^2 - 4(-2)(96)$$

$$C: 96$$

$$= 16 + 768$$

$$= 784$$

koordinat titik puncak

$$\left( \frac{-D}{4a}, \frac{-b}{2a} \right)$$

$$\left( \frac{-784}{4(-2)}, \frac{4}{2(-2)} \right)$$

$$\left( \frac{-784}{-8}, \frac{4}{-4} \right)$$

$$= 98, -1$$

$$\text{Titik Potong} = \frac{-b \pm \sqrt{D}}{2a}$$

$$= \frac{4 \pm \sqrt{784}}{-4}$$

$$x_1 = \frac{4 + \sqrt{784}}{-4}$$

$$= \frac{32}{-4} = -8$$

$$x_2 = \frac{4 - 28}{-4}$$

$$= \frac{-24}{-4} = 6$$

$$y = 96 - 4y - 2y^2$$

$$y = 0 \rightarrow x = 96 - 7(0,96)$$

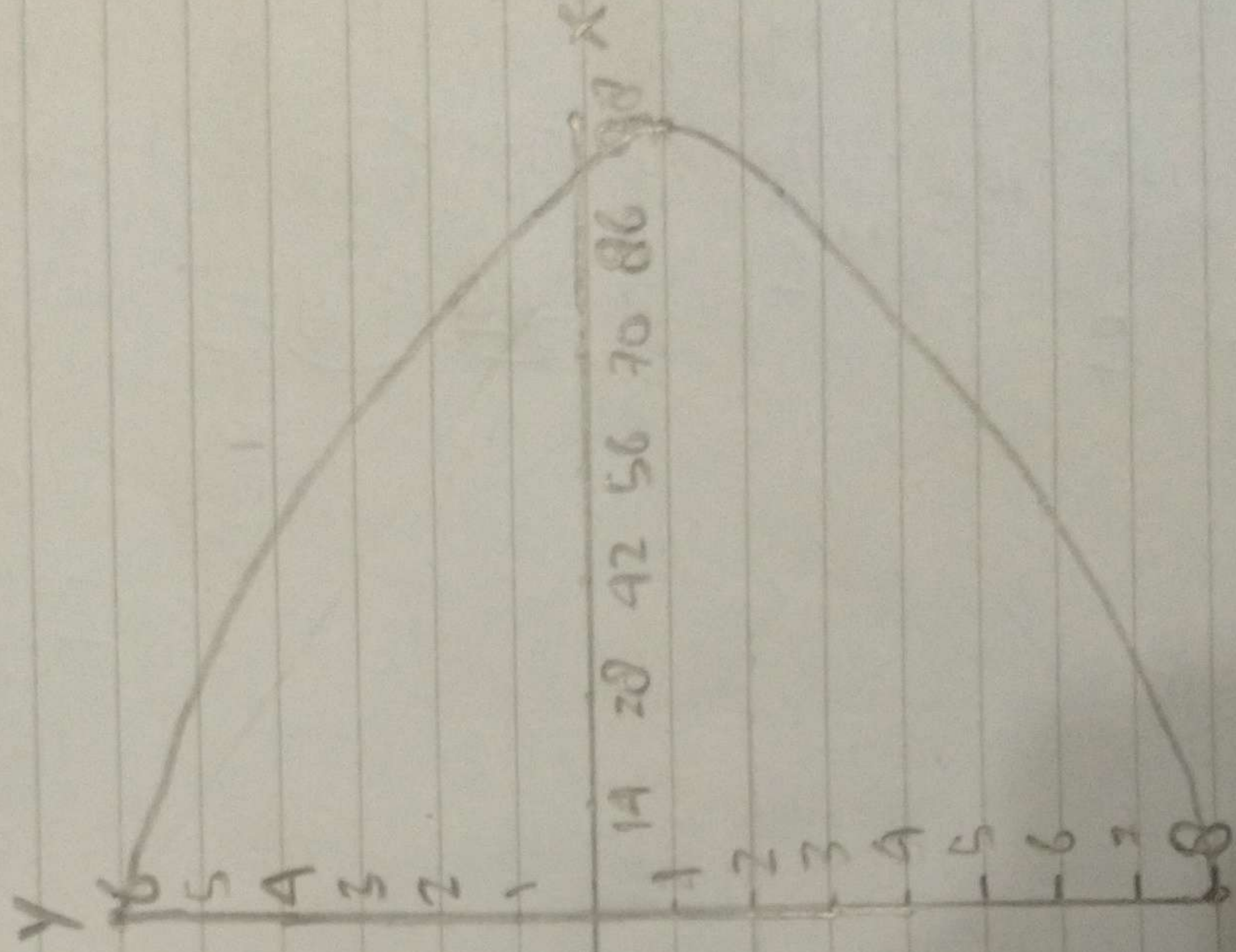
$$y = 6 \rightarrow x = 96 - 4(6) - 2(6)^2$$

$$= 96 - 24 - 72 = 0 \quad (6,0)$$

$$y = -8 \rightarrow x = 96 - 4(-8) - 2(-8)^2$$

$$= 96 + 32 - 2(64)$$

$$= 96 + 32 - 128 = 0 \quad (-8,0)$$



$$69 \quad y = \frac{6}{x+1}$$

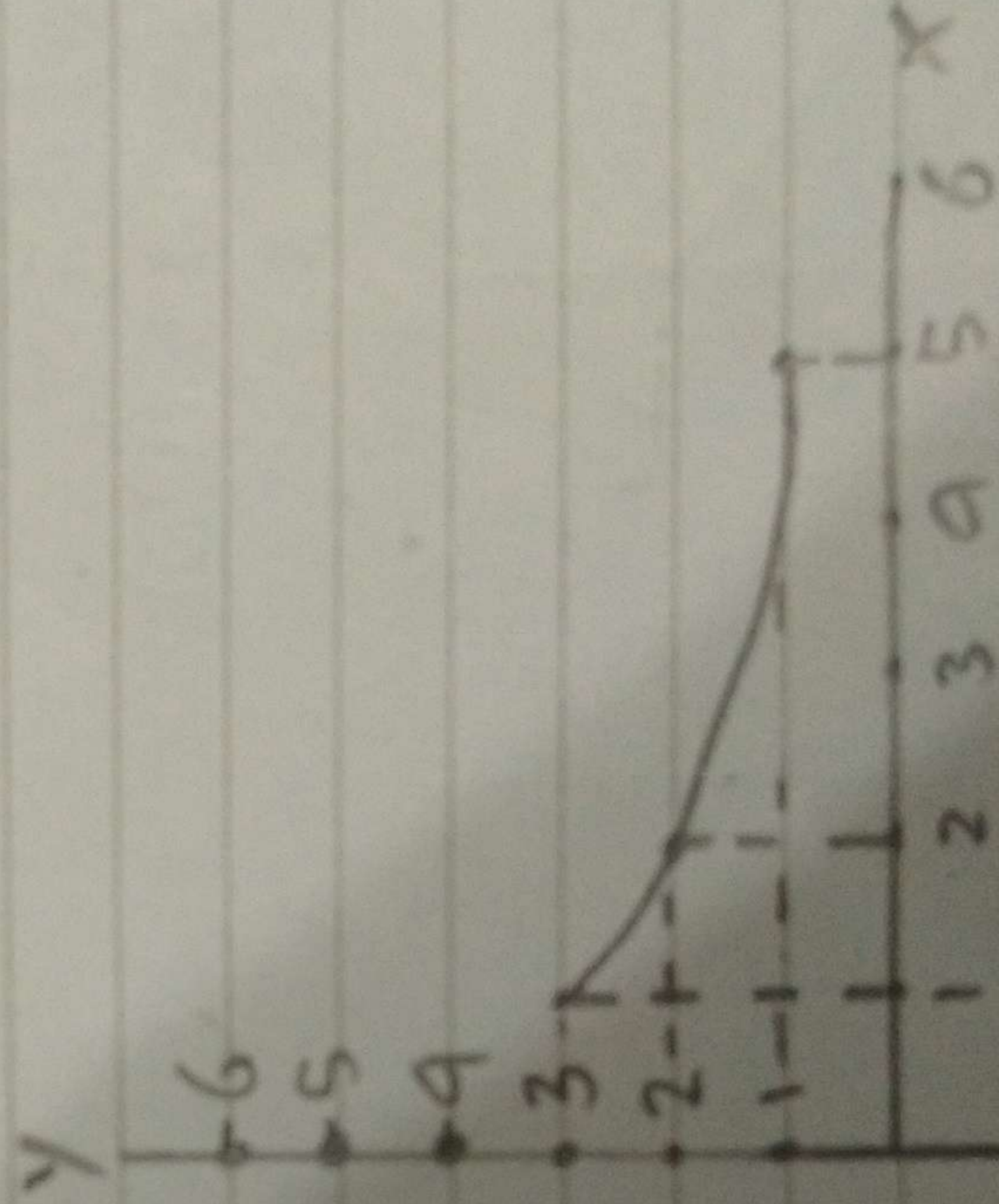
Titik bantu

$$x=0 \rightarrow y = \frac{6}{0+1} = 6 \quad (0,6)$$

$$x=1 \rightarrow y = \frac{6}{1+1} = 3 \quad (1,3)$$

$$x=2 \rightarrow y = \frac{6}{2+1} = 2 \quad (2,2)$$

$$x=5 \rightarrow y = \frac{6}{5+1} = 1 \quad (5,1)$$



$$f_9 = (x-3)(y+6) = 90$$

$$x = h = 3$$

$$y = k = -6$$

Titik Pusat =  $(3, -6)$

Titik bantu

$$x = 0 \rightarrow (0, -3)(y+6) = 90$$

$$-3y - 18 = 90 : 3$$

$$-y - 6 = 30$$

$$-30 - 6 = -36 \quad y = -36 - (-6) \quad 29 = y \quad (0, 29)$$

$$y = 0 \rightarrow (x, -3)(0+6) = 90$$

$$6x - 18 = 90 : 6$$

$$x - 3 = 15$$

$$-15 + 3 = -12 \quad x = 12 \quad (12, 0)$$

$$x = 12$$

